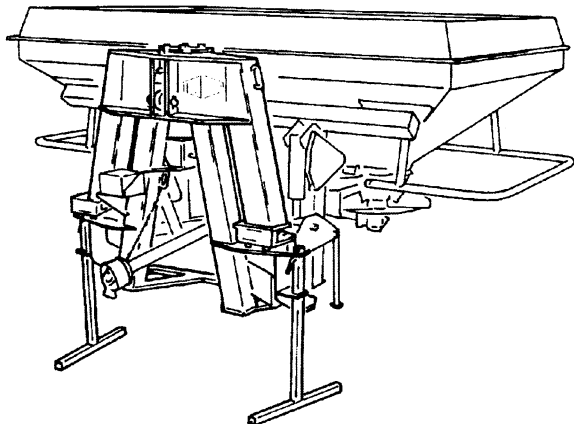
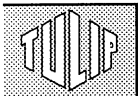


**CALIBRATION OF WEIGHING
ELEMENT**

CENTERMATIC





CALIBRATION OF CENTERMATIC WEIGHING ELEMENT

Calibration of the CENTERMATIC's weighing element is a strict condition for correct weighing.

Calibration needs to be carried out if the weighing element or the software (EPROM) in the CENTERMATIC's control box was replaced. Also, calibration values may slightly decline in the course of time, so that a fresh calibration is called for.

Calibration can be carried out by using a calibration weight (standard) or by calculating the difference in %.

- If you use a standard calibration weight, it should have a minimum weight of 100 kg. We recommend that a standard weight between 1,000 and 2,000 kg be used. This weight should have been established with an accuracy of 0,5 kg on a calibrated weighing device.
- Opt for calibration through the "difference in %" method if practice operations show that the output rate is consistently too high or too low. Such a situation could be established for instance if known fertilizer quantities are spread whilst the CENTRONIC displays different rates.

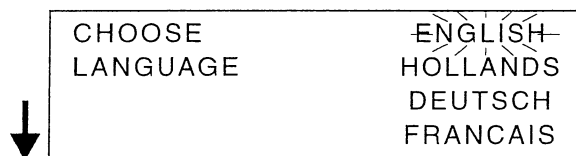
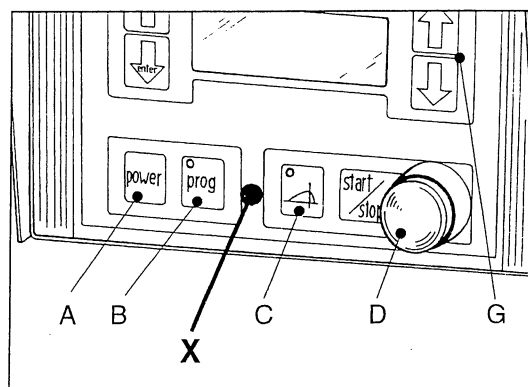
The difference in % is calculated as follows:

$$\text{difference in \%} = \frac{W\text{-CENTRONIC}}{W\text{-effective}} \times 100\%$$

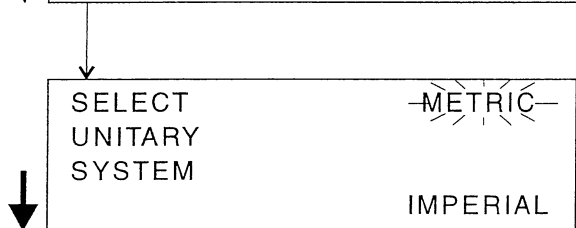
W-CENTRONIC = weight displayed by the CENTRONIC

W-effective = known weight (of, say, a load of fertilizer) weighed on a calibrated weighing device.

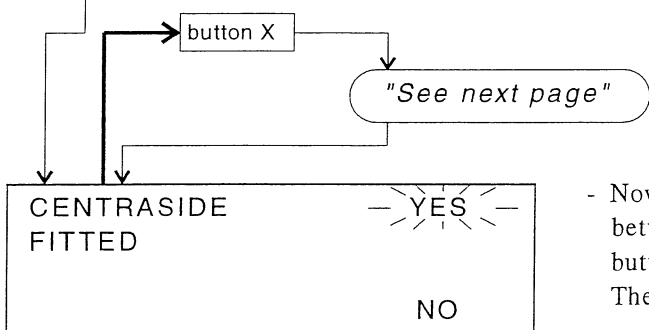
Start the calibration procedure by pressing the "Prog" button and the headland spreading button (B + C) at the same time for approx. 5 seconds until the screen below is displayed:



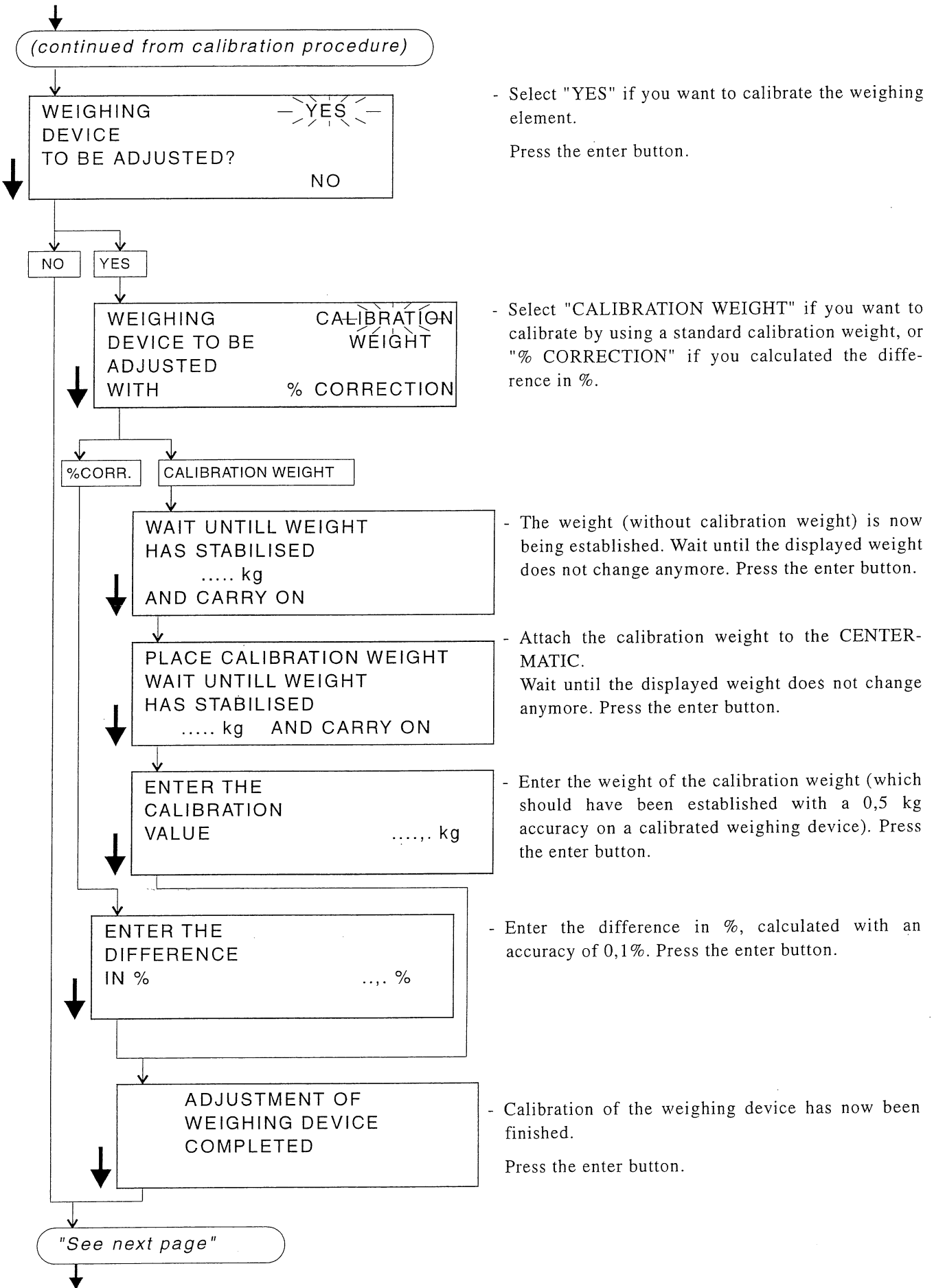
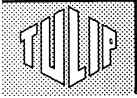
- Select the required language by means of the RH arrow buttons (G). The selected language will blink. Press the enter button.

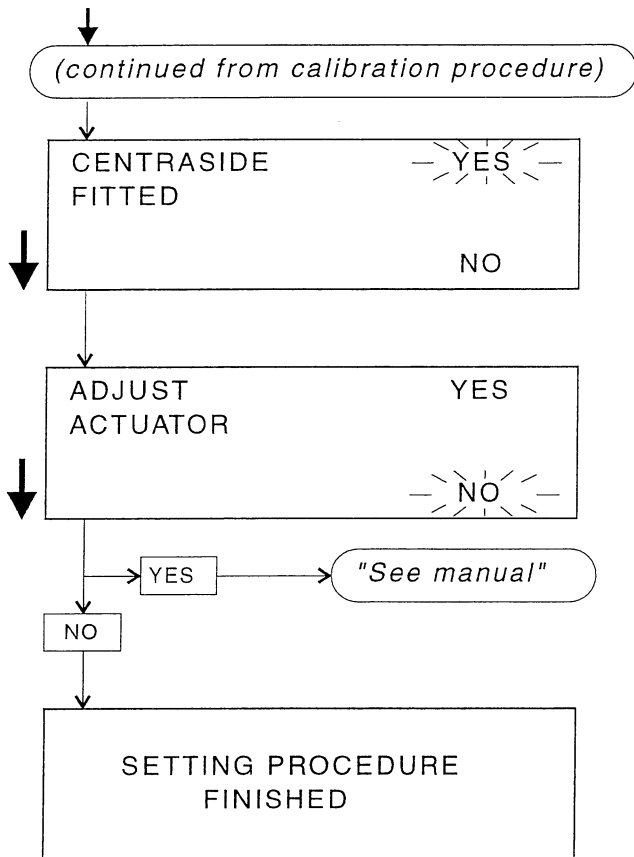
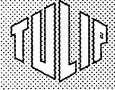


- Select the required unitary system and press the enter button.



- Now press the hidden button X (fig. 1), which is situated between the "Prog" button B and the headland spreading button C. The procedure is described further on the next page.





- Select "YES" if the CENTERLINER is fitted with a CENTRASIDE headland spreading attachment.

- Select "NO".

(If you want to adjust the actuator, select "YES" and proceed to the operator's manual of the CENTRONIC).

The procedure has now been finished. After a few seconds, the CENTRONIC enters the stand-by position of the operation mode.

