

LELY

type nummer
type number
numéro de type
Typnummer

vanaf serienummer
as from serial number
après numéro de série
ab Seriennummer

W

2.3202.0000.1

914 - 0650

W

2.3202.0001.1

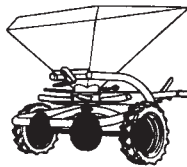
999 - 0501

W

**Inhoud
Contents
Index
Inhalt**

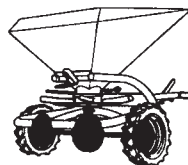
W

**pagina
page
page
Seite**



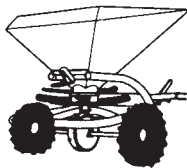
Standaardaandrijving
Standard wheel drive
Entraînement d'origine
Serienmässiger Antrieb

01



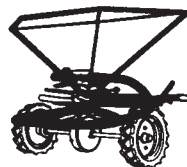
Speciale aandrijving voor zand/zout
Special wheel drive for sand/salt
Entraînement spécial pour sable/sel
Sonderantrieb für Sand/Salz

02



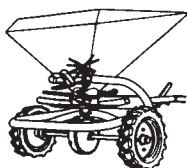
Werpschijf + wielen
Ejector disc + wheels
Disque éjecteur + roues
Wurfscheibe + Räder

03



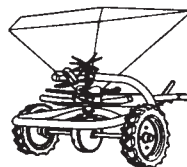
Freem + voorraadbak
Frame + hopper
Châssis + trémie
Rahmen + Behälter

04



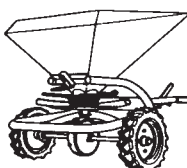
Agitator
Agitator
Agitateur
Rührwerk

05



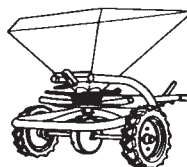
Agitator voor poedervormige kunstmest
Agitator for powdery fertiliser
Agitateur pour des engrais pulvérulants
Rührwerk für pulverige Düngestoffe

05



Snelsluitdoseerinrichtingen
On/off devices
Fermetures rapides
Schnellverschlüsse

06/10

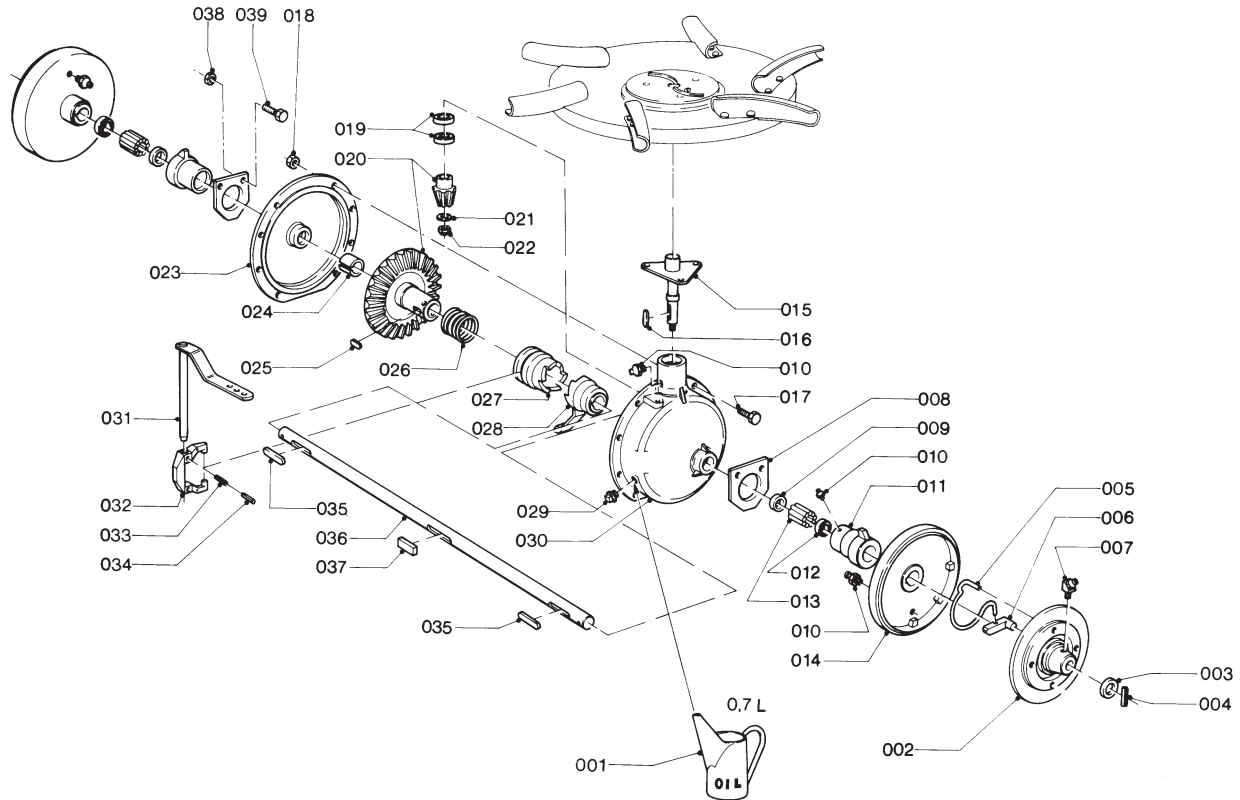
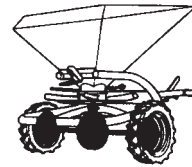


Compost- + zand/zout-dosering
Compost + sand/salt feed system
Système de dosage compost + sable/sel
Kompost- + Sand/Salz-Dosiersystem

11

LELY

	type nummer type number numéro de type Typnummer	vanaf serienummer as from serial number après numéro de serie ab Seriennummer
W	2.3202.0000.1	914 - 0650



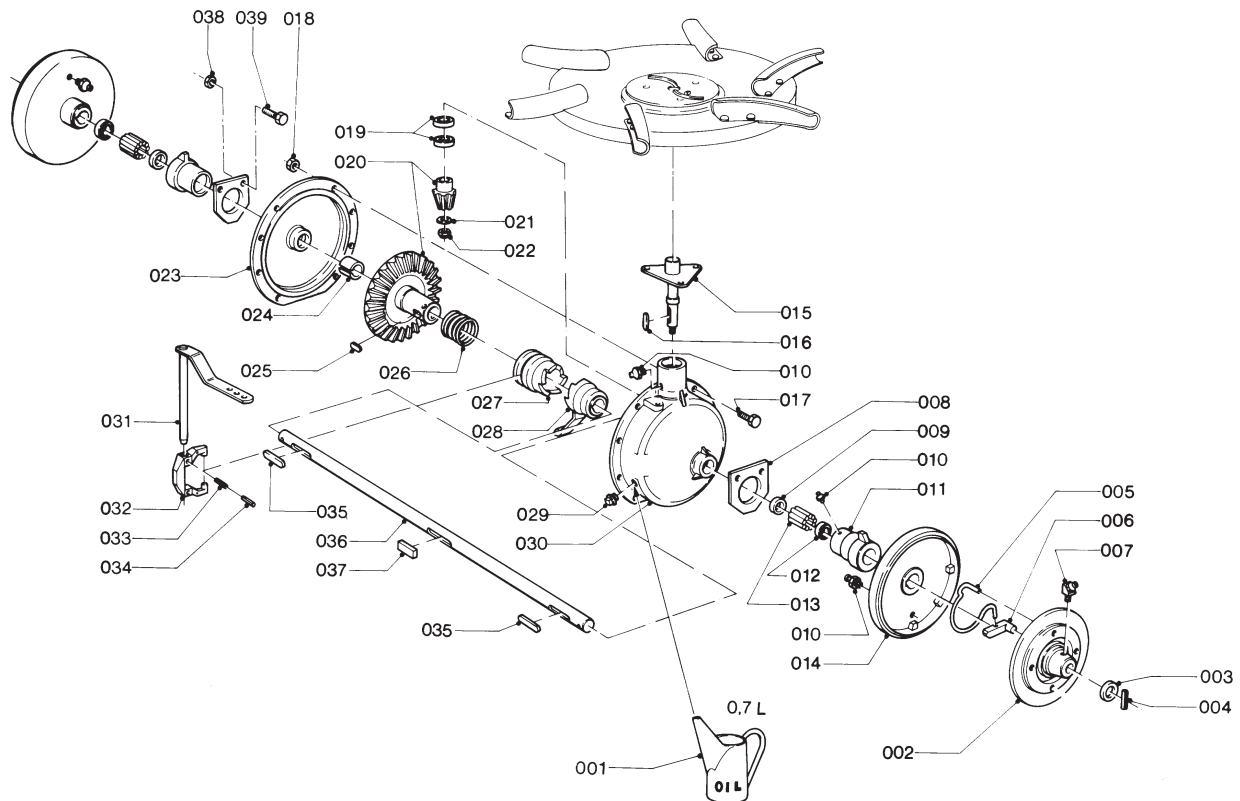
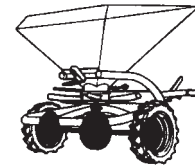
A023-02-01

REF.	ONDERDEELNR. PART NUMBER REFERENCE TEILNUMMER	AANTAL QUANTITY QUANTITE ANZAHL	
001	9.1171.0044.6	(0,7L)	0,7L ESSO GP 80W90
002	2.3202.0092.0	1	[R]
	2.3202.0101.0	1	[L]
003	9.1048.0026*6	2	37 DIN 1441 [—]
004	9.1070.0024.3	2	Ø8x60 DIN 1481
005	2.3202.0093.0	1	[R]
	2.3202.0102.0	1	[L]
006	2.3202.0091.0	1	[R]
	2.3202.0100.0	1	[L]
007	9.1068.0002*4	2	BR 1/8" 45° DIN 71412
008	2.3202.0111.0	2	
009	9.1042.0008.1	2	35x42x04 G [» «]
010	9.1068.0001*3	5	AR 1/8" DIN 71412
011	2.3202.0110.0	1	[R]
	2.3202.0119.0	1	[L]
012	9.1042.0010.3	2	35x47x07 AA [» «]
013	9.1007.0002.2	2	13512 L= 35 mm
014	2.3202.0090.0	2	
015	2.3202.0030.0	1	
016	9.1071.0004.3	1	A6x6x40 DIN 6885
017	9.1113.0124*4	8	M6x25 DIN 933-8.8
018	9.1029.0002.1	8	M6 DIN 934-8
019	9.1001.0084.6	2	6205-Z-C3
020	2.3202.0067.8	1	[T+T]
021	2.3202.0019.0	1	Ø27x13x3,5 [—]

REF.	ONDERDEELNR. PART NUMBER REFERENCE TEILNUMMER	AANTAL QUANTITY QUANTITE ANZAHL	
022	9.1030.0013*4	1	M12 DIN 985-8
023	2.3202.0042.0	1	
024	9.1077.0001.1	1	EG 35/43x20 DIN 1498
025	9.1071.0029.0	1	A14x9x45 DIN 6885
026	2.3202.0080.0	1	
027	2.3202.0081.0	1	
028	2.3202.0082.0	1	
029	9.1131.0004.6	1	R 3/8"
030	2.3202.0041.0	1	
031	2.3202.0050.0	1	(031= 031+032)
032	#	1	
033	9.1070.0017.3	2	Ø6x30 DIN 1481
034	9.1070.0035.0	2	Ø3,5x32 DIN 1481
035	9.1071.0011.3	2	A8x7x40 DIN 6885
036	2.3202.0020.0	1	
037	2.3202.0021.0	1	
038	9.1029.0008*0	4	M12 DIN 934-8
039	9.1113.0049*6	4	M12x25 DIN 933-8.8
-	2.3202.0010.0	-	Standaardaandrijving (1:4,3) Standard wheel drive (1:4,3) Entrainement d'origine (1:4,3) Serienmässiger Antrieb (1:4,3)

LELY

	type nummer type number numéro de type Typnummer	vanaf serienummer as from serial number après numéro de serie ab Seriennummer
W	2.3202.0000.1	990 - 0587



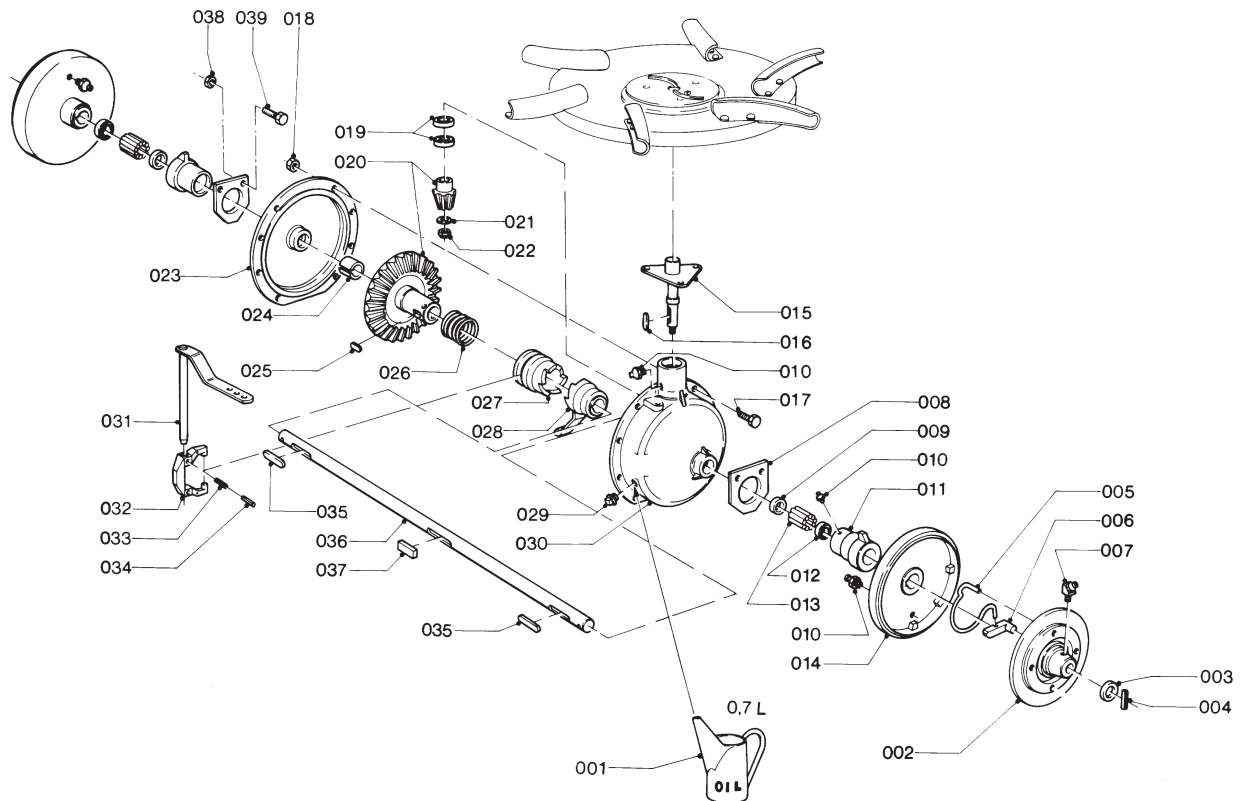
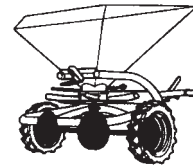
A023-02-01

REF.	ONDERDEELNR. PART NUMBER REFERENCE TEILNUMMER	AANTAL QUANTITY QUANTITE ANZAHL		
001	9.1171.0044.6	(0,7L)	0,7L ESSO GP 80W90	
002	2.3202.0092.0	1	[R]	
	2.3202.0101.0	1	[L]	
003	9.1048.0026*6	2	37 DIN 1441	[]
004	9.1070.0024.3	2	Ø8x60 DIN 1481	
005	2.3202.0093.0	1	[R]	
	2.3202.0102.0	1	[L]	
006	2.3202.0091.0	1	[R]	
	2.3202.0100.0	1	[L]	
007	9.1068.0002*4	2	BR 1/8" 45° DIN 71412	
008	2.3202.0111.0	2		
009	9.1042.0008.1	2	35x42x04 G	[> <]
010	9.1068.0001*3	5	AR 1/8" DIN 71412	
011	2.3202.0109.0	2		
012	9.1042.0078.1	2	35x50x9 DB	[> <]
013	9.1007.0008.1	2	94832 1.3/8"x1.7/8"x2	
014	2.3202.0090.0	2		
015	2.3202.0030.0	1		
016	9.1071.0004.3	1	A6x6x40 DIN 6885	
017	9.1113.0124*4	8	M6x25 DIN 933-8.8	
018	9.1029.0002.1	8	M6 DIN 934-8	
019	9.1001.0084.6	2	6205-Z-C3	
020	2.3202.0067.8	1	[T+T]	
021	2.3202.0019.0	1	Ø27x13x3,5	[]
022	9.1030.0013*4	1	M12 DIN 985-8	

REF.	ONDERDEELNR. PART NUMBER REFERENCE TEILNUMMER	AANTAL QUANTITY QUANTITE ANZAHL		
023	2.3202.0042.0	1		
024	9.1077.0001.1	1	EG 35/43x20 DIN 1498	
025	9.1071.0029.0	1	A14x9x45 DIN 6885	
026	2.3202.0080.0	1		
027	2.3202.0081.0	1		
028	2.3202.0082.0	1		
029	9.1131.0004.6	1	R 3/8"	
030	2.3202.0041.0	1		
031	2.3202.0050.0	1	(031= 031+032)	
032	#	1		
033	9.1070.0017.3	2	Ø6x30 DIN 1481	
034	9.1070.0035.0	2	Ø3,5x32 DIN 1481	
035	9.1071.0011.3	2	A8x7x40 DIN 6885	
036	2.3202.0020.0	1		
037	2.3202.0021.0	1		
038	9.1029.0008*0	4	M12 DIN 934-8	
039	9.1113.0049*6	4	M12x25 DIN 933-8.8	
-	2.3202.0010.0	-	Standaard aandrijving (1:4,3)	
			Standard wheel drive (1:4,3)	
			Entraînement d'origine (1:4,3)	
			Serienmäßiger Antrieb (1:4,3)	

LELY

	type number type number numéro de type Typnummer	vanaf serienummer as from serial number après numéro de serie ab Seriennummer
W	2.3202.0000.1	1000 - 0501



A023-02-01

REF.	ONDERDEELNR. PART NUMBER REFERENCE TEILNUMMER	AANTAL QUANTITY QUANTITE ANZAHL	
------	--	--	--

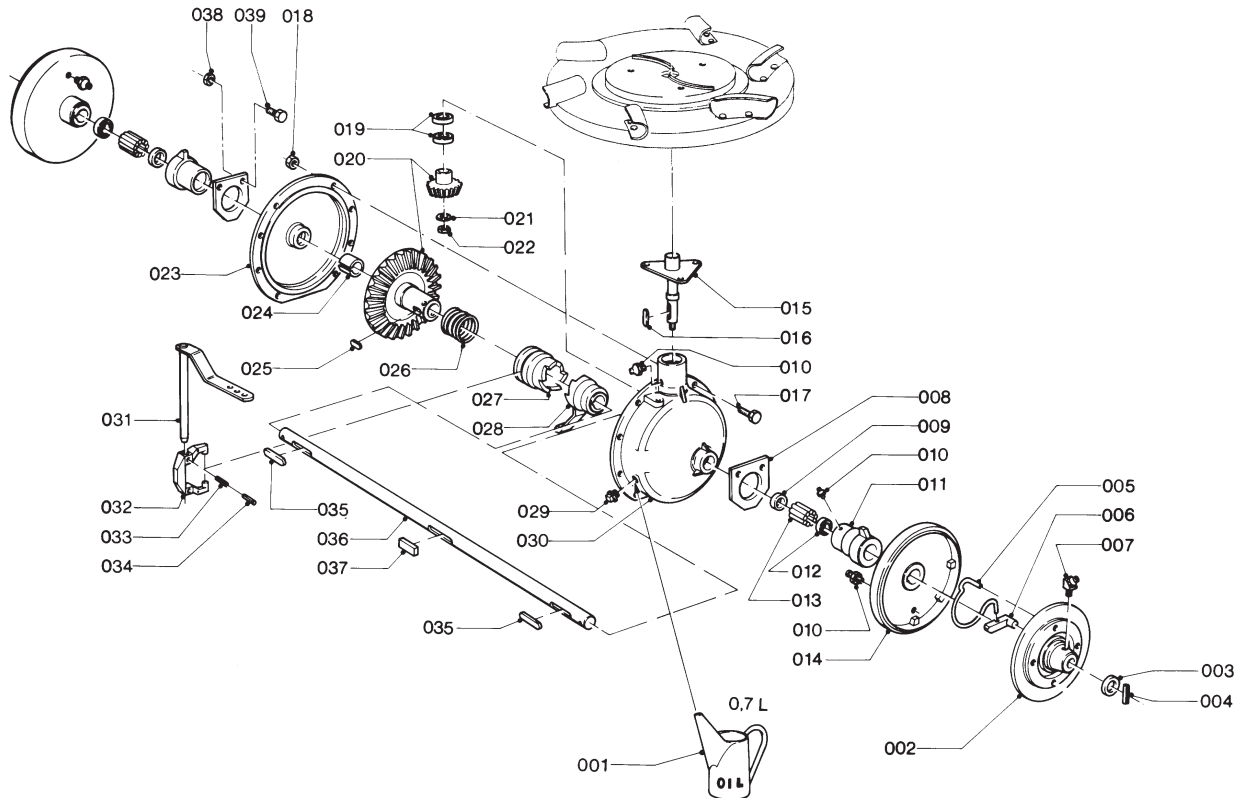
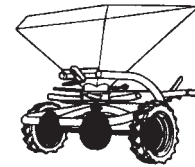
001	9.1171.0044.6	(0,7L)	0,7L ESSO GP 80W90
002	2.3202.0092.0	1	[R]
	2.3202.0101.0	1	[L]
003	9.1048.0034*0	2	A37 DIN 125 []
004	9.1070.0024.3	2	Ø8x60 DIN 1481
005	2.3202.0093.0	1	[R]
	2.3202.0102.0	1	[L]
006	2.3202.0091.0	1	[R]
	2.3202.0100.0	1	[L]
007	9.1068.0002*4	2	BR 1/8" 45° DIN 71412
008	2.3202.0111.0	2	
009	9.1042.0008.1	2	35x42x04 G []
010	9.1068.0001*3	5	AR 1/8" DIN 71412
011	2.3202.0110.0	2	
012	9.1042.0010.3	2	35x47x07 AA []
013	9.1007.0002.2	2	3547-53 ROW/S
014	2.3202.0090.0	2	
015	2.3202.0030.0	1	
016	9.1071.0004.3	1	A6x6x40 DIN 6885
017	9.1113.0124*4	8	M6x25 DIN 933-8.8
018	9.1029.0002.1	8	M6 DIN 934-8
019	9.1001.0084.6	2	6205-Z-C3
020	2.3202.0067.8	1	[T+T]
021	2.3202.0019.0	1	Ø27x13x3,5 []
022	9.1030.0013*4	1	M12 DIN 985-8

REF.	ONDERDEELNR. PART NUMBER REFERENCE TEILNUMMER	AANTAL QUANTITY QUANTITE ANZAHL	
------	--	--	--

023	2.3202.0042.0	1	
024	9.1077.0001.1	1	EG 35/43x20 DIN 1498
025	9.1071.0029.0	1	A14x9x45 DIN 6885
026	2.3202.0080.0	1	
027	2.3202.0081.0	1	
028	2.3202.0082.0	1	
029	9.1131.0004.6	1	R 3/8"
030	2.3202.0041.0	1	
031	2.3202.0050.0	1	(031= 031+032)
032	#	1	
033	9.1070.0017.3	2	Ø6x30 DIN 1481
034	9.1070.0035.0	2	Ø3,5x32 DIN 1481
035	9.1071.0011.3	2	A8x7x40 DIN 6885
036	2.3202.0020.0	1	
037	2.3202.0021.0	1	
038	9.1029.0008*0	4	M12 DIN 934-8
039	9.1113.0049*6	4	M12x25 DIN 933-8.8
-	2.3202.0010.0	-	Standaard aandrijving (1:4,3) Standard wheel drive (1:4,3) Entraînement d'origine (1:4,3) Serienmäßiger Antrieb (1:4,3)

LELY

	type nummer type number numéro de type Typnummer	vanaf serienummer as from serial number après numéro de serie ab Seriennummer
W	2.3202.0000.1	914 - 0650



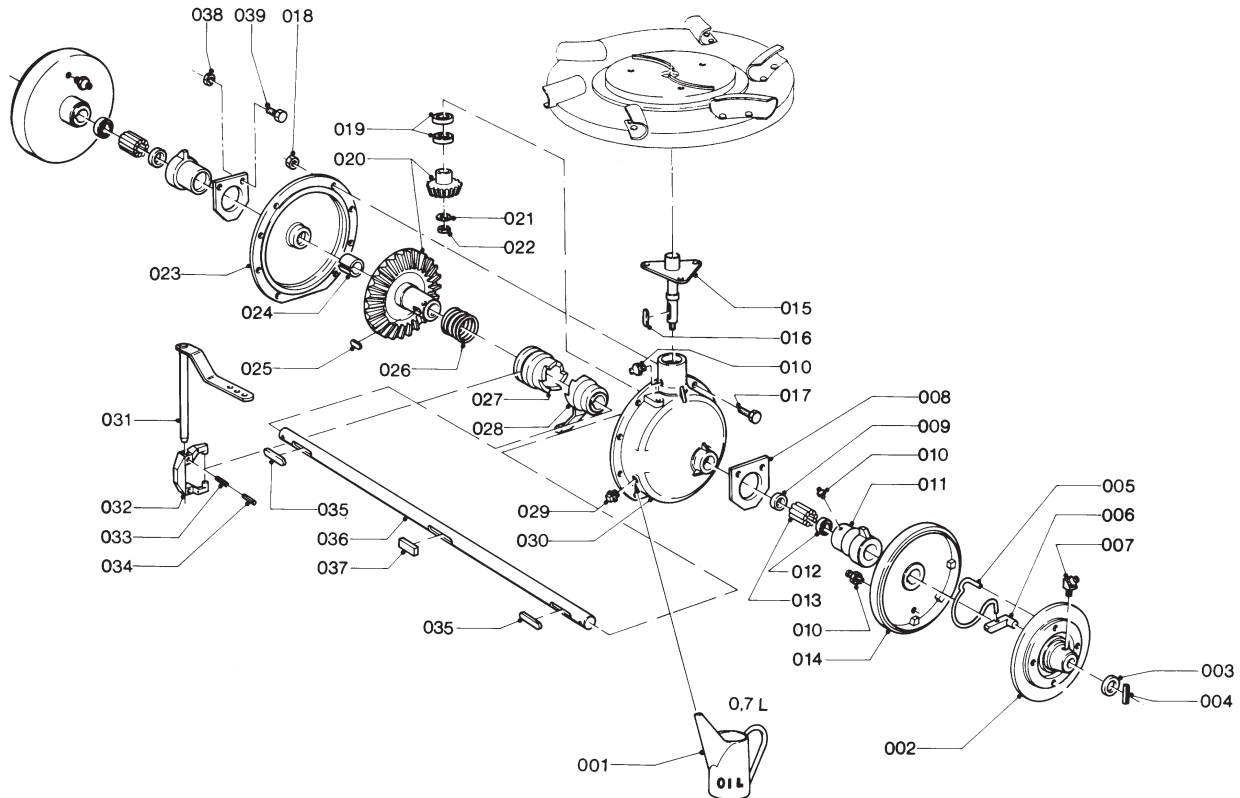
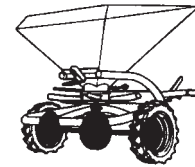
A044-01-10

REF.	ONDERDEELNR. PART NUMBER REFERENCE TEILNUMMER	AANTAL QUANTITY QUANTITE ANZAHL	
001	9.1171.0044.6	(0,7L)	0,7L ESSO GP 80W90
002	2.3202.0092.0	1	[R]
	2.3202.0101.0	1	[L]
003	9.1048.0026*6	2	37 DIN 1441 [—]
004	9.1070.0024.3	2	Ø8x60 DIN 1481
005	2.3202.0093.0	1	[R]
	2.3202.0102.0	1	[L]
006	2.3202.0091.0	1	[R]
	2.3202.0100.0	1	[L]
007	9.1068.0002*4	2	BR 1/8" 45° DIN 71412
008	2.3202.0111.0	2	
009	9.1042.0008.1	2	35x42x04 G [» «]
010	9.1068.0001*3	5	AR 1/8" DIN 71412
011	2.3202.0110.0	1	[R]
	2.3202.0119.0	1	[L]
012	9.1042.0010.3	2	35x47x07 AA [» «]
013	9.1007.0002.2	2	13512 L= 35 mm
014	2.3202.0090.0	2	
015	2.3202.0030.0	1	
016	9.1071.0004.3	1	A6x6x40 DIN 6885
017	9.1113.0124*4	8	M6x25 DIN 933-8.8
018	9.1029.0002.1	8	M6 DIN 934-8
019	9.1001.0084.6	2	6205-Z-C3
021	2.3202.0019.0	1	Ø27x13x3,5 [—]
020	2.3202.0756.0	1	[T+T]

REF.	ONDERDEELNR. PART NUMBER REFERENCE TEILNUMMER	AANTAL QUANTITY QUANTITE ANZAHL	
022	9.1030.0013*4	1	M12 DIN 985-8
023	2.3202.0757.0	1	
024	9.1077.0001.1	1	EG 35/43x20 DIN 1498
025	9.1071.0029.0	1	A14x9x45 DIN 6885
026	2.3202.0080.0	1	
027	2.3202.0081.0	1	
028	2.3202.0759.0	1	
029	9.1131.0004.6	1	R 3/8"
030	2.3202.0041.0	1	
031	2.3202.0050.0	1	(031= 031+032)
032	#	1	
033	9.1070.0017.3	2	Ø6x30 DIN 1481
034	9.1070.0035.0	2	Ø3,5x32 DIN 1481
035	9.1071.0011.3	2	A8x7x40 DIN 6885
036	2.3202.0020.0	1	
037	2.3202.0021.0	1	
038	9.1029.0008*0	4	M12 DIN 934-8
039	9.1113.0049*6	4	M12x25 DIN 933-8.8
-	2.3202.0750.0	-	Speciale aandrijving voor zand/zout (1:2) Special wheel drive for sand/salt (1:2) Entrainement spécial pour sable/sel (1:2) Sonderantrieb für Sand/Salz (1:2)

LELY

	type nummer type number numéro de type Typnummer	vanaf serienummer as from serial number après numéro de serie ab Seriennummer
W	2.3202.0000.1	990 - 0587



A044-01-10

REF.	ONDERDEELNR. PART NUMBER REFERENCE TEILNUMMER	AANTAL QUANTITY QUANTITE ANZAHL	
------	--	--	--

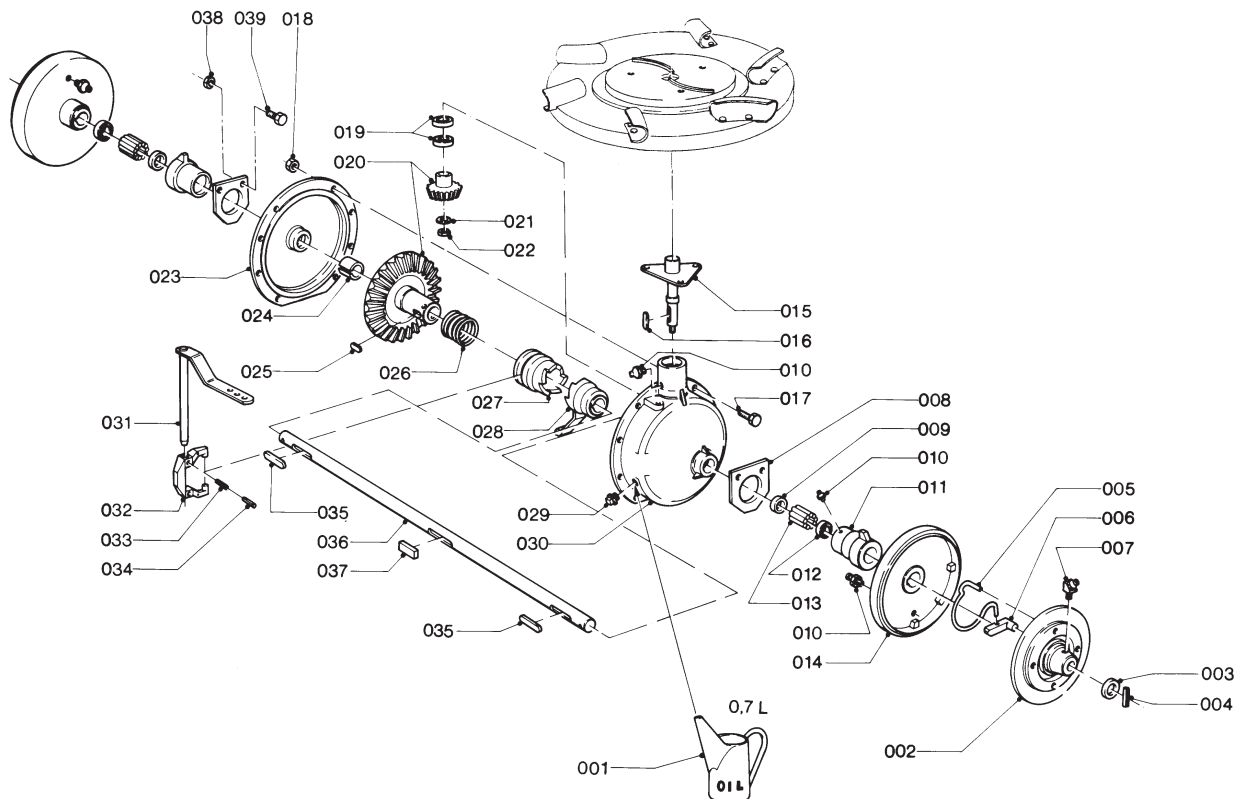
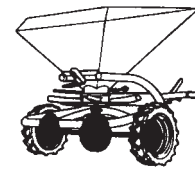
001	9.1171.0044.6	(0,7L)	0,7L ESSO GP 80W90
002	2.3202.0092.0	1	[R]
	2.3202.0101.0	1	[L]
003	9.1048.0026*6	2	37 DIN 1441 [—]
004	9.1070.0024.3	2	Ø8x60 DIN 1481
005	2.3202.0093.0	1	[R]
	2.3202.0102.0	1	[L]
006	2.3202.0091.0	1	[R]
	2.3202.0100.0	1	[L]
007	9.1068.0002*4	2	BR 1/8" 45° DIN 71412
008	2.3202.0111.0	2	
009	9.1042.0008.1	2	35x42x04 G [» «]
010	9.1068.0001*3	5	AR 1/8" DIN 71412
011	2.3202.0109.0	2	
012	9.1042.0078.1	2	35x50x9 DB [» «]
013	9.1007.0008.1	2	94832 1.3/8"x1.7/8"x2
014	2.3202.0090.0	2	
015	2.3202.0030.0	1	
016	9.1071.0004.3	1	A6x6x40 DIN 6885
017	9.1113.0124*4	8	M6x25 DIN 933-8.8
018	9.1029.0002.1	8	M6 DIN 934-8
019	9.1001.0084.6	2	6205-Z-C3
020	2.3202.0756.0	1	[T+T]
021	2.3202.0019.0	1	Ø27x13x3,5 [—]
022	9.1030.0013*4	1	M12 DIN 985-8

REF.	ONDERDEELNR. PART NUMBER REFERENCE TEILNUMMER	AANTAL QUANTITY QUANTITE ANZAHL	
------	--	--	--

023	2.3202.0757.0	1	
024	9.1077.0001.1	1	EG 35/43x20 DIN 1498
025	9.1071.0029.0	1	A14x9x45 DIN 6885
026	2.3202.0080.0	1	
027	2.3202.0081.0	1	
028	2.3202.0759.0	1	
029	9.1131.0004.6	1	R 3/8"
030	2.3202.0041.0	1	
031	2.3202.0050.0	1	(031= 031+032)
032	#	1	
033	9.1070.0017.3	2	Ø6x30 DIN 1481
034	9.1070.0035.0	2	Ø3,5x32 DIN 1481
035	9.1071.0011.3	2	A8x7x40 DIN 6885
036	2.3202.0020.0	1	
037	2.3202.0021.0	1	
038	9.1029.0008*0	4	M12 DIN 934-8
039	9.1113.0049*6	4	M12x25 DIN 933-8.8
-	2.3202.0750.0	-	Speciale aandrijving voor zand/zout (1:2) Special wheel drive for sand/salt (1:2) Entrainement spécial pour sable/sel (1:2) Sonderantrieb für Sand/Salz (1:2)

LELY

	type number type number numéro de type Typnummer	vanaf serienummer as from serial number après numéro de serie ab Seriennummer
W	2.3202.0001.1	999 - 0501



A044-01-10

REF.	ONDERDEELNR. PART NUMBER REFERENCE TEILNUMMER	AANTAL QUANTITY QUANTITE ANZAHL	
------	--	--	--

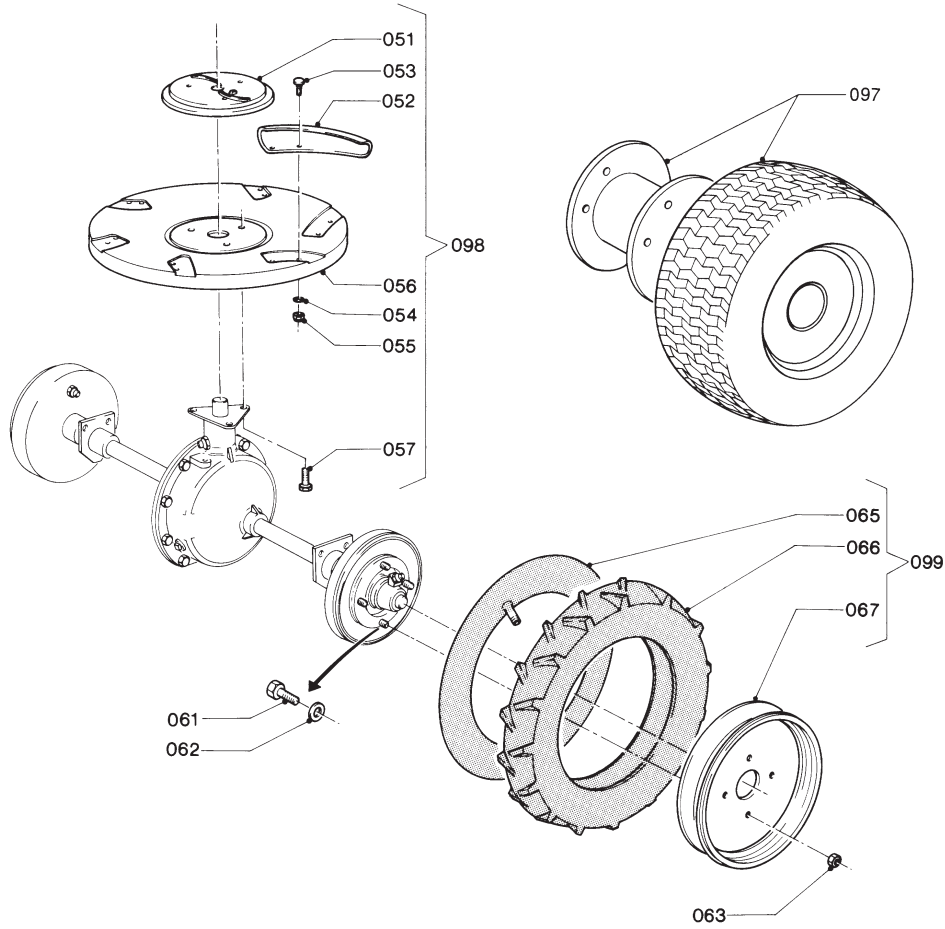
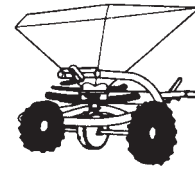
001	9.1171.0044.6	(0,7L)	0,7L ESSO GP 80W90
002	2.3202.0092.0	1	[R]
	2.3202.0101.0	1	[L]
003	9.1048.0034*0	2	A37 DIN 125 [—]
004	9.1070.0024.3	2	Ø8x60 DIN 1481
005	2.3202.0093.0	1	[R]
	2.3202.0102.0	1	[L]
006	2.3202.0091.0	1	[R]
	2.3202.0100.0	1	[L]
007	9.1068.0002*4	2	BR 1/8" 45° DIN 71412
008	2.3202.0111.0	2	
009	9.1042.0008.1	2	35x42x04 G [» «]
010	9.1068.0001*3	5	AR 1/8" DIN 71412
011	2.3202.0110.0	2	
012	9.1042.0010.3	2	35x47x07 AA [» «]
013	9.1007.0002.2	2	3547-53 ROW/S
014	2.3202.0090.0	2	
015	2.3202.0030.0	1	
016	9.1071.0004.3	1	A6x6x40 DIN 6885
017	9.1113.0124*4	8	M6x25 DIN 933-8.8
018	9.1029.0002.1	8	M6 DIN 934-8
019	9.1001.0084.6	2	6205-Z-C3
020	2.3202.0756.0	1	[T+T]
021	2.3202.0019.0	1	Ø27x13x3,5 [—]
022	9.1030.0013*4	1	M12 DIN 985-8

REF.	ONDERDEELNR. PART NUMBER REFERENCE TEILNUMMER	AANTAL QUANTITY QUANTITE ANZAHL	
------	--	--	--

023	2.3202.0757.0	1	
024	9.1077.0001.1	1	EG 35/43x20 DIN 1498
025	9.1071.0029.0	1	A14x9x45 DIN 6885
026	2.3202.0080.0	1	
027	2.3202.0081.0	1	
028	2.3202.0759.0	1	
029	9.1131.0004.6	1	R 3/8"
030	2.3202.0041.0	1	
031	2.3202.0050.0	1	(031= 031+032)
032	#	1	
033	9.1070.0017.3	2	Ø6x30 DIN 1481
034	9.1070.0035.0	2	Ø3,5x32 DIN 1481
035	9.1071.0011.3	2	A8x7x40 DIN 6885
036	2.3202.0020.0	1	
037	2.3202.0021.0	1	
038	9.1029.0008*0	4	M12 DIN 934-8
039	9.1113.0049*6	4	M12x25 DIN 933-8.8
-	2.3202.0750.0	-	Speciale aandrijving voor zand/zout (1:2) Special wheel drive for sand/salt (1:2) Entrainement spécial pour sable/sel (1:2) Sonderantrieb für Sand/Salz (1:2)

LELY

	type number type number numéro de type Typnummer	vanaf serienummer as from serial number après numéro de serie ab Seriennummer
W	2.3202.0000.1	914 - 0650
W	2.3202.0001.1	999 - 0501



A043-02-00

REF.	ONDERDEELNR. PART NUMBER REFERENCE TEILNUMMER	AANTAL QUANTITY QUANTITE ANZAHL	
------	--	--	--

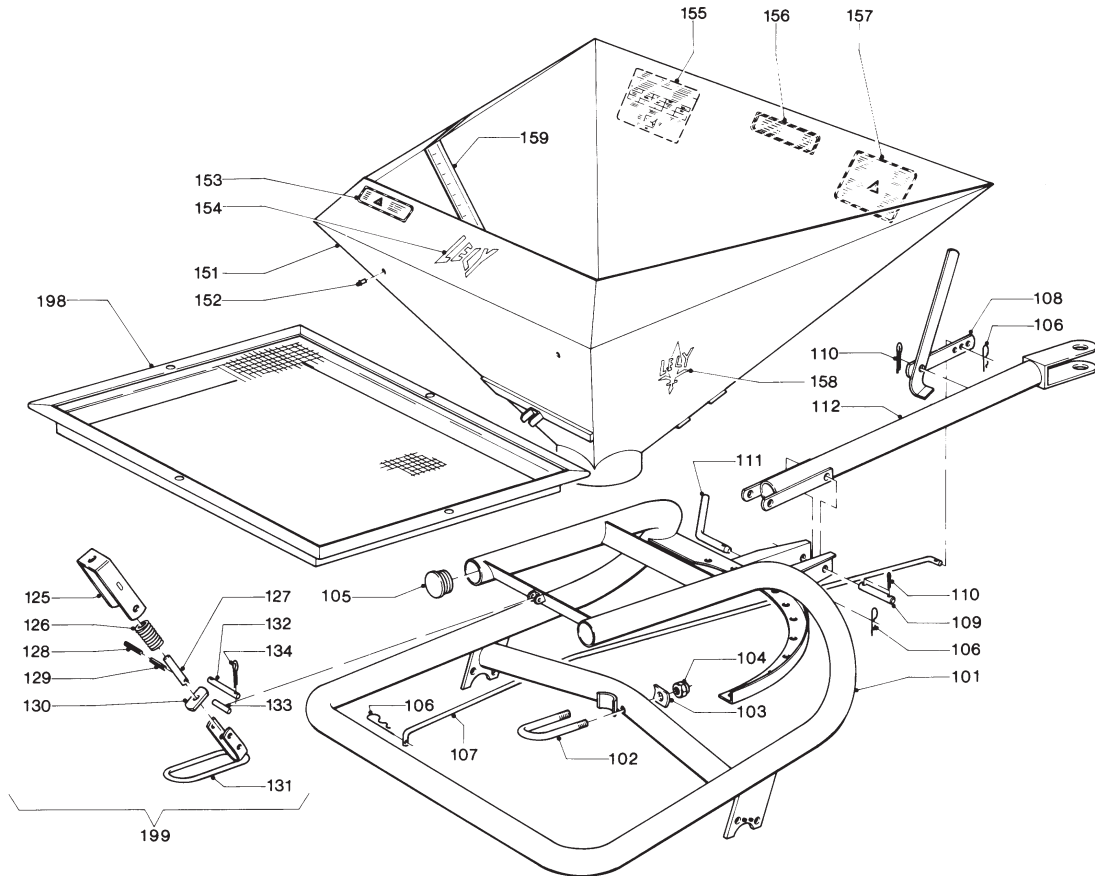
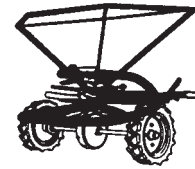
051	2.3205.0208.0	1	
052	2.3205.0209.0	6	
053	9.1058.0036*6	12	M8x16 DIN 603
054	9.1051.0007.5	12	A8,2 DIN 6798 [#####]
055	9.1030.0020.4	12	M8 DIN 985 A2-2
056	2.3205.0207.0	1	
057	9.1113.0265*5	3	M12x20 DIN 933-8.8
061	9.1113.0122*2	8	M16x40 DIN 933-8.8
062	9.1048.0015*2	8	A17 DIN 125 [—]
063	9.1029.0013*5	8	M16 DIN 934-8
065	9.1111.0001.2	1+1	4.00x12 BI
066	9.1110.0001.3	1+1	4.00x12 TRACTOR
067	9.1102.0001.4	1+1	3.50Bx12

REF.	ONDERDEELNR. PART NUMBER REFERENCE TEILNUMMER	AANTAL QUANTITY QUANTITE ANZAHL	
------	--	--	--

097	9.1175.0028.0	1	[R]+[L] 18x9,50-8 Ø45 b= 22,5
098	2.3205.0207.2	1	= REF. 051-057 Werpschijf (compleet) Ejector disc (complete) Disque éjecteur (complet) Wurfscheibe (komplett)
099	9.1175.0013.6	1	= REF. 065-067 [R] Band+velg [R] Tyre+rims [R] Pneu+jante [R] Reifen+Felge
	9.1175.0002.2	1	= REF. 065-067 [L][x] Band+velg [L][x] Tyre+rims [L][x] Pneu+jante [L][x] Reifen+Felge

LELY

	type number type number numéro de type Typnummer	vanaf serienummer as from serial number après numéro de série ab Seriennummer
W	2.3202.0000.1	914 - 0650
W	2.3202.0001.1	999 - 0501



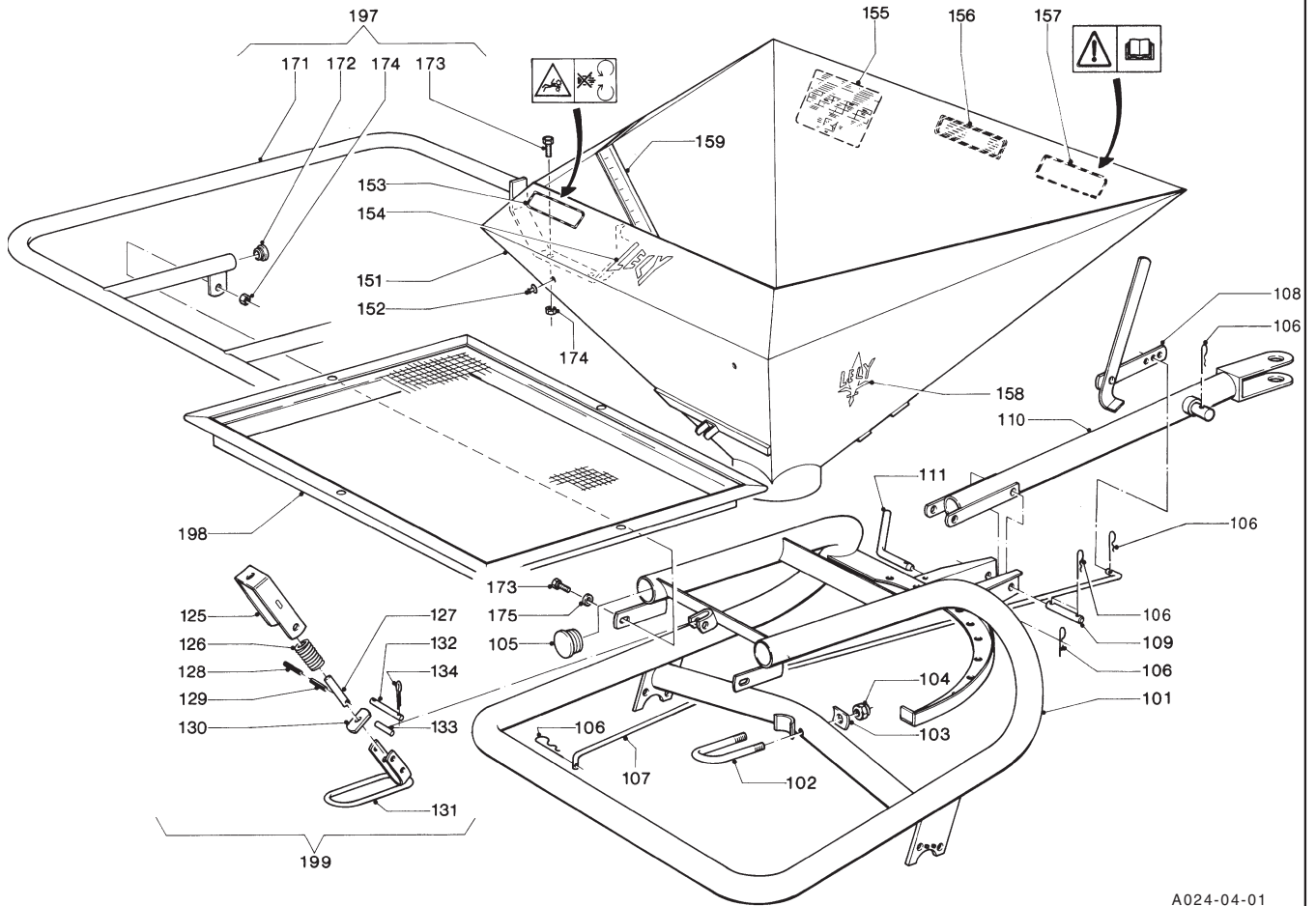
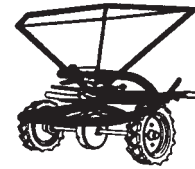
A024-02-00

REF.	ONDERDEELNR. PART NUMBER REFERENCE TEILNUMMER	AANTAL QUANTITY QUANTITE ANZAHL	
101	2.3202.0150.0	1	
102	2.3202.0254.0	1	
103	2.3202.0252.0	2	
104	9.1030.0013*4	2	M12 DIN 985-8
105	2.3201.0200.0	2	
106	9.1124.0003*5	3	Ø4
107	2.3202.0253.0	1	
108	2.3202.0240.0	1	L= 340 mm
	2.3202.0220.0	(1)	L= 440 mm
109	2.3202.0250.0	1	
110	9.1072.0004.2	3	4x30 DIN 94
111	2.3202.0251.0	1	
112	2.3202.0200.0	1	
125	2.3205.0018.0	1	
126	2.3205.0014.0	1	
127	2.3205.0013.0	1	
128	9.1070.0015.1	1	Ø5x60 DIN 1481
129	9.1070.0024.3	1	Ø8x60 DIN 1481
130	2.3205.0015.0	1	
131	2.3205.0011.0	1	
132	2.3205.0017.0	1	
133	2.3205.0016.0	1	
134	9.1072.0004.2	2	4x30 DIN 94

REF.	ONDERDEELNR. PART NUMBER REFERENCE TEILNUMMER	AANTAL QUANTITY QUANTITE ANZAHL	
151	2.3201.0120.0	1	
152	9.1105.0006.6	2	
153	9.1170.0052.1	1	"LET OP DRAAIENDE DELEN"
154	9.1170.0003.1	1	"LELY"
155	9.1170.0081.2	1	"GEBRUIKSAANW. W-STROOIER"
156	9.1170.0069.4	1	"WERK VEILIG ZIE INSTRUKTIE"
157	9.1170.0124.3	1	"NEEM VEILIGHEID IN ACHT"
158	9.1170.0051.0	2	"LELY"
159	9.1170.0149.0	1	"W&H 300 Ltr."
198	2.3201.2000.0	(1)	W & H & L1250 Zeef Screen Tamis Sieb
199	2.3205.0010.0	1	= REF. 125-134 Bakvergrendeling Hopper latch Verrouillage-trémie Behälterverriegelung

LELY

	type number type number numéro de type Typnummer	vanaf serienummer as from serial number après numéro de serie ab Seriennummer
W	2.3202.0000.1	1007 - 0769
W	2.3202.0001.1	1007 - 0505



A024-04-01

REF.	ONDERDEELNR. PART NUMBER REFERENCE TEILNUMMER	AANTAL QUANTITY QUANTITE ANZAHL	
------	--	--	--

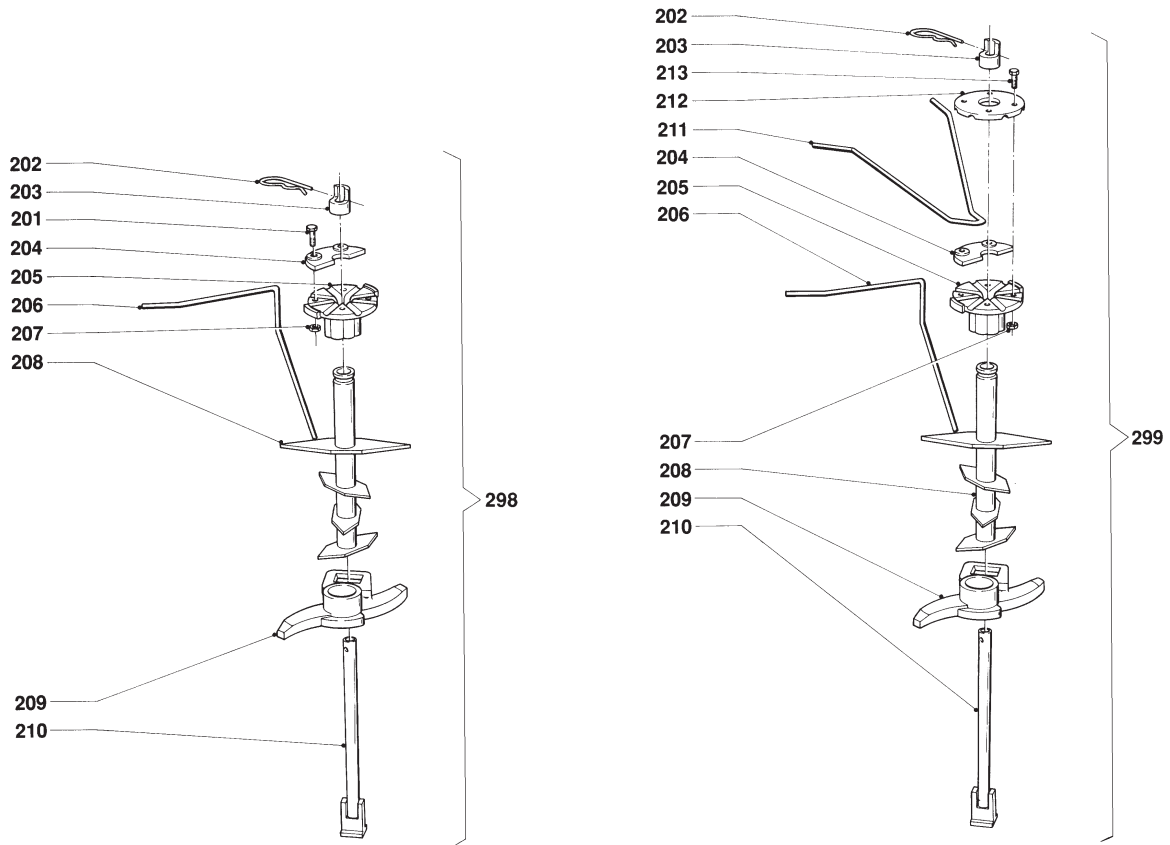
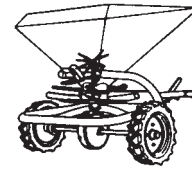
101	2.3202.0150.0	1	
102	2.3202.0254.0	1	
103	2.3202.0252.0	2	
104	9.1030.0013*4	2	M12 DIN 985-8
105	2.3201.0200.0	2	
106	9.1124.0003*5	6	Ø4
107	2.3202.0253.0	1	
108	2.3202.0240.0	1	L= 340 mm
	2.3202.0220.0	(1)	L= 440 mm
109	2.3202.0250.0	1	
110	2.3202.0200.0	1	
111	2.3202.0251.0	1	
125	2.3205.0018.0	1	
126	2.3205.0014.0	1	
127	2.3205.0013.0	1	
128	9.1070.0015.1	1	Ø5x60 DIN 1481
129	9.1070.0024.3	1	Ø8x60 DIN 1481
130	2.3205.0015.0	1	
131	2.3205.0011.0	1	
132	2.3205.0017.0	1	
133	2.3205.0016.0	1	
134	9.1072.0004.2	2	4x30 DIN 94

REF.	ONDERDEELNR. PART NUMBER REFERENCE TEILNUMMER	AANTAL QUANTITY QUANTITE ANZAHL	
------	--	--	--

151	2.3201.0120.0	1	
152	9.1105.0006.6	2	
153	9.1170.0407.6	1	
154	9.1170.0003.1	1	"LELY"
155	9.1170.0081.2	1	"INSTR. W"
156	9.1170.0069.4	1	"WERK VEILIG...ZIE INSTR."
157	9.1170.0408.0	1	
158	9.1170.0051.0	2	"LELY"
159	9.1170.0149.0	1	"300 L" W & H
171	2.3202.0130.0	1	
172	9.1108.0085.6	2	Ø32
173	9.1113.0187*4	4	M10x30 DIN 933-8.8
174	9.1030.0022.6	4	M10 DIN 985-8
175	9.1048.0059*4	2	A10,5 DIN 125 [—]
197	2.3202.0120.0	1	= REF. 171-175
198	2.3201.2000.0	1	W & H & L1250 Zeef / Screen / Tamis / Sieb
199	2.3205.0010.0	1	= REF. 125-134 Bakvergrendeling Hopper latch Verrouillage-trémie Behälterverriegelung

LELY

	type nummer type number numéro de type Typnummer	vanaf serienummer as from serial number après numéro de serie ab Seriennummer
W	2.3202.0000.1	914 - 0650
W	2.3202.0001.1	999 - 0501



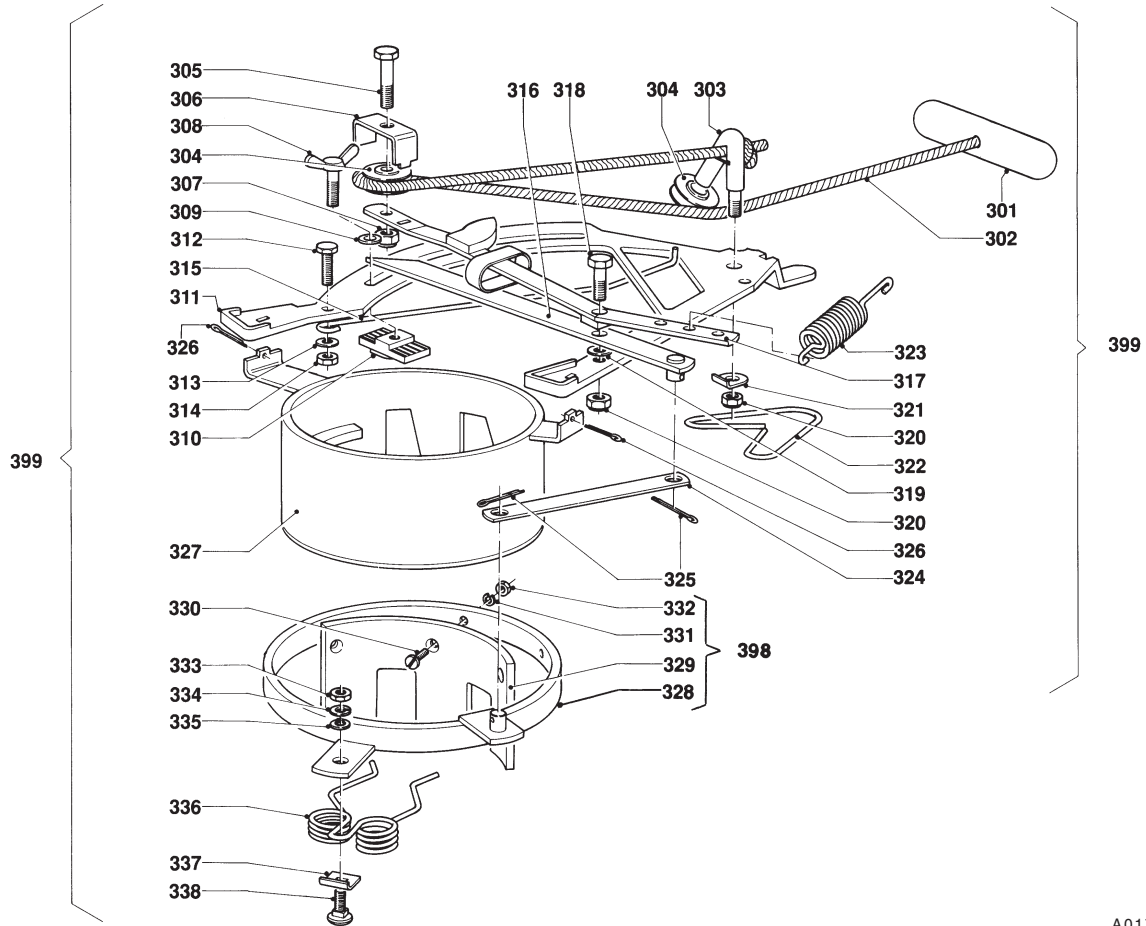
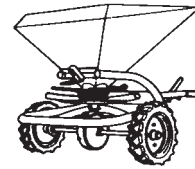
A015-02-00

REF.	ONDERDEELNR. PART NUMBER REFERENCE TEILNUMMER	AANTAL QUANTITY QUANTITE ANZAHL	
201	9.1113.0124*4	4	M6x25 DIN 933-8.8
202	9.1124.0001*3	1	Ø5
203	2.3201.0468.0	1	
204	2.3201.0490.0	2	
205	2.3201.0491.0	1	
206	2.3201.0492.0	8	
207	9.1029.0002*1	4	M6 DIN 934-8
208	2.3201.0480.0	1	
209	2.3201.0469.0	1	
210	2.3201.0470.0	1	
298	2.3201.0460.0	1	= REF. 201-210 Agitator Agitator Agitateur Rührwerk

REF.	ONDERDEELNR. PART NUMBER REFERENCE TEILNUMMER	AANTAL QUANTITY QUANTITE ANZAHL	
202	9.1124.0001*3	1	Ø5
203	2.3201.0468.0	1	
204	2.3201.0490.0	2	
205	2.3201.0491.0	1	
206	2.3201.0492.0	8	
207	9.1029.0002*1	4	M6 DIN 934-8
208	2.3201.0480.0	1	
209	2.3201.0469.0	1	
210	2.3201.0470.0	1	
211	2.3201.2138.0	4	
212	2.3201.2139.0	1	
213	9.1113.0007*6	4	M6x35 DIN 931-8.8
299	2.3201.2130.0	1	= REF. 202-213 Agitator voor poedervormige kunstmest Agitator for powdery fertilizer Agitateur pour des engrais pulvérulants Rührwerk für pulverige Düngerstoffe

LELY

	type nummer type number numéro de type Typnummer	vanaf serienummer as from serial number après numéro de série ab Seriennummer
W	2.3202.0000.1	914 - 0650
W	2.3202.0001.1	999 - 0501



A017-03-01

REF.	ONDERDEELNR. PART NUMBER REFERENCE TEILNUMMER	AANTAL QUANTITY QUANTITE ANZAHL
------	--	--

301	2.3201.0328.0	1
302	1.1655.0658.0	1
303	2.3201.0380.0	1
304	2.3201.0326.0	2
305	9.1113.0054*4	1
306	2.3201.0341.0	1
307	9.1030.0013*4	1
308	9.1062.0005*6	1
309	9.1048.0009*3	1
310	2.3201.0324.0	1
311	2.3201.0320.0	1
312	9.1113.0014*6	1
313	9.1048.0004*5	1
314	9.1029.0004*3	1
315	2.3201.0323.0	1
316	2.3201.0370.0	1
317	2.3201.0350.0	1
318	9.1113.0033*4	1
319	9.1048.0007*1	1
320	9.1030.0004*2	2
321	2.3201.0325.0	1
322	2.3201.0321.0	1
323	2.3201.0322.0	1
324	2.3201.0327.0	1
325	9.1072.0004.2	2
326	9.1072.0003.1	2
327	2.3201.0270.0	1

REF.	ONDERDEELNR. PART NUMBER REFERENCE TEILNUMMER	AANTAL QUANTITY QUANTITE ANZAHL
------	--	--

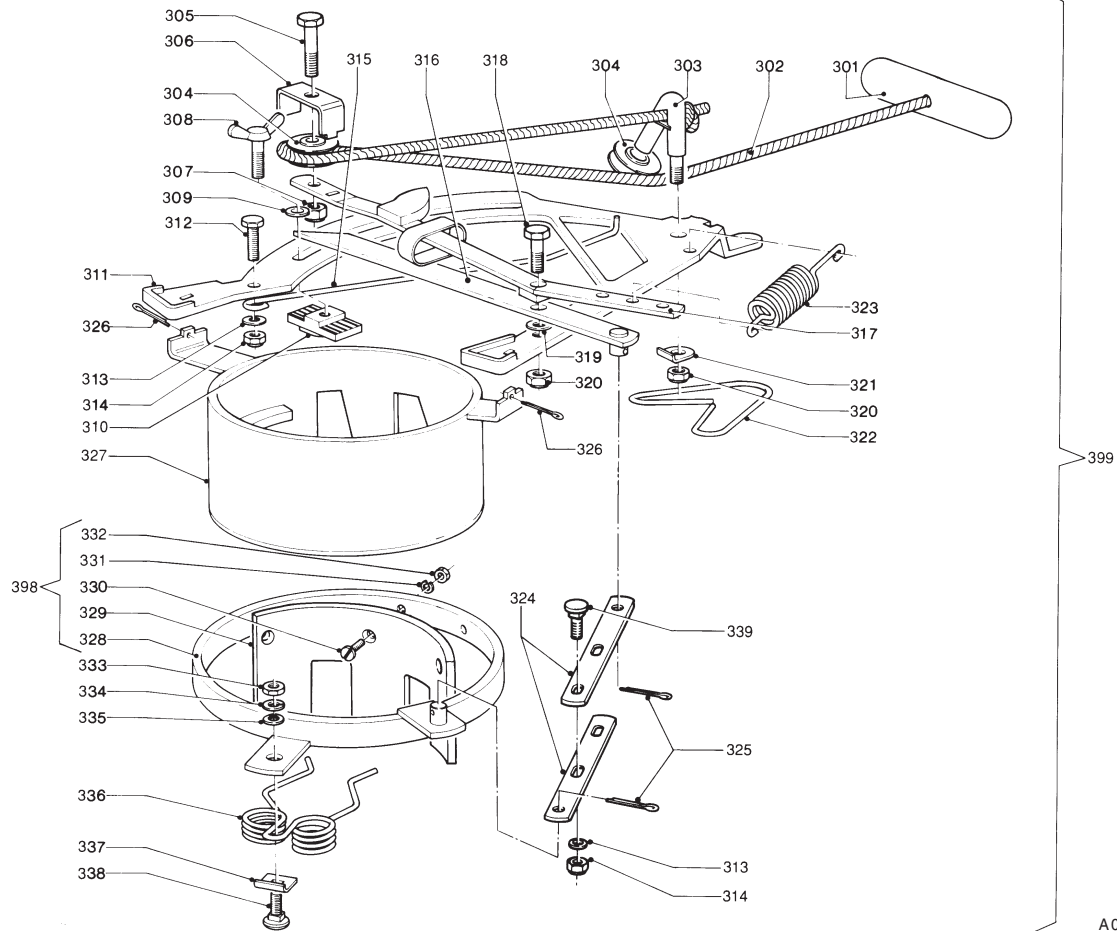
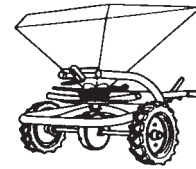
328	2.3201.0300.0	1
329	2.3201.0299.0	1
330	9.1060.0010*6	3
331	9.1121.0008.6	3
332	9.1029.0002*1	3
333	9.1029.0005*4	1
334	9.1121.0004*2	1
335	9.1048.0007*1	1
336	2.3201.0260.0	1
337	2.3201.0261.0	1
338	9.1058.0013*4	1
398	2.3201.0290.8	1
399	2.3201.0250.0	1

= REF. 328-332

= REF. 301-338
(Standaard) Snelsluit-
doseerinrichting
(Standard) On/off device
Fermeture rapide (d'origine)
(Serienmässig) Schnell-
verchluß

LELY

	type nummer type number numéro de type Typnummer	vanaf serienummer as from serial number après numéro de serie ab Seriennummer
W	2.3202.0000.1	10211 - 1146
W	2.3202.0001.1	10213 - 0520



A017-05-01

REF.	ONDERDEELNR. PART NUMBER REFERENCE TEILNUMMER	AANTAL QUANTITY QUANTITE ANZAHL
------	--	--

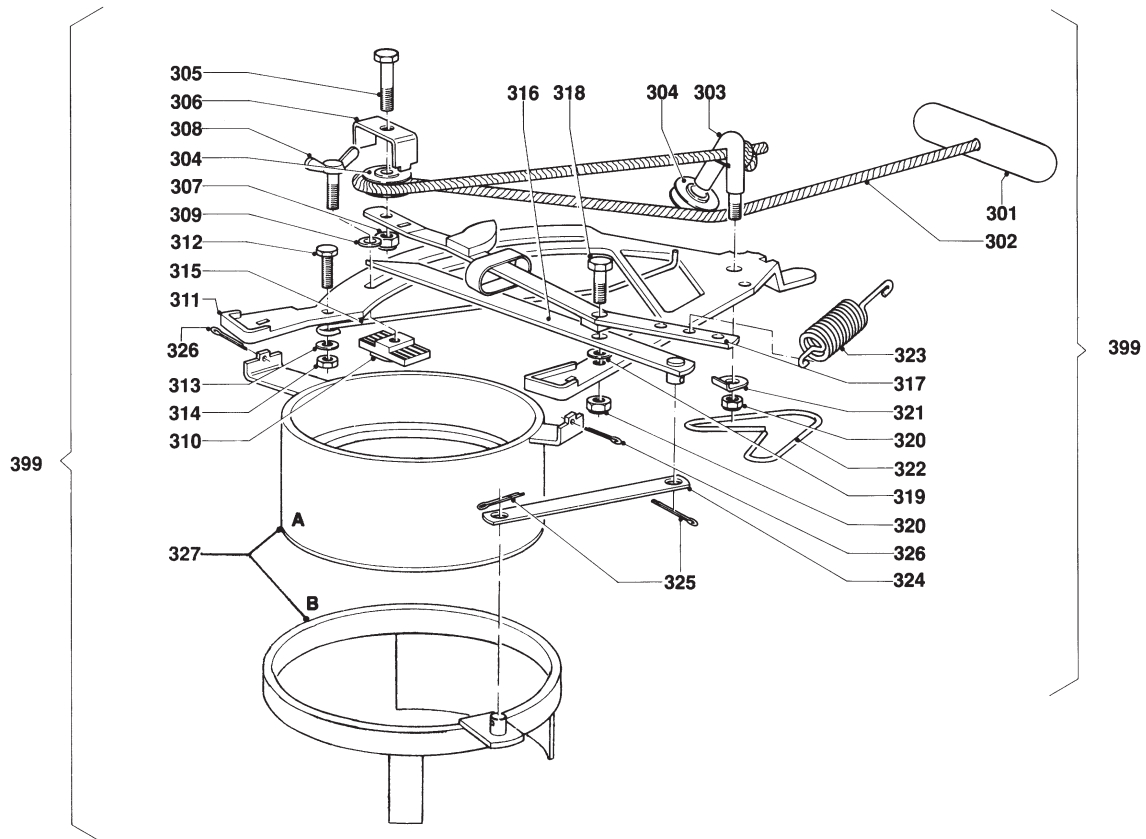
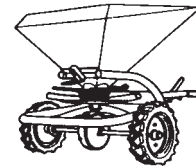
301	2.3201.0328.0	1	
302	1.1655.0658.0	1	2750 mm (1m= 9.1163.0004.2)
303	2.3201.0380.0	1	
304	2.3201.0326.0	2	
305	9.1113.0054*4	1	M12x45 DIN 931-8.8
306	2.3201.0341.0	1	
307	9.1030.0013*4	1	M12 DIN 985-8
308	9.1062.0005*6	1	M10x30 DIN 316-G-4.6
309	9.1048.0009*3	1	A11,5 DIN 7989 [—]
310	2.3201.0324.0	1	
311	2.3201.0320.0	1	
312	9.1113.0014*6	1	M8x20 DIN 933-8.8
313	9.1048.0004*5	3	A8,4 DIN 125 [—]
314	9.1030.0012*3	3	M8 DIN 985-8
315	2.3201.0323.0	1	
316	2.3201.0370.0	1	
317	2.3201.0350.0	1	
318	9.1113.0033*4	1	M10x45 DIN 931-8.8
319	9.1048.0007*1	1	A10,5 DIN 125 [—]
320	9.1030.0004*2	2	M10 DIN 985-8
321	2.3201.0325.0	1	
322	2.3201.0321.0	1	
323	2.3201.0322.0	1	
324	2.3201.0329.0	2	
325	9.1072.0004.2	2	4x30 DIN 94
326	9.1072.0003.1	2	4x20 DIN 94
327	2.3201.0270.0	1	

REF.	ONDERDEELNR. PART NUMBER REFERENCE TEILNUMMER	AANTAL QUANTITY QUANTITE ANZAHL
------	--	--

328	2.3201.0300.0	1	
329	2.3201.0299.0	1	
330	9.1060.0010*6	3	AM6x20 DIN 63-5.8
331	9.1121.0008.6	3	A6 DIN 127 [—]
332	9.1029.0002*1	3	M6 DIN 934-8
333	9.1029.0005*4	1	M10 DIN 934-8
334	9.1121.0004.2	1	A10 DIN 127 [—]
335	9.1048.0007*1	1	A10,5 DIN 125 [—]
336	2.3201.0260.0	1	
337	2.3201.0261.0	1	
338	9.1058.0013*4	1	M10x30 DIN 603
339	9.1058.0022*6	2	M8x25 DIN 603
398	2.3201.0290.8	1	= REF. 328-332
399	2.3201.0250.0	1	= REF. 301-339 (Standaard) Snelsluit- doseerinrichting (Standard) On/off device Fermeture rapide (d'origine) (Serienmässig) Schnell- verchluß

LELY

	type nummer type number numéro de type Typnummer	vanaf serienummer as from serial number après numéro de serie ab Seriennummer
W	2.3202.0000.1	914 - 0650
W	2.3202.0001.1	999 - 0501



A017-03-10

REF.	ONDERDEELNR. PART NUMBER REFERENCE TEILNUMMER	AANTAL QUANTITY QUANTITE ANZAHL
------	--	--

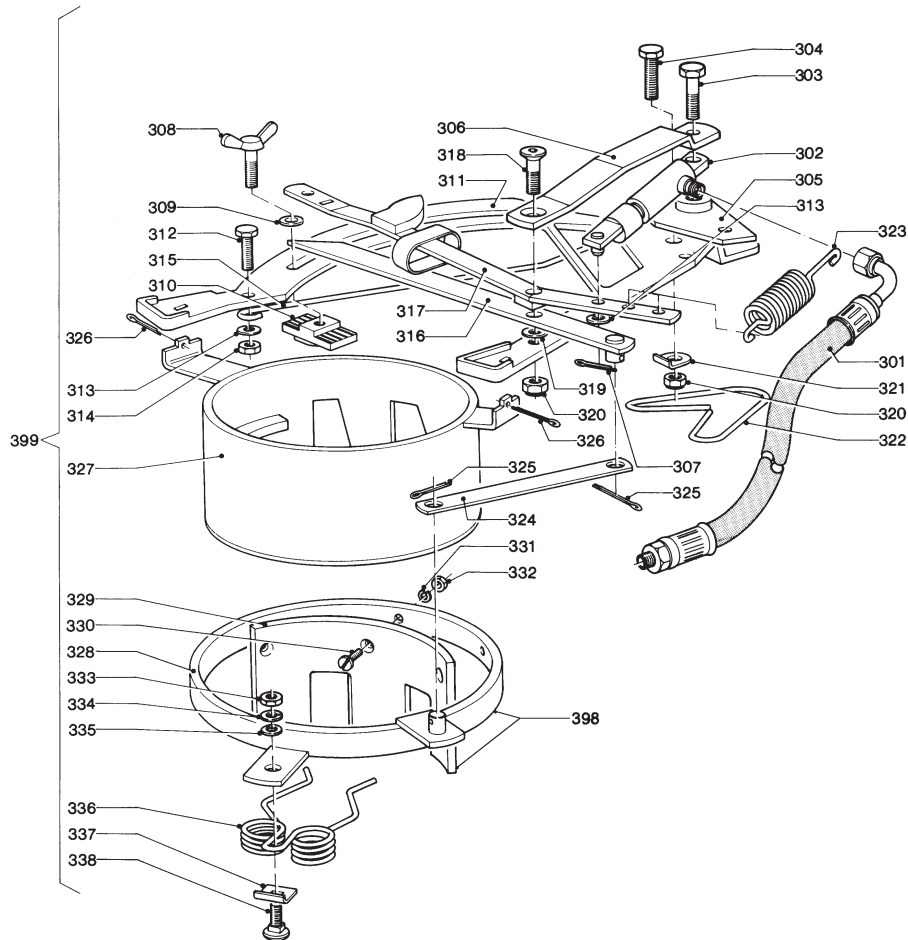
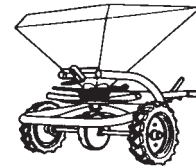
301	2.3201.0328.0	1
302	1.1655.0658.0	1
303	2.3201.0380.0	1
304	2.3201.0326.0	2
305	9.1113.0054*4	1
306	2.3201.0341.0	1
307	9.1030.0013*4	1
308	9.1062.0005*6	1
309	9.1048.0009*3	1
310	2.3201.0324.0	1
311	2.3201.0320.0	1
312	9.1113.0014*6	1
313	9.1048.0004*5	1
314	9.1029.0004*3	1
315	2.3201.0323.0	1
316	2.3201.0370.0	1
317	2.3201.0350.0	1
318	9.1113.0033*4	1
319	9.1048.0007*1	1
320	9.1030.0004*2	2
321	2.3201.0325.0	1
322	2.3201.0321.0	1
323	2.3201.0322.0	1
324	2.3201.0327.0	1
325	9.1072.0004.2	2
326	9.1072.0003.1	2
327	2.3201.2210.1	1

REF.	ONDERDEELNR. PART NUMBER REFERENCE TEILNUMMER	AANTAL QUANTITY QUANTITE ANZAHL
------	--	--

399	2.3201.2210.0	1	= REF. 301-327 Snelsluitdoseerinrichting (Fijn zaad) On/off device (Small seed) Fermeture rapide (Semences fines) Schnellverchluß (Feinsaatgut)
-----	---------------	---	---

LELY

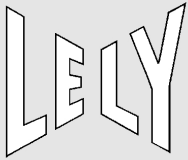
	type nummer type number numéro de type Typnummer	vanaf serienummer as from serial number après numéro de serie ab Seriennummer
W	2.3202.0000.1	914 - 0650
W	2.3202.0001.1	999 - 0501



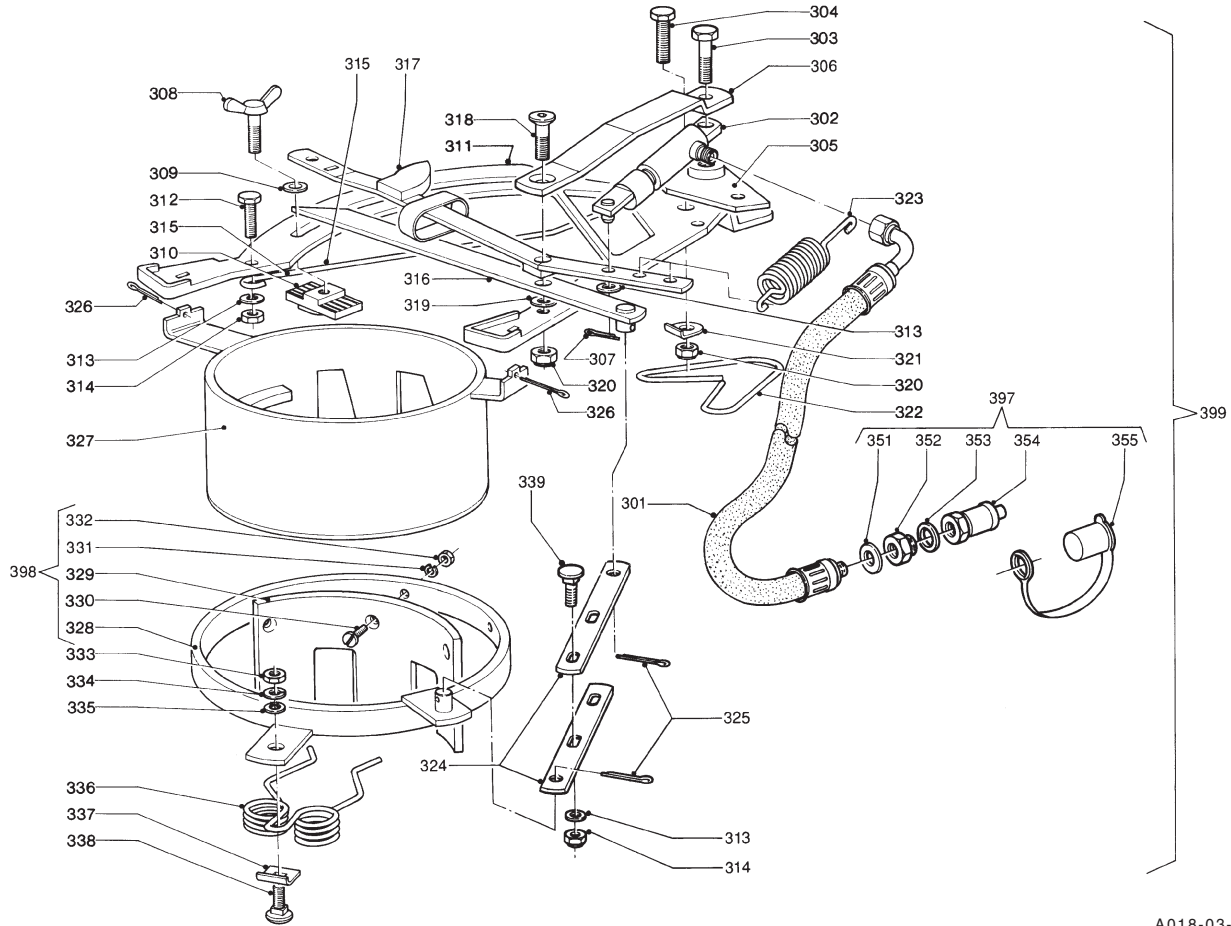
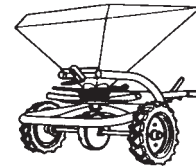
A018-02-11

REF.	ONDERDEELNR. PART NUMBER REFERENCE TEILNUMMER	AANTAL QUANTITY QUANTITE ANZAHL	
301	2.3201.2311.0	1	L= 1810 mm
	4.1016.2120.0	(1)	L= 3050 mm
302	2.3201.2350.0	1	
303	9.1113.0149*1	1	M8x35 DIN 931-8.8
304	9.1113.0120*0	1	M10x30 DIN 933-8.8
305	2.3201.2380.0	1	
306	2.3201.2410.0	1	
307	9.1072.0022.6	1	2x12 DIN 94
308	9.1062.0005*6	1	M10x30 DIN 316-G-4.6
309	9.1048.0009*3	1	A11,5 DIN 7989 [—]
310	2.3201.0324.0	1	
311	2.3201.0320.0	1	
312	9.1113.0014*6	1	M8x20 DIN 933-8.8
313	9.1048.0004*5	2	A8,4 DIN 125 [—]
314	9.1029.0004*3	1	M8 DIN 934-8
315	2.3201.0323.0	1	
316	2.3201.0370.0	1	
317	2.3201.0350.0	1	
318	9.1057.0300*5	1	M10x60 DIN 7991-8.8
319	9.1048.0007*1	1	A10,5 DIN 125 [—]
320	9.1030.0004*2	2	M10 DIN 985-8
321	2.3201.0325.0	1	
322	2.3201.0321.0	1	
323	2.3201.0322.0	1	
324	2.3201.0327.0	1	
325	9.1072.0004.2	2	4x30 DIN 94
326	9.1072.0003.1	2	4x20 DIN 94
327	2.3201.0270.0	1	

REF.	ONDERDEELNR. PART NUMBER REFERENCE TEILNUMMER	AANTAL QUANTITY QUANTITE ANZAHL	
328	2.3201.0300.0	1	
329	2.3201.0299.0	1	
330	9.1060.0010*6	3	M6x20 DIN 63-A
331	9.1121.0008.6	3	A6 DIN 127 [—]
332	9.1029.0002*1	3	M6 DIN 934-8
333	9.1029.0005*4	1	M10 DIN 934-8
334	9.1121.0004*2	1	A10 DIN 127 [—]
335	9.1048.0007*1	1	A10,5 DIN 125 [—]
336	2.3201.0260.0	1	
337	2.3201.0261.0	1	
338	9.1058.0013*4	1	M10x30 DIN 603
398	2.3201.0290.8	1	= REF. 328-332
399	2.3201.2300.0	1	= REF. 301-338 Hydraulische snelsluitdoseerinrichting Hydraulic on/off device Fermeture rapide hydraulique Hydraulischer Schnellverschluss



	type nummer type number numéro de type Typnummer	vanaf serienummer as from serial number après numéro de serie ab Seriennummer
W	2.3202.0000.1	10303 - 1356
W	2.3202.0001.1	10313 - 0528



A018-03-01

REF.	ONDERDEELNR. PART NUMBER REFERENCE TEILNUMMER	AANTAL QUANTITY QUANTITE ANZAHL	
------	--	--	--

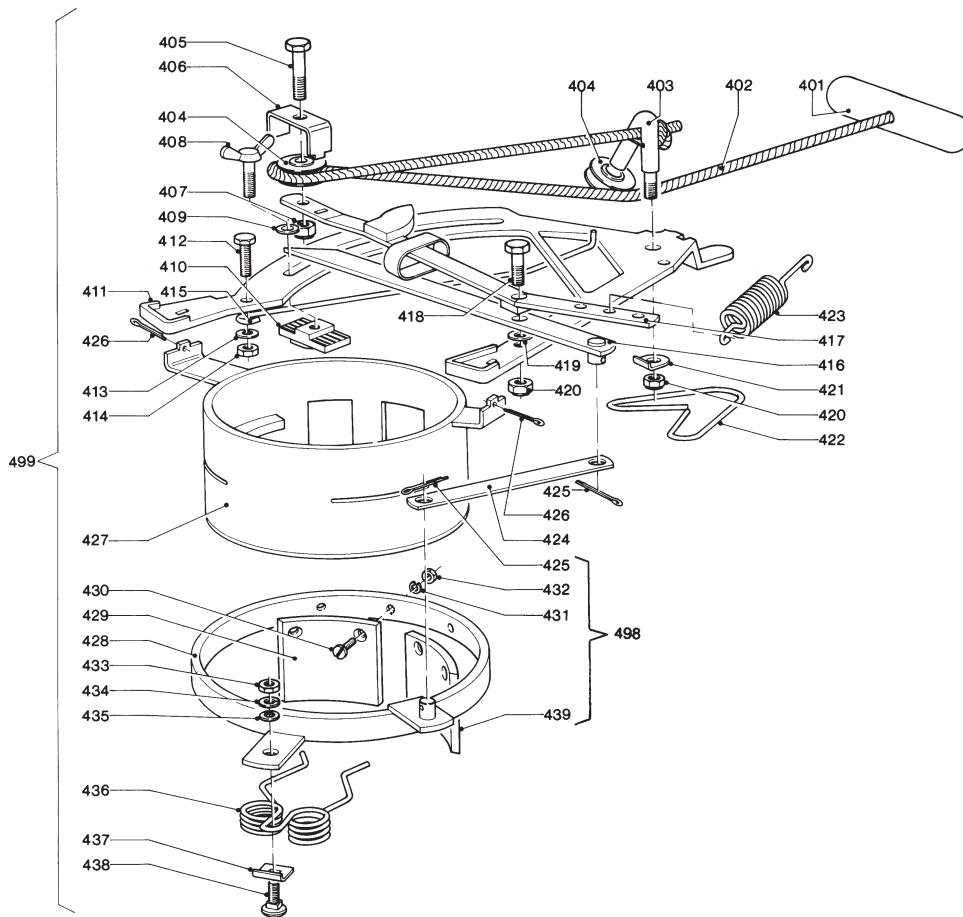
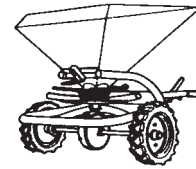
301	2.3201.2311.0 4.1016.2120.0	1 (1)	L = 1810 mm L = 3050 mm
302	2.3201.2350.0	1	
303	9.1113.0149*1	1	M8x35 DIN 931-8.8
304	9.1113.0120*0	1	M10x30 DIN 933-8.8
305	2.3201.2380.0	1	
306	2.3201.2410.0	1	
307	9.1072.0022.6	1	2x12 DIN 94
308	9.1062.0005*6	1	M10x30 DIN 316-G-4.6
309	9.1048.0009*3	1	A11,5 DIN 7989 [—]
310	2.3201.0324.0	1	
311	2.3201.0320.0	1	
312	9.1113.0014*6	1	M8x20 DIN 933-8.8
313	9.1048.0004*5	4	A8,4 DIN 125 [—]
314	9.1030.0012*3	3	M8 DIN 985-8
315	2.3201.0323.0	1	
316	2.3201.0370.0	1	
317	2.3201.0350.0	1	
318	9.1057.0300*5	1	M10x60 DIN 7991-8.8
319	9.1048.0007*1	1	A10,5 DIN 125 [—]
320	9.1030.0004*2	2	M10 DIN 985-8
321	2.3201.0325.0	1	
322	2.3201.0321.0	1	
323	2.3201.0322.0	1	
324	2.3201.0329.0	2	
325	9.1072.0004.2	2	4x30 DIN 94
326	9.1072.0003.1	2	4x20 DIN 94
327	2.3201.0270.0	1	

REF.	ONDERDEELNR. PART NUMBER REFERENCE TEILNUMMER	AANTAL QUANTITY QUANTITE ANZAHL	
------	--	--	--

328	2.3201.0300.0	1	
329	2.3201.0299.0	1	
330	9.1060.0010*6	3	M6x20 DIN 63-A
331	9.1121.0008.6	3	A6 DIN 127 [—]
332	9.1029.0002*1	3	M6 DIN 934-8
333	9.1029.0005*4	1	M10 DIN 934-8
334	9.1121.0004.2	1	A10 DIN 127 [—]
335	9.1048.0007*1	1	A10,5 DIN 125 [—]
336	2.3201.0260.0	1	
337	2.3201.0261.0	1	
338	9.1058.0013*4	1	M10x30 DIN 603
339	9.1058.0022*6	2	M8x25 DIN 603
351	9.1137.0401.5	1	Ø14x20x1,5 Cu [—]
352	9.1137.0603.4	1	1/2"-1/4" [—]
353	9.1137.0402.6	1	Ø22x29x1,5 Cu [—]
354	9.1137.0302.4	1	1/2" G
355	9.1137.0303.5	1	1/2" PVC
397	2.3201.2312.8	1	= REF. 351-355
398	2.3201.0290.8	1	= REF. 328-332
399	2.3201.2300.0	1	= REF. 301-355 Hydraulische snelsluitdoseerinrichting Hydraulic on/off device Fermeture rapide hydraulique Hydraulischer Schnellverschluss

LELY

	type nummer type number numéro de type Typnummer	vanaf serienummer as from serial number après numéro de serie ab Seriennummer
W	2.3202.0000.1	914 - 0650
W	2.3202.0001.1	999 - 0501



A027-02-11

REF.	ONDERDEELNR. PART NUMBER REFERENCE TEILNUMMER	AANTAL QUANTITY QUANTITE ANZAHL
------	--	--

401	2.3201.0328.0	1
402	1.1655.0658.0	1
403	2.3201.0380.0	1
404	2.3201.0326.0	2
405	9.1113.0054*4	1
406	2.3201.0341.0	1
407	9.1030.0013*4	1
408	9.1062.0005*6	1
409	9.1048.0009*3	1
410	2.3201.0324.0	1
411	2.3201.0320.0	1
412	9.1113.0014*6	1
413	9.1048.0004*5	2
414	9.1029.0004*3	1
415	2.3201.0323.0	1
416	2.3201.2190.0	1
417	2.3201.0350.0	1
418	9.1113.0132*5	1
419	9.1048.0007*1	1
420	9.1030.0004*2	2
421	2.3201.0325.0	1
422	2.3201.0321.0	1
423	2.3201.0322.0	1
424	2.3201.2159.0	1
425	9.1072.0004.2	2

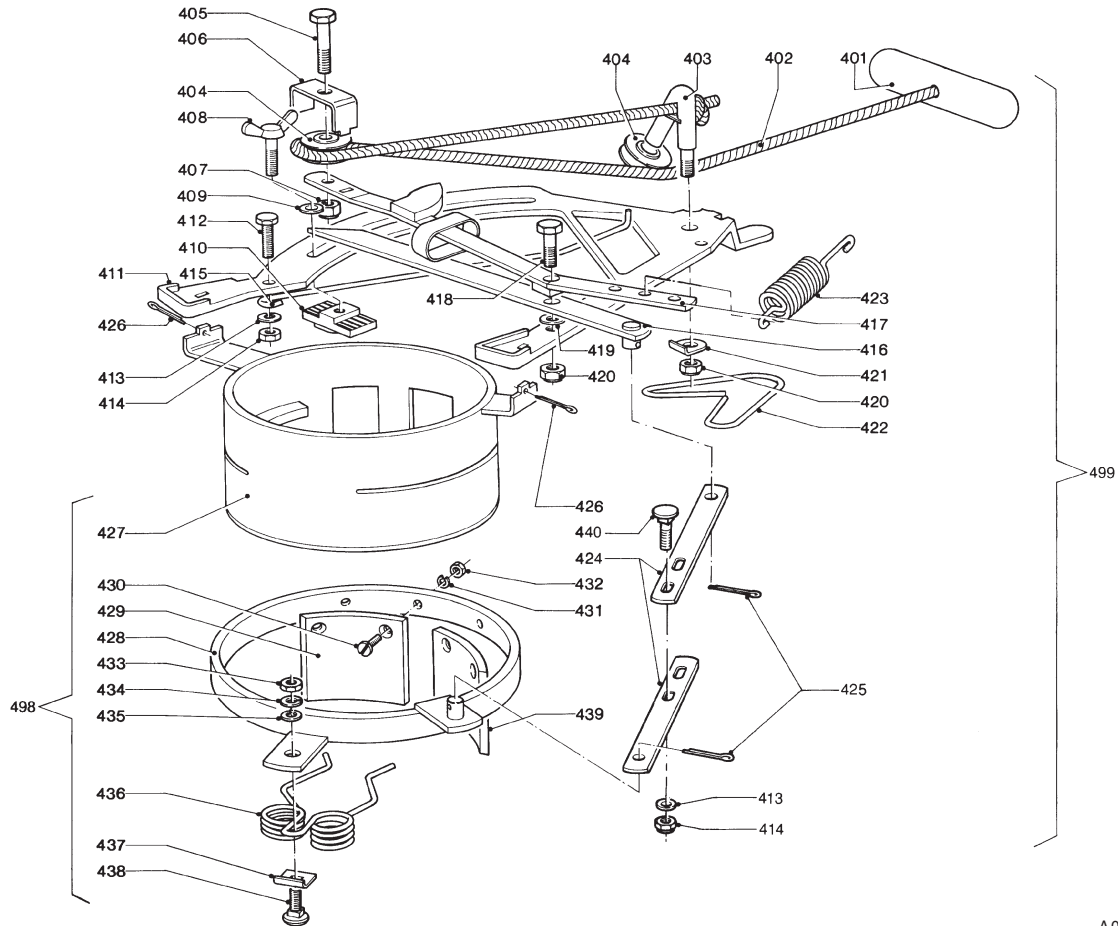
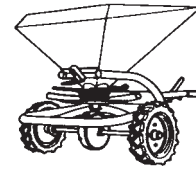
REF.	ONDERDEELNR. PART NUMBER REFERENCE TEILNUMMER	AANTAL QUANTITY QUANTITE ANZAHL
------	--	--

426	9.1072.0003.1	2
427	2.3201.2160.0	1
428	2.3201.2180.0	1
429	2.3201.2179.0	1
430	9.1060.0010*6	4
431	9.1121.0008.6	4
432	9.1029.0002*1	4
433	9.1029.0005*4	1
434	9.1121.0004.2	1
435	9.1048.0007*1	1
436	2.3201.0260.0	1
437	2.3201.0261.0	1
438	9.1058.0013*4	1
439	2.3201.2178.0	1
498	2.3201.2158.0	1
499	2.3201.2150.0	1

= REF. 425-439
 = REF. 401-439
 Massa-
 snelsluitdoseerinrichting
 On/off device for big output
 Fermeture rapide
 à grand débit
 Grossausbringungs-
 schnellverschluss

LELY

	type nummer type number numéro de type Typnummer	vanaf serienummer as from serial number après numéro de serie ab Seriennummer
W	2.3202.0000.1	10303 - 1356
W	2.3202.0001.1	10313 - 0528



A027-03-01

REF.	ONDERDEELNR. PART NUMBER REFERENCE TEILNUMMER	AANTAL QUANTITY QUANTITE ANZAHL
------	--	--

401	2.3201.0328.0	1
402	1.1655.0658.0	1
403	2.3201.0380.0	1
404	2.3201.0326.0	2
405	9.1113.0054*4	1
406	2.3201.0341.0	1
407	9.1030.0013*4	1
408	9.1062.0005*6	1
409	9.1048.0009*3	1
410	2.3201.0324.0	1
411	2.3201.0320.0	1
412	9.1113.0014*6	1
413	9.1048.0004*5	3
414	9.1030.0012*3	3
415	2.3201.0323.0	1
416	2.3201.2190.0	1
417	2.3201.0350.0	1
418	9.1113.0132*5	1
419	9.1048.0007*1	1
420	9.1030.0004*2	2
421	2.3201.0325.0	1
422	2.3201.0321.0	1
423	2.3201.0322.0	1
424	2.3201.2156.0	2
425	9.1072.0004.2	2

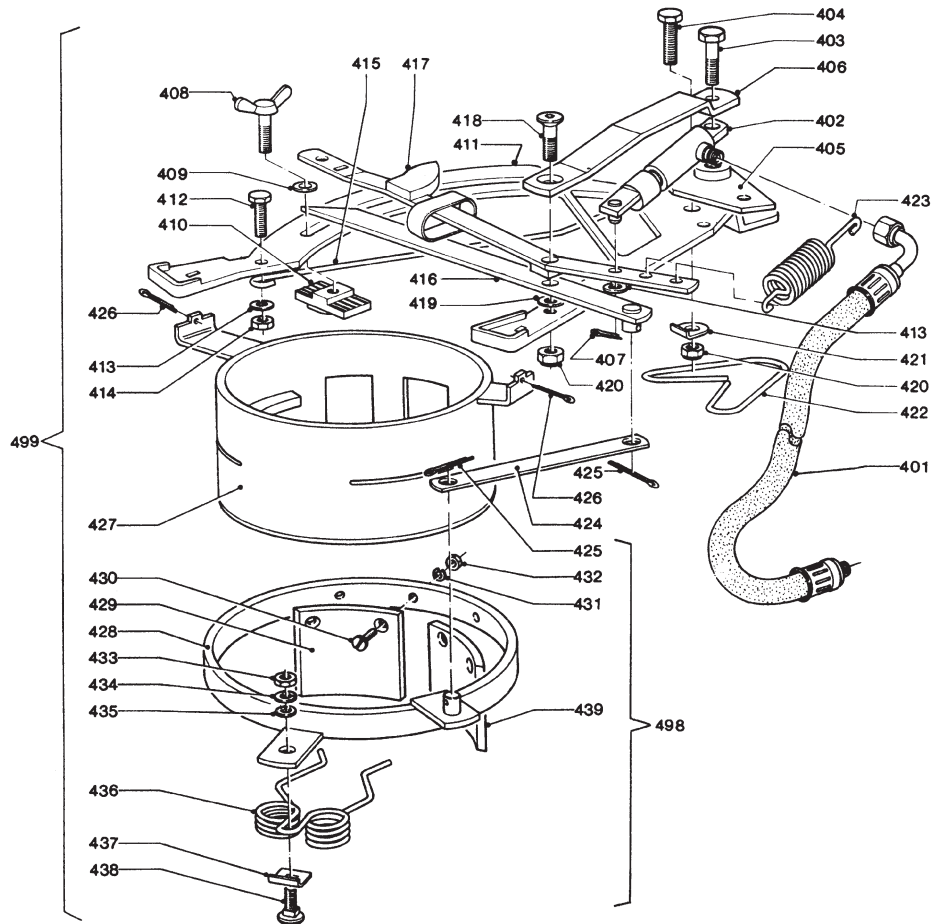
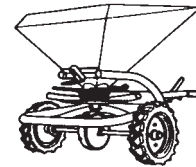
REF.	ONDERDEELNR. PART NUMBER REFERENCE TEILNUMMER	AANTAL QUANTITY QUANTITE ANZAHL
------	--	--

426	9.1072.0003.1	2
427	2.3201.2160.0	1
428	2.3201.2180.0	1
429	2.3201.2179.0	1
430	9.1060.0010*6	4
431	9.1121.0008.6	4
432	9.1029.0002*1	4
433	9.1029.0005*4	1
434	9.1121.0004.2	1
435	9.1048.0007*1	1
436	2.3201.0260.0	1
437	2.3201.0261.0	1
438	9.1058.0013*4	1
439	2.3201.2178.0	1
440	9.1058.0022*6	2
498	2.3201.2158.0	1
499	2.3201.2150.0	1

4x20 DIN 94
AM6x20 DIN 63-5.8
A6 DIN 127 [—/—]
M6 DIN 934-8
M10 DIN 934-8
A10 DIN 127 [—/—]
A10,5 DIN 125 [—/—]
M10x30 DIN 603
M8x25 DIN 603
= REF. 425-439
= REF. 401-440
Massa-
snelsluitdoseerinrichting
On/off device for big output
Fermeture rapide
à grand débit
Grossausbringungs-
schnellverschluss

LELY

	type number type number número de type Typnummer	vanaf serienummer as from serial number après numéro de serie ab Seriennummer
W	2.3202.0000.1	914 - 0650
W	2.3202.0001.1	999 - 0501



A018-27-00

REF.	ONDERDEELNR. PART NUMBER REFERENCE TEILNUMMER	AANTAL QUANTITY QUANTITE ANZAHL	
------	--	--	--

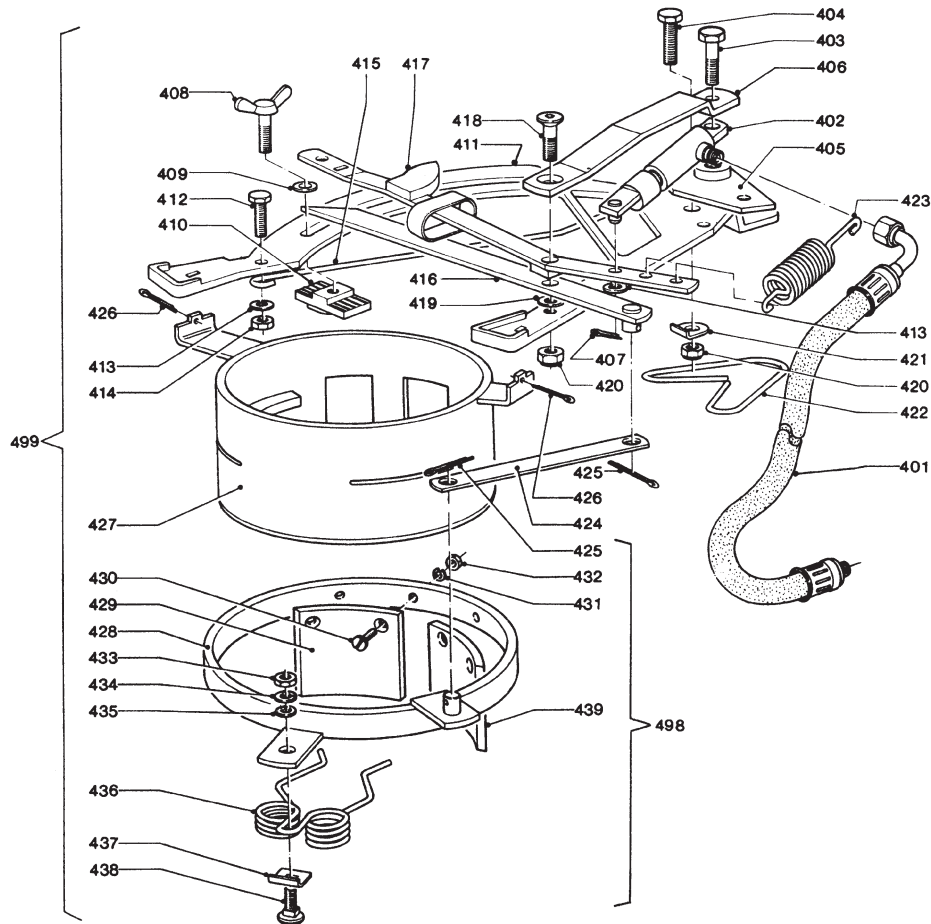
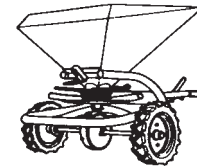
401	2.3201.2311.0 4.1016.2120.0	1 (1)	L= 1810 mm L= 3050 mm
402	2.3201.2350.0	1	
403	9.1113.0149*1	1	M8x35 DIN 931-8.8
404	9.1113.0120*0	1	M10x30 DIN 933-8.8
405	2.3201.2380.0	1	
406	2.3201.2410.0	1	
407	9.1072.0022.6	1	2x12 DIN 94
408	9.1062.0005*6	1	M10x30 DIN 316-G-4.6
409	9.1048.0009*3	1	A11,5 DIN 7989 [—]
410	2.3201.0324.0	1	
411	2.3201.0320.0	1	
412	9.1113.0014*6	1	M8x20 DIN 933-8.8
413	9.1048.0004*5	2	A8,4 DIN 125 [—]
414	9.1029.0004*3	1	M8 DIN 934-8
415	2.3201.0323.0	1	
416	2.3201.2190.0	1	
417	2.3201.0350.0	1	
418	9.1057.0300*5	1	M10x60 DIN 7991-8.8
419	9.1048.0007*1	1	A10,5 DIN 125 [—]
420	9.1030.0004*2	2	M10 DIN 985-8
421	2.3201.0325.0	1	
422	2.3201.0321.0	1	
423	2.3201.0322.0	1	
424	2.3201.2159.0	1	

REF.	ONDERDEELNR. PART NUMBER REFERENCE TEILNUMMER	AANTAL QUANTITY QUANTITE ANZAHL	
------	--	--	--

425	9.1072.0004.2	2	4x30 DIN 94
426	9.1072.0003.1	2	4x20 DIN 94
427	2.3201.2160.0	1	
428	2.3201.2180.0	1	
429	2.3201.2179.0	1	
430	9.1060.0010*6	4	M6x20 DIN 63-A
431	9.1121.0008.6	4	A6 DIN 127 [—]
432	9.1029.0002*1	4	M6 DIN 934-8
433	9.1029.0005*4	1	M10 DIN 934-8
434	9.1121.0004.2	1	A10 DIN 127 [—]
435	9.1048.0007*1	1	A10,5 DIN 125 [—]
436	2.3201.0260.0	1	
437	2.3201.0261.0	1	
438	9.1058.0013*4	1	M10x30 DIN 603
439	2.3201.2178.0	1	
498	2.3201.2158.0	1	= REF. 425-439
499	2.3201.2157.0	1	= REF. 401-439 Hydraulische massasneluitedoseerinrichting Hydraulic on/off device for big output Fermeture rapide hydraulique à grand débit Hydr. Grossausbringungs-schnellverschluss

LELY

	type number type number número de type Typnummer	vanaf serienummer as from serial number après numéro de serie ab Seriennummer
W	2.3202.0000.1	1040? - 1500
W	2.3202.0001.1	1040? - 0550



A018-27-00

REF.	ONDERDEELNR. PART NUMBER REFERENCE TEILNUMMER	AANTAL QUANTITY QUANTITE ANZAHL	
------	--	--	--

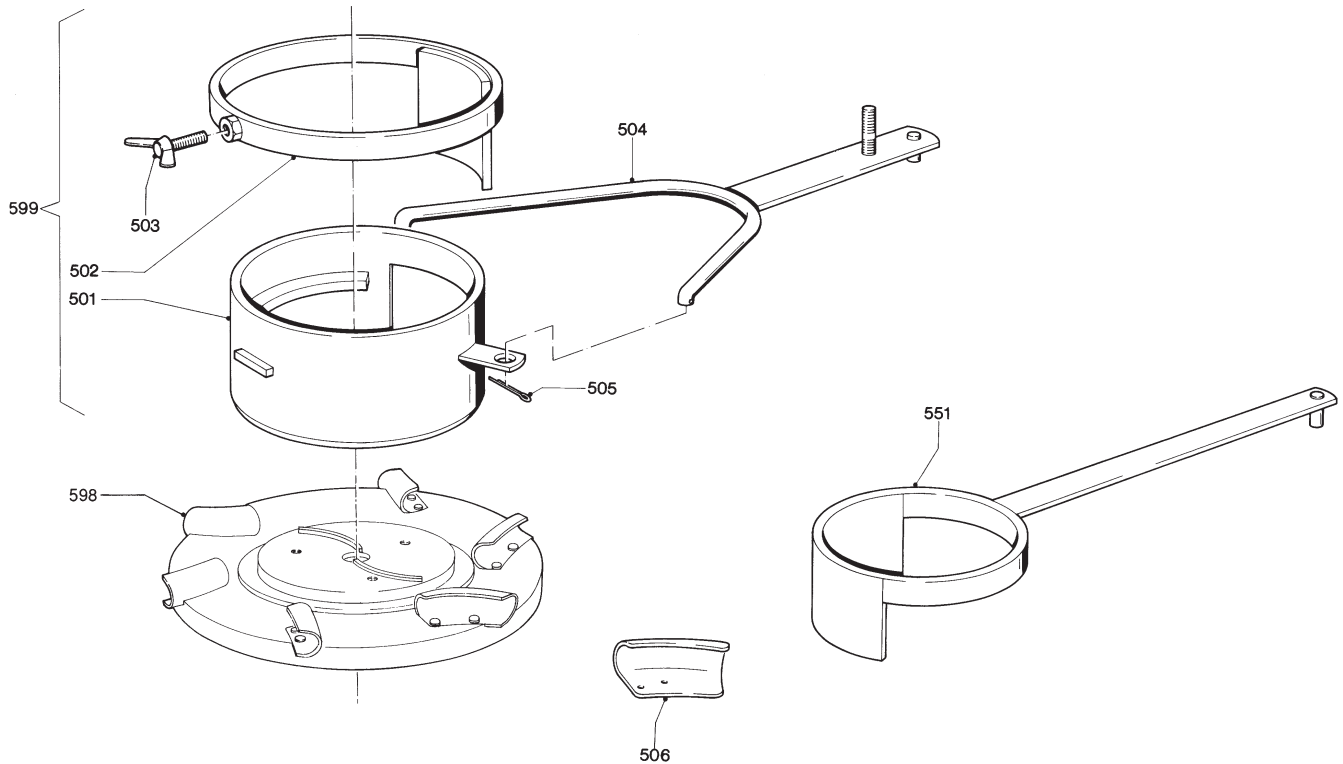
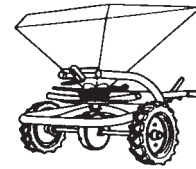
401	2.3201.2311.0	1	L= 1810 mm
	4.1016.2120.0	(1)	L= 3050 mm
402	2.3201.2350.0	1	
403	9.1113.0149*1	1	M8x35 DIN 931-8.8
404	9.1113.0120*0	1	M10x30 DIN 933-8.8
405	2.3201.2380.0	1	
406	2.3201.2410.0	1	
407	9.1072.0022.6	1	2x12 DIN 94
408	9.1062.0005*6	1	M10x30 DIN 316-G-4.6
409	9.1048.0009*3	1	A11,5 DIN 7989 [—]
410	2.3201.0324.0	1	
411	2.3201.0320.0	1	
412	9.1113.0014*6	1	M8x20 DIN 933-8.8
413	9.1048.0004*5	4	A8,4 DIN 125 [—]
414	9.1030.0012*3	3	M8 DIN 985-8
415	2.3201.0323.0	1	
416	2.3201.2190.0	1	
417	2.3201.0350.0	1	
418	9.1057.0300*5	1	M10x60 DIN 7991-8.8
419	9.1048.0007*1	1	A10,5 DIN 125 [—]
420	9.1030.0004*2	2	M10 DIN 985-8
421	2.3201.0325.0	1	
422	2.3201.0321.0	1	
423	2.3201.0322.0	1	
424	2.3201.2156.0	2	
425	9.1072.0004.2	2	4x30 DIN 94
426	9.1072.0003.1	2	4x20 DIN 94
427	2.3201.2160.0	1	

REF.	ONDERDEELNR. PART NUMBER REFERENCE TEILNUMMER	AANTAL QUANTITY QUANTITE ANZAHL	
------	--	--	--

428	2.3201.2180.0	1	
429	2.3201.2179.0	1	
430	9.1060.0010*6	4	M6x20 DIN 63-A
431	9.1121.0008.6	4	A6 DIN 127 [—]
432	9.1029.0002*1	4	M6 DIN 934-8
433	9.1029.0005*4	1	M10 DIN 934-8
434	9.1121.0004.2	1	A10 DIN 127 [—]
435	9.1048.0007*1	1	A10,5 DIN 125 [—]
436	2.3201.0260.0	1	
437	2.3201.0261.0	1	
438	9.1058.0013*4	1	M10x30 DIN 603
439	2.3201.2178.0	1	
440	9.1058.0022*6	2	M8x25 DIN 603
451	9.1137.0401.5	1	Ø14x20x1,5 Cu [—]
452	9.1137.0603.4	1	1/2"-1/4"
453	9.1137.0402.6	1	Ø22x29x1,5 Cu [—]
454	9.1137.0302.4	1	1/2" G
455	9.1137.0303.5	1	1/2" PVC
497	2.3201.2312.8	1	= REF. 451-455
498	2.3201.2158.0	1	= REF. 425-439
499	2.3201.2157.0	1	= REF. 401-455 Hydraulische massa- snelsluitdoseerinrichting On/off device for big output Fermeture rapide hydraulique à grand débit Hydr. Grossausbringungs- schnellverschluss

LELY

	type number type number numéro de type Typnummer	vanaf serienummer as from serial number après numéro de serie ab Seriennummer
W	2.3202.0000.1	914 - 0650
W	2.3202.0001.1	999 - 0501



A019-03-00

REF.	ONDERDEELNR. PART NUMBER REFERENCE TEILNUMMER	AANTAL QUANTITY QUANTITE ANZAHL	
------	--	--	--

501	2.3201.2070.0	1	
502	2.3201.2080.0	1	
503	9.1062.0006*0	1	M12x30 DIN 316
504	2.3201.0440.0	1	
505	9.1072.0004*2	2	4x30 DIN 94

506	2.3201.2059.0	6	Schoep (zand/zout) Spoon (sand/salt) Aube (sable/sel) Leitschaufel (Sand/Salz)
-----	---------------	---	---

REF.	ONDERDEELNR. PART NUMBER REFERENCE TEILNUMMER	AANTAL QUANTITY QUANTITE ANZAHL	
------	--	--	--

551	2.3201.0780.0	1	Compostdosering Compost feed system Système de dosage compost Kompostdosiersystem
-----	---------------	---	--

598	2.3201.2051.3	1	= REF. 051-057 (052= 506) Werpschijf z/z (compleet) Ejector disc s/s(complete) Disque éjecteur s/s (complet) Wurfscheibe S/S (komplett)
-----	---------------	---	---

599	2.3201.2051.2	1	= REF. 501-505 Zand/zout-dosering Sand/salt feed system Système de dosage sable/sel Sand/Salz-Dosiersystem
-----	---------------	---	---