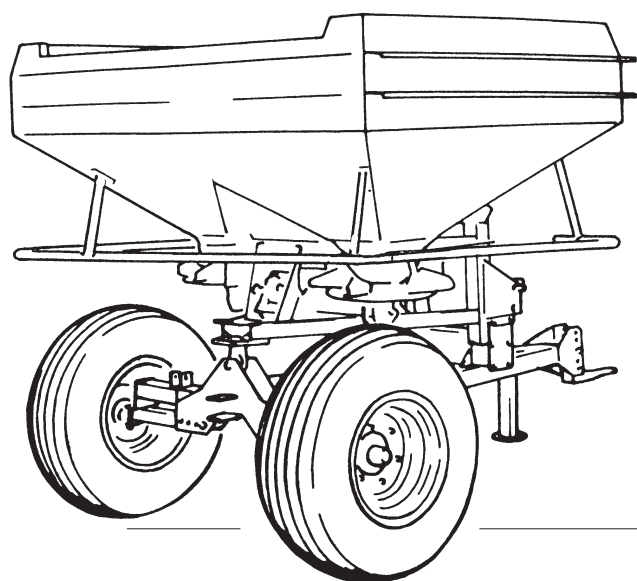


LELY

HIGH - TECH
IN AGRICULTURE

ONDERDELENLIJST
PARTS LIST
LISTE DE PIECES DE RECHANGE
ERSATZTEILLISTE

CARRIER
WHEELED CARRIER
CHARIOT DE TRANSPORT
FAHRGESTEL



CENTERLINER S/SL - SE

| CENTERLINER | type number type number numéro de type Typennummer | vanaf serienummer as from serial number après numéro serie ab Seriennummer |
|-------------|---|---|
| | 2.3218.2111.1 | 1000 - 0501 |
| | 2.3218.2115.1 | 10511 - 0501 |



ONDERDELEN

Bij het bestellen van onderdelen is het belangrijk dat u het type- en serienummer van uw machine opgeeft.

Gebruik alleen originele LELY-onderdelen.

SPARE PARTS

When ordering spare parts, it is important that you indicate the type and serial number of your machine.

Use only genuine LELY parts.

PIECES DE RECHANGE

En commandant des pièces de rechange il importe que vous indiquiez les numéros de type et de série de votre machine.

N'utiliser que des pièces d'origines LELY.

ERSATZTEILE

Beim Bestellen von Ersatzteilen ist es wichtig, daß Sie die Typ- und Seriennummer Ihrer Maschine angeben.

Nur Original-LELY-Ersatzteile verwenden.

Typ- und Seriennummer in nebenstehende Abbildung eintragen. Bei künftigen Bestellungen haben Sie die Nummer dann griffbereit.

Vul het type- en serienummer hieronder in.

Bij toekomstige onderdelenbestellingen heeft u de nummers dan bij de hand.

Complete the box below with the type and serial number.

This is an easy reference with a view to future spare parts ordering.

Veuillez noter, ci-dessous, les numéros de type et de série.

Ceci est important pour toutes commandes de pièces de rechange.

| | | | | |
|-------------|--|-------------------------------------|--|-----------|
| LELY | | LELY INDUSTRIES NV | | CE |
| | | 3155 PD MAASLAND THE NETHERLANDS | | |
| | | kg | | |
| Type | | | | |
| Ser.Nr. | | | | |

Verklaring van de in de onderdelenlijst gebruikte tekens.

Explanation of signs used in the parts list.

Explication des signes qui figurent dans la liste des pièces.

Erläuterung der in der Ersatzteilliste verwendeten Zeichen.

[R] = RECHTSE UITVOERING
RH VERSION

[L] = LINKSE UITVOERING
LH VERSION

Onder rechtse of linkse uitvoering wordt de plaats van het onderdeel verstaan, gezien van de achterzijde van de machine.

By RH or LH version the position of the part is meant, seen from the rear of the machine

[RD] = RECHTSOM DRAAIENDE UITVOERING
RH ROTATING VERSION

[LD] = LINKSOM DRAAIENDE UITVOERING
LH ROTATING VERSION

Onder rechtson of linksom draaiende uitvoering wordt de draairichting van het onderdeel verstaan, gezien van de bovenzijde van de machine.

By RH or LH rotating version the sense of rotating of the part is meant, seen from the top of the machine.

[x] = ONDERDEEL WORDT NIET GETOOND
PART IS NOT SHOWN

Bijvoorbeeld linkse uitvoering overeenkomstig de wel getekende rechtse uitvoering.

E.g. : LH version is similar to the RH version, which is actually shown.

[#] = NIET LOS LEVERBAAR
NOT AVAILABLE SEPARATELY

~ = AANTAL (INDIEN NODIG) AFHANKELIJK VAN INBOUWMAAT
QUANTITY (IF APPLICABLE) DEPENDING UPON ASSEMBLY

[—] = SLUITRING

[—/—] = VEERRING

[####] = TANDVEERRING

[>|<] = OLIEKEERRING

[T+T] = TANDWIELSET

[D+D] = VULRINGSET

[A+A] = SET AFDICHTINGSRINGEN

WASHER

SPRING WASHER

SHAKE-PROOF WASHER

OIL SEAL

PAIR OF GEARS

SHIM SET

SET OF SEALING RINGS

VERSION DROITE
RECHTE AUSFÜHRUNG

VERSION GAUCHE
LINKE AUSFÜHRUNG

Par version droite ou gauche on entend la position de la pièce, vue de l'arrière de la machine.

Die Verweisungen "rechte Ausführung" oder "linke Ausführung" geben die Position des Teils, von der Hinterseite der Maschine aus gesehen, an.

VERSION ROTATION A DROITE
RECHTSUMDREHENDE AUSFÜHRUNG

VERSION ROTATION A GAUCHE
LINKSUMDREHENDE AUSFÜHRUNG

Version rotation à droit: ceci correspond au sens de rotation de la pièce, vue du dessus la machine.

Mit diesen Verweisungen wird die Drehrichtung des Teils von der Oberseite der Maschine aus gesehen, angegeben.

PIECE N'EST PAS MONTÉE
TEIL WIRD NICHT GEZEIGT

Exemple : la version gauche est représentée. La version droite correspond à la version gauche, mais n'est pas représentée.

Beispiel : die linke Ausführung entspricht der effektiv gezeigten Rechten.

VENDU EN KIT UNIQUEMENT
NICHT SEPARAT LIEFERBAR

QUANTITE (SI NÉCESSAIRE) EN FONCTION DU MONTAGE
ANZAHL VOM EINBAUMASS ABHÄNGIG (WENN ERFORDERLICH)

RONDELLE PLATE

RONDELLE GROWER

RONDELLE EVENTAIL

ETANCHEITE

JEU D'ENGRENAGES

JEU D'ÉPAISSEURS

JEU D'ANNEAUX D'ETANCHEITE

UNTERLEGSCHIEBE

FEDERING

RÄNDELFEEDERING

ÖLDICHTUNGSRING

ZAHNRÄDERSATZ

PASSSCHEIBENSATZ

DICHTUNGSRINGENSATZ

CENTERLINER

LELY

2.3218.2111.1 1000 - 0501
2.3218.2115.1 10511 - 0501

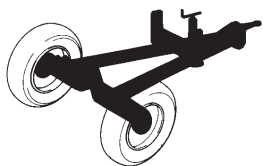
type number
type number
numéro de type
Typnummer

vanaf serienummer
as from serial number
après numéro de série
ab Seriennummer

Inhoud
Contents
Index
Inhalt

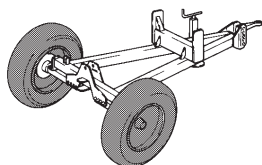
CARRIER
WHEELED CARRIER
CHARIOT DE TRANSPORT
FAHRGESTELL

pagina
page
page
Seite



Carrier + ashelft
Wheeled carrier + shaft half
Chariot de transport + demi-arbre
Fahrgestell + Wellenhälfte

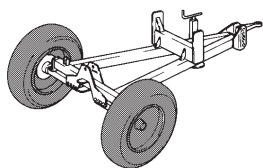
01



Velg + luchtband
Rim + pneumatic tyre
Jante + pneumatique
Felge + Luftreifen

S/SL

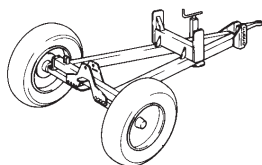
02



Velg + luchtband
Rim + pneumatic tyre
Jante + pneumatique
Felge + Luftreifen

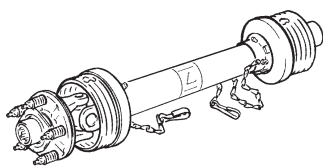
SE

03



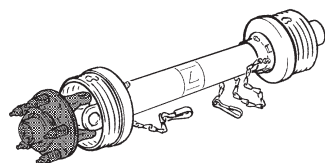
Bedieningskabel
Control cable
Câble de commande
Bedienungskabel

02/03



Koppelingsas
PTO shaft
Arbre de transmission
Gelenkwelle

04



Slipkoppeling
Friction clutch
Limiteur à friction
Reibkupplung

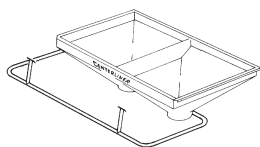
05

Verplichte beschermbeugel: zie onderdelenlijst kunstmeststrooiers

Mandatory protection bracket: see parts list fertilizerspreaders

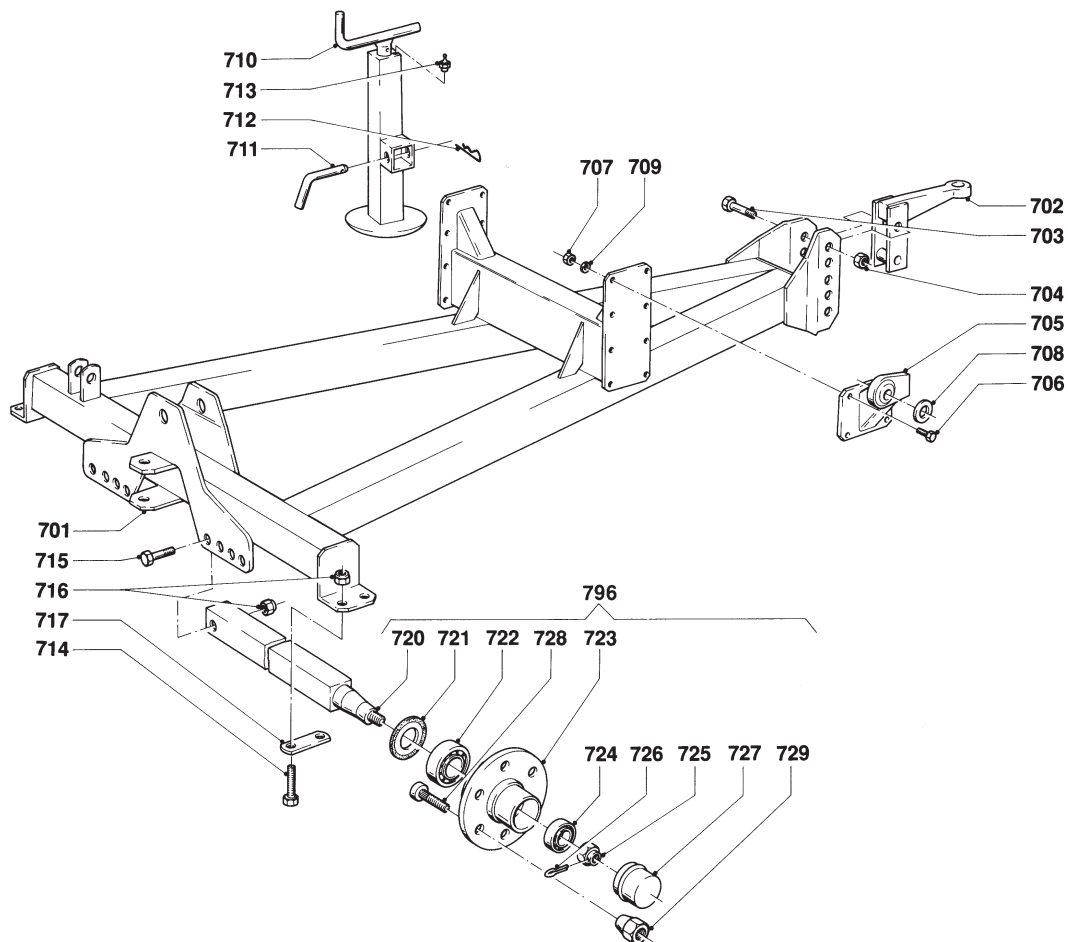
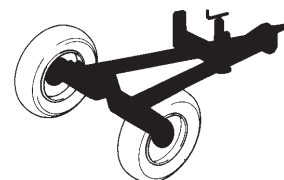
Arceau protecteur obligatoire: reportez-vous à la liste de pièces de rechange des épandeurs d'engrais

Vorgeschriebener Schutzbügel: siehe Ersatzteilliste Düngerstreuer



LELY

| CENTERLINER | type number type number numéro de type Typnummer | vanaf serienummer as from serial number après numéro de serie ab Seriennummer |
|-------------|---|--|
| S/SL | 2.3218.2111.1 | 952 - 0525 |



| REF. | ONDERDEELNR. PART NUMBER REFERENCE TEILNUMMER | AANTAL QUANTITY QUANTITE ANZAHL |
|------|--|--|
|------|--|--|

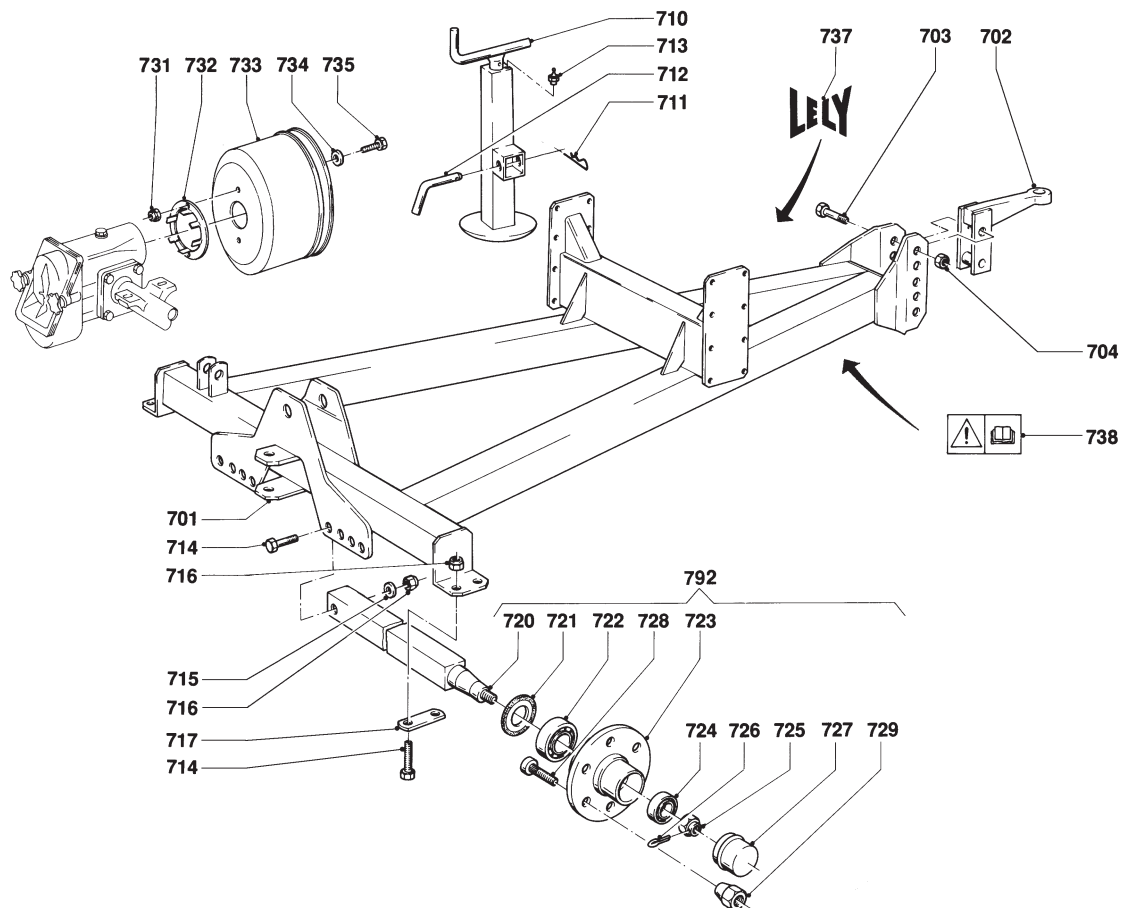
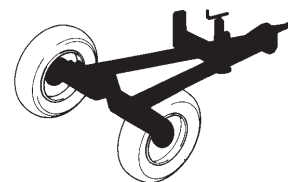
| | | |
|-----|---------------|---|
| 701 | 2.3218.2121.0 | 1 |
| 702 | 2.3215.2110.0 | 1 |
| 703 | 9.1113.0097*5 | 2 |
| 704 | 9.1030.0017*1 | 2 |
| 705 | 2.3218.2260.0 | 1 |
| | 2.3218.2250.0 | 1 |
| 706 | 9.1113.0118*5 | 8 |
| 707 | 9.1030.0013*4 | 8 |
| 708 | 9.1048.0044*3 | 6 |
| 709 | 9.1048.0012*6 | 8 |
| | | |
| 710 | 2.3218.2151.0 | 1 |
| 711 | 1.1624.1490.0 | 1 |
| 712 | 9.1124.0005*0 | 1 |
| 713 | 9.1069.0001*2 | 1 |
| 714 | 9.1113.0083*5 | 4 |
| | | |
| 715 | 9.1113.0158.3 | 2 |
| 716 | 9.1030.0014*5 | 6 |
| 717 | 2.3218.2165.0 | 2 |

| REF. | ONDERDEELNR. PART NUMBER REFERENCE TEILNUMMER | AANTAL QUANTITY QUANTITE ANZAHL |
|------|--|--|
|------|--|--|

| | | |
|-----|---------------|----------------|
| 720 | 9.1041.0200.5 | (1+1) |
| 721 | 9.1049.0025.4 | (1+1) |
| 722 | 9.1002.0026.3 | (1+1) |
| 723 | 9.1041.0005.6 | (1+1) |
| 724 | 9.1002.0002.0 | (1+1) |
| | | |
| 725 | 9.1031.0011.1 | (1+1) |
| 726 | 9.1072.0007.5 | (1+1) |
| 727 | 9.1041.0103.6 | (1+1) |
| 728 | 9.1114.0503.4 | (6+6) |
| 729 | 9.1036.0020.5 | (6+6) |
| | | |
| 792 | 2.3218.2169.0 | 2 |
| | | = REF. 720-729 |

LELY

| CENTERLINER | type number type number numéro de type Typnummer | vanaf serienummer as from serial number après numéro de série ab Seriennummer |
|-------------|---|--|
| S/SL-SE | 2.3218.2111.1 | 1000 - 0501 |
| S/SL-SE | 2.3218.2115.1 | 10511 - 0501 |



A033-03-01

| REF. | ONDERDEELNR. PART NUMBER REFERENCE TEILNUMMER | AANTAL QUANTITY QUANTITE ANZAHL |
|------|--|--|
|------|--|--|

| | | |
|-----|---------------|---|
| 701 | 2.3218.2121.0 | 1 |
| 702 | 2.3215.2110.0 | 1 |
| 703 | 9.1113.0474.1 | 2 |
| 704 | 9.1030.0043.6 | 2 |

| | | |
|-----|---------------|---|
| 710 | 2.3218.2151.0 | 1 |
| 711 | 9.1124.0005*0 | 1 |
| 712 | 1.1624.1490.0 | 1 |
| 713 | 9.1069.0001*2 | 1 |
| 714 | 9.1113.0473.0 | 6 |

| | | |
|-----|---------------|---|
| 715 | 9.1048.0085.2 | 2 |
| 716 | 9.1030.0034.4 | 6 |
| 717 | 2.3218.2165.0 | 2 |

| | | |
|-----|---------------|-----|
| 720 | # | 1+1 |
| 721 | # | 1+1 |
| 722 | 9.1002.0026.3 | 1+1 |
| 723 | # | 1+1 |
| 724 | 9.1002.0002.0 | 1+1 |
| 725 | 9.1031.0011.1 | 1+1 |
| 726 | 9.1072.0007.5 | 1+1 |
| 727 | 9.1041.0103.6 | 1+1 |
| 728 | 9.1114.0503.4 | 6+6 |
| 729 | 9.1036.0020.5 | 6+6 |

| REF. | ONDERDEELNR. PART NUMBER REFERENCE TEILNUMMER | AANTAL QUANTITY QUANTITE ANZAHL |
|------|--|--|
|------|--|--|

| | | |
|-----|---------------|---|
| 731 | 9.1030.0022.6 | 2 |
| 732 | 2.3215.1487.0 | 1 |
| 733 | 1.1636.1049.0 | 1 |
| 734 | 9.1048.0062*0 | 2 |
| 735 | 9.1113.0170.1 | 2 |

| | | |
|-----|---------------|---|
| 737 | 9.1170.0003.1 | 1 |
| 738 | 9.1170.0408.0 | 1 |

| | | |
|-----|---------------|---|
| 792 | 2.3218.2169.0 | 2 |
|-----|---------------|---|

M10 DIN 985-A2-2

M20x120 DIN 931-A2-2

M20 DIN 985-A2-2

A10,5 DIN 7349

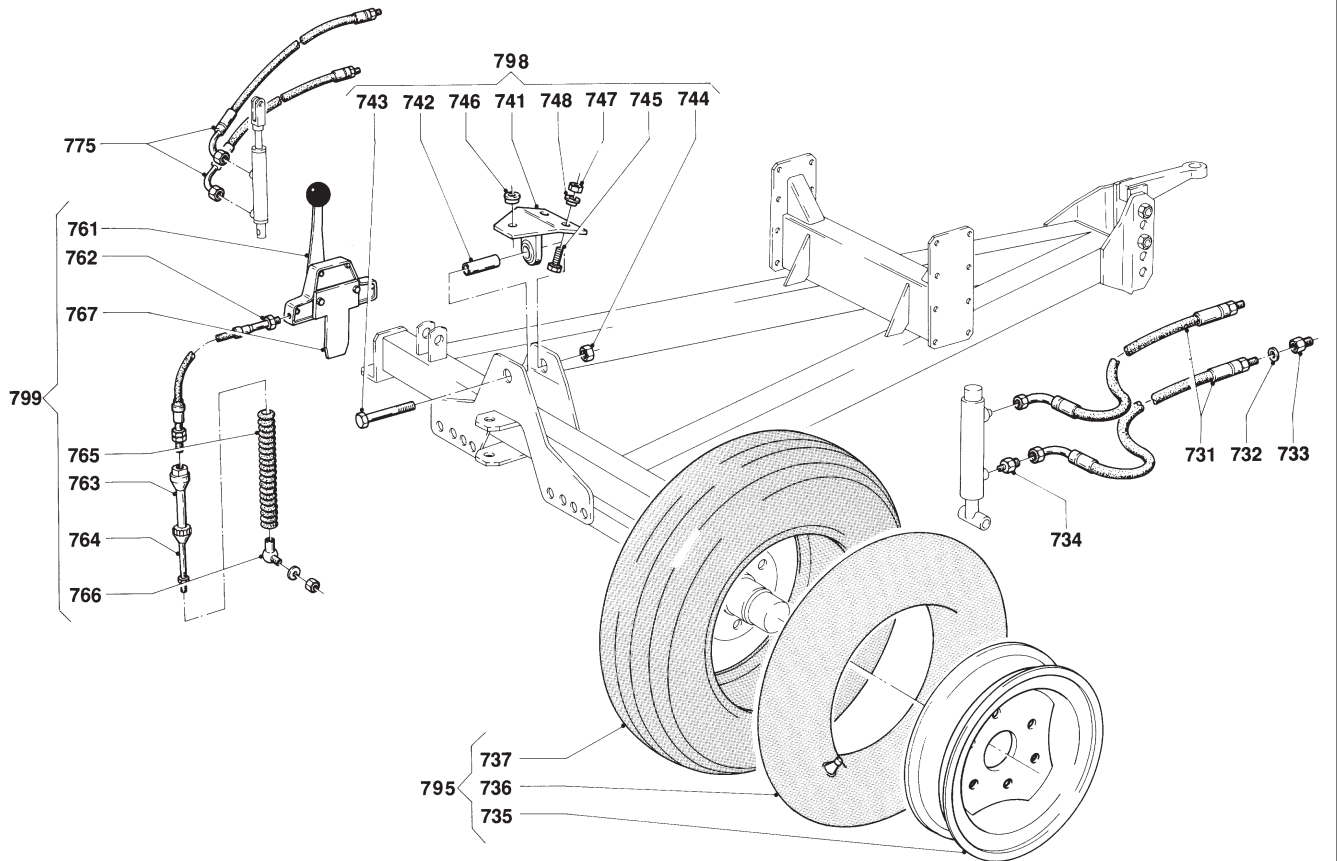
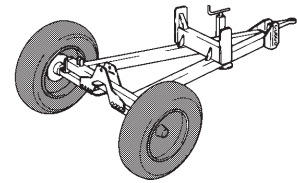
M10x25 DIN 933-A2-2

[]

= REF. 720-729

LELY

| CENTERLINER | type number type number numéro de type Typnummer | vanaf serienummer as from serial number après numéro de série ab Seriennummer |
|-------------|---|--|
| | 2.3218.2111.1 | 952 - 0525 |



| REF. | ONDERDEELNR. PART NUMBER REFERENCE TEILNUMMER | AANTAL QUANTITY QUANTITE ANZAHL | |
|------|--|--|--|
|------|--|--|--|

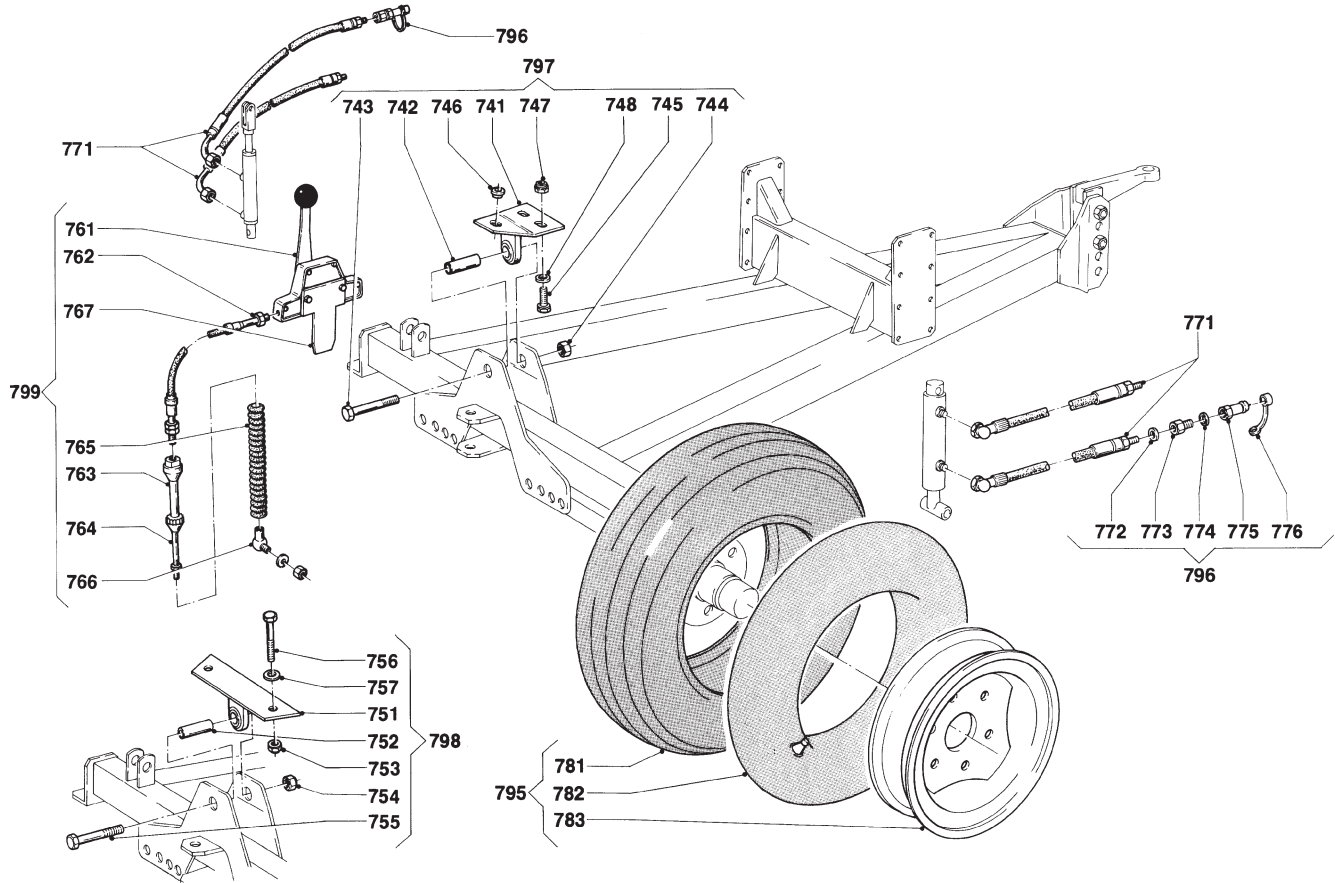
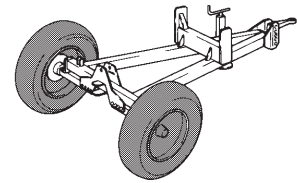
| | | | |
|-----|---------------|-----|----------------------|
| 731 | 2.2301.2391.0 | 2 | L= 3000 mm |
| 732 | 9.1137.0401.5 | - | Ø14x20x1,5 Cu |
| 733 | 9.1137.0606.0 | - | 3/8" - 1/4" |
| | 9.1137.0603.4 | - | 1/2" - 1/4" |
| | 9.1137.0608.2 | - | 1/4" - M22x1,5 |
| | 9.1137.0604.5 | - | 1/4" - M18x1,5 |
| 734 | 9.1137.0605.6 | 1 | 3/8" - 1/4" |
| 735 | 9.1102.0017.6 | 1+1 | 11x16 |
| 736 | 9.1111.0007.1 | 1+1 | 13,00x16 |
| 737 | 9.1110.0009.4 | 1+1 | 13,00x16 6 ply spec. |
| 741 | 2.3218.2290.0 | 1 | CENTERLINER S/SL [x] |
| | 2.3218.2300.0 | 1 | CB + CB3000F + CL |
| 742 | 2.3218.2319.0 | 1 | |
| 743 | 9.1113.0248*2 | 1 | M20x160 DIN 931-8.8 |
| 744 | 9.1030.0017*1 | 1 | M20 DIN 985-8 |
| 745 | 9.1113.0111*5 | 2 | M16x45 DIN 933-8.8 |
| | 9.1113.0121*1 | 1 | M16x50 DIN 933-8.8 |
| 746 | 2.3218.2318.0 | 1 | [—] |
| 747 | 9.1030.0014*5 | 3 | M16 DIN 985-8 |
| 748 | 2.3218.2317.0 | 2 | [—] |

| REF. | ONDERDEELNR. PART NUMBER REFERENCE TEILNUMMER | AANTAL QUANTITY QUANTITE ANZAHL | |
|------|--|--|--|
|------|--|--|--|

| | | | |
|-----|---------------|---|--|
| 761 | 9.1180.0806.3 | 1 | |
| 762 | 9.1180.0811.1 | 1 | L= 3800 mm |
| 763 | 9.1180.0803.0 | 1 | |
| 764 | 9.1180.0812.2 | 1 | M6 L= 3800 mm |
| 765 | 9.1180.0802.6 | 1 | |
| 766 | 9.1180.0801.5 | 1 | M6 |
| 767 | 9.1180.0807.4 | 1 | |
| 775 | 2.2301.2391.0 | 2 | L= 3000 mm |
| 795 | 9.1175.0012.5 | 2 | = REF. 735-737 Ø890 x 340 mm |
| 797 | 2.3218.2270.0 | 1 | = REF. 741-747 CENTERLINER S/SL [x] |
| 798 | 2.3218.2280.0 | 1 | = REF. 741-748 CB + CB3000F + CL |
| 799 | 9.1180.0810.0 | 1 | = REF. 761-767 L=3800 mm |

LELY

| CENTERLINER | type number type number numéro de type Typnummer | vanaf serienummer as from serial number après numéro de série ab Seriennummer |
|-------------|---|--|
| | 2.3218.2111.1 | 1000 - 0501 |



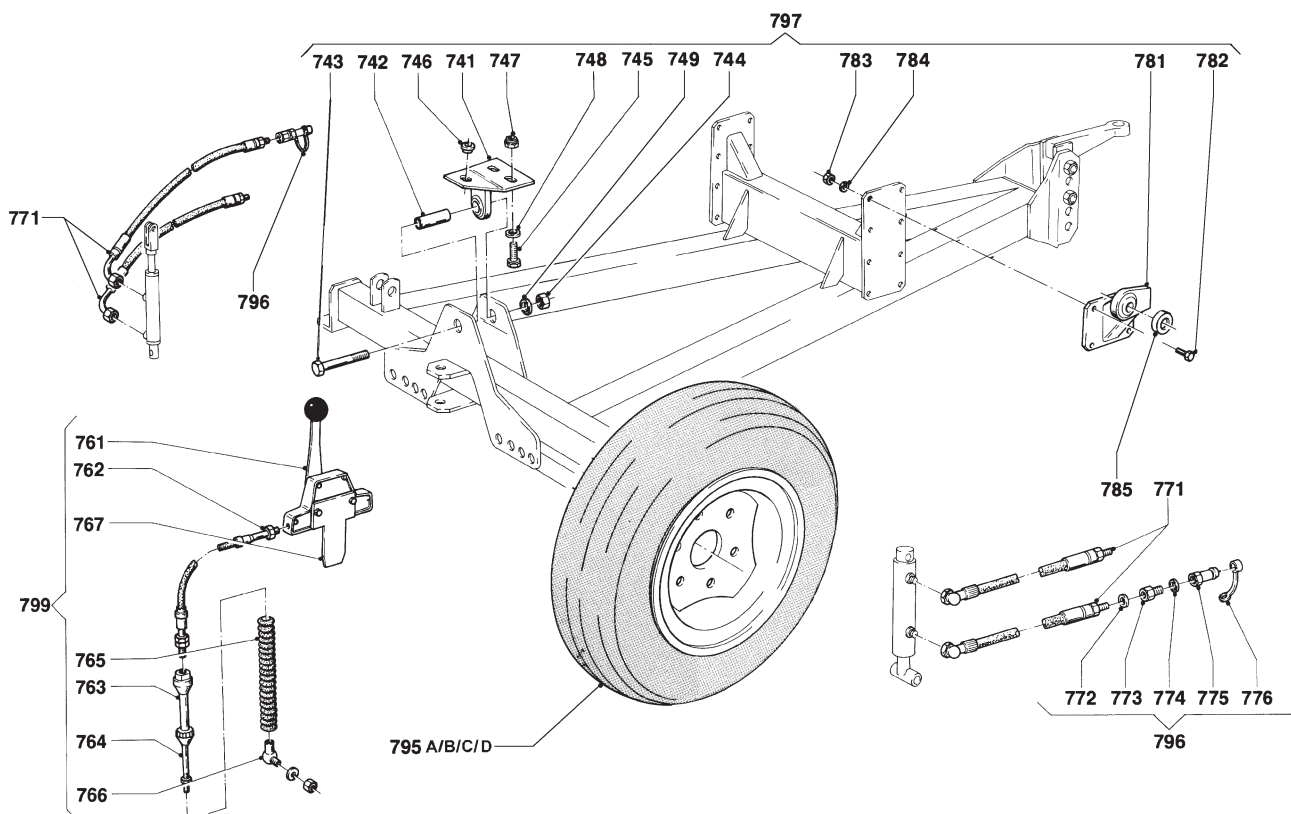
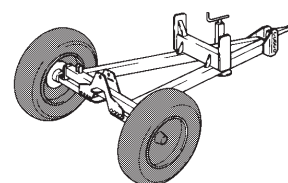
A038-02-00

| REF. | ONDERDEELNR. PART NUMBER REFERENCE TEILNUMMER | AANTAL QUANTITY QUANTITE ANZAHL | |
|------|--|--|---------------------|
| 741 | 2.3218.2290.0 | 1 | CENTERLINER S/SL |
| 742 | 2.3218.2319.0 | 1 | |
| 743 | 9.1113.0248*2 | 1 | M20x160 DIN 931-8.8 |
| 744 | 9.1030.0017*1 | 1 | M20 DIN 985-8 |
| 745 | 9.1113.0111*5 | 2 | M16x45 DIN 933-8.8 |
| | 9.1113.0121*1 | 1 | M16x50 DIN 933-8.8 |
| 746 | 2.3218.2318.0 | 1 | [] |
| 747 | 9.1030.0014*5 | 3 | M16 DIN 985-8 |
| 748 | 9.1048.0015*2 | 3 | A17 DIN 125 [] |
| 751 | 2.3226.1261.0 | 1 | CENTERLINER SE |
| 752 | 2.3218.2319.0 | 1 | |
| 753 | 9.1030.0034.4 | 2 | M16 DIN 985-A2-2 |
| 754 | 9.1030.0017*1 | 1 | M20 DIN 985-8 |
| 755 | 9.1113.0248*2 | 1 | M20x160 DIN 931-8.8 |
| 756 | 9.1113.0263*3 | 2 | M16x100 DIN 931-8.8 |
| 757 | 9.1048.0096*6 | 2 | 17 DIN 7349 [] |
| 761 | 9.1180.0806.3 | 1 | |
| 762 | 9.1180.0811.1 | 1 | L= 3800 mm |
| 763 | 9.1180.0803.0 | 1 | |
| 764 | 9.1180.0812.2 | 1 | L= 3800 mm M6 |
| 765 | 9.1180.0802.6 | 1 | |
| 766 | 9.1180.0801.5 | 1 | M6 |
| 767 | 9.1180.0807.4 | 1 | |
| 771 | 4.1016.2120.0 | 2 (+2) | L= 3050 mm |

| REF. | ONDERDEELNR. PART NUMBER REFERENCE TEILNUMMER | AANTAL QUANTITY QUANTITE ANZAHL | |
|-------|--|--|---|
| 772 | 9.1137.0401.5 | 2 (+2) | Ø14x20x1,5 Cu [] |
| 773 | 9.1137.0603.4 | 2 (+2) | 1/2"-1/4" [] |
| 774 | 9.1137.0402.6 | 2 (+2) | Ø22x29x1,5 Cu [] |
| 775 | 9.1137.0302.4 | 2 (+2) | 1/2" G |
| 776 | 9.1137.0303.5 | 2 (+2) | 1/2" PVC |
| 781 A | 9.1110.0009.4 | (1+1) | 13,00x16 - 6 ply spec. |
| 782 A | 9.1111.0007.1 | (1+1) | 13,00x16 |
| 783 A | 9.1102.0017.6 | (1+1) | 11x16 |
| 781 B | 9.1110.0022.3 | (1+1) | 31x15,50 - 15 [x] |
| 782 B | - | - | (Tubeless) |
| 783 B | 9.1102.0022.4 | (1+1) | 13x15 |
| 795 A | 9.1175.0012.5 | 2 | = REF. 781A-783A Ø890 x 350 mm / 1 bar |
| 795 B | 9.1175.0020.6 | 2 | = REF. 781B+783B [x] Ø792 x 368 mm / 1.4 bar |
| 796 | 2.3201.2312.8 | 2 (+2) | = REF. 772-776 |
| 797 | 2.3218.2270.0 | 1 | = REF. 741-748 - S/SL |
| 798 | 2.3226.1251.0 | 1 | = REF. 751-757 - SE |
| 799 | 9.1180.0810.0 | 1 | = REF. 761-767 L= 3800 mm |

LELY

| CENTERLINER | type number type number numéro de type Typnummer | vanaf serienummer as from serial number après numéro de série ab Seriennummer |
|-------------|---|--|
| S/SL | 2.3218.2111.1 | 1000 - 0501 |
| S/SL | 2.3218.2115.1 | 10511 - 0501 |



A038-02-10

| REF. | ONDERDEELNR. PART NUMBER REFERENCE TEILNUMMER | AANTAL QUANTITY QUANTITE ANZAHL |
|------|--|--|
|------|--|--|

| | | |
|-----|---------------|---|
| 741 | 2.3218.2290.0 | 1 |
| 742 | 2.3218.2319.0 | 1 |
| 743 | 9.1113.0471.5 | 1 |
| 744 | 9.1029.0049.4 | 1 |
| 745 | 9.1113.0339.1 | 3 |
| 746 | 2.3218.2318.0 | 1 |
| 747 | 9.1030.0034.4 | 3 |
| 748 | 9.1048.0085.2 | 3 |
| 749 | 9.1121.0027.4 | 1 |

| | | |
|-----|---------------|---|
| 761 | 9.1180.0806.3 | 1 |
| 762 | 9.1180.0811.1 | 1 |
| 763 | 9.1180.0803.0 | 1 |
| 764 | 9.1180.0812.2 | 1 |
| 765 | 9.1180.0802.6 | 1 |
| 766 | 9.1180.0801.5 | 1 |
| 767 | 9.1180.0807.4 | 1 |

| | | |
|-----|---------------|-----|
| 771 | 4.1016.2120.0 | 2+2 |
| 772 | 9.1137.0409.6 | 2+2 |
| 773 | 9.1137.0603.4 | 2+2 |
| 774 | 9.1137.0411.1 | 2+2 |
| 775 | 9.1137.0302.4 | 2+2 |
| 776 | 9.1137.0303.5 | 2+2 |

| REF. | ONDERDEELNR. PART NUMBER REFERENCE TEILNUMMER | AANTAL QUANTITY QUANTITE ANZAHL |
|------|--|--|
|------|--|--|

| | | |
|-----|---------------|---|
| 781 | 2.3218.2260.0 | 1 |
| 782 | 2.3218.2250.0 | 1 |
| 783 | 9.1113.0337.6 | 8 |
| 784 | 9.1030.0023.0 | 8 |
| 785 | 2.3225.2167.0 | 2 |

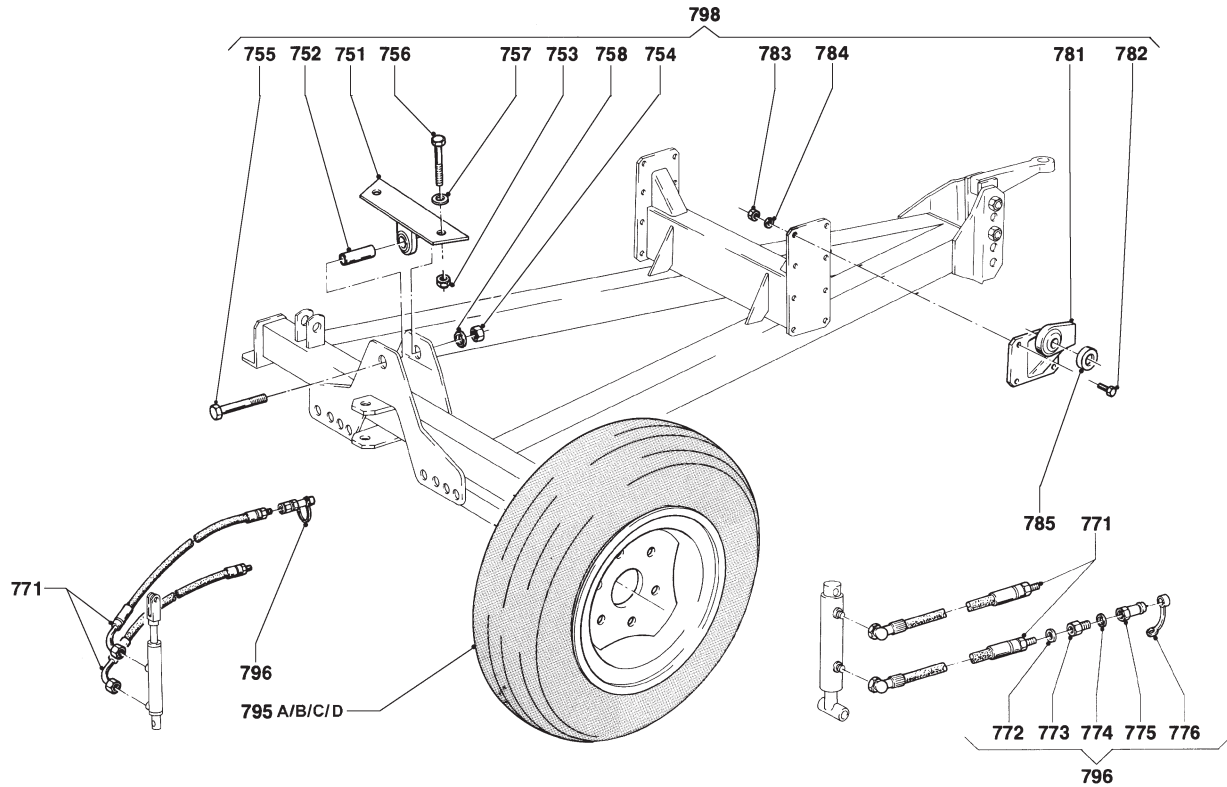
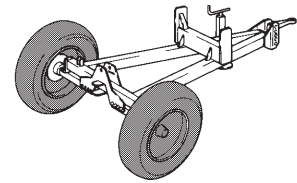
| | | |
|-------|---------------|-------|
| 795 A | 9.1175.0012.5 | (2) |
| 795 B | 9.1175.0020.6 | (2) |
| 795 C | 9.1175.0021.0 | 2 |
| 795 D | 9.1175.0018.4 | (2) |
| 796 | 2.3201.2312.8 | 2(+2) |
| 797 | 2.3218.2271.0 | 1 |
| 799 | 9.1180.0810.0 | 1 |

[R]
[L][x]
M12x40 DIN 933-A2-2
M12 DIN 985-A2-2
A13 DIN 125-A2 [—]

Ø890 x 350 mm / 1 bar [x]
Ø792 x 368 mm / 1.4 bar [x]
Ø760 x 270 mm / 2.25 bar
Ø875 x 400 mm / 2 bar [x]
= REF. 772-776
= REF. (741-749)+(781-784)
= REF. 761-767 L= 3800 mm

LELY

| CENTERLINER | type number type number numéro de type Typnummer | vanaf serienummer as from serial number après numéro de série ab Seriennummer |
|-------------|---|--|
| SE | 2.3218.2111.1 | 1000 - 0501 |
| SE | 2.3218.2115.1 | 10511 - 0501 |



A038-02-20

| REF. | ONDERDEELNR. PART NUMBER REFERENCE TEILNUMMER | AANTAL QUANTITY QUANTITE ANZAHL | |
|------|--|--|--|
|------|--|--|--|

| | | | |
|-----|---------------|---|----------------------|
| 751 | 2.3226.1261.0 | 1 | |
| 752 | 2.3218.2319.0 | 1 | |
| 753 | 9.1030.0034.4 | 2 | M16 DIN 985-A2-2 |
| 754 | 9.1029.0049.4 | 1 | M20 DIN 934-A2-2 |
| 755 | 9.1113.0471.5 | 1 | M20x160 DIN 931-A2-2 |
| 756 | 9.1113.0473.0 | 2 | M16x100 DIN 931-A2-2 |
| 757 | 9.1048.0096.6 | 2 | 17 DIN 7349-A2 [—] |
| 758 | 9.1127.0027.4 | 1 | A20 DIN 127-A2 [—/—] |

| | | | |
|-----|---------------|-----|-----------------------|
| 771 | 4.1016.2120.0 | 2+2 | L= 3050 mm |
| 772 | 9.1137.0409.6 | 2+2 | Ø13,74x20,57x2,03 [—] |
| 773 | 9.1137.0603.4 | 2+2 | 1/2"-1/4" |
| 774 | 9.1137.0411.1 | 2+2 | Ø21,54x28,58x2,34 [—] |
| 775 | 9.1137.0302.4 | 2+2 | 1/2" G |
| 776 | 9.1137.0303.5 | 2+2 | 1/2" PVC |

| | | | |
|-----|---------------|---|---------------------|
| 781 | 2.3218.2260.0 | 1 | [R] |
| | 2.3218.2250.0 | 1 | [L][x] |
| 782 | 9.1113.0337.6 | 8 | M12x40 DIN 933-A2-2 |
| 783 | 9.1030.0023.0 | 8 | M12 DIN 985-A2-2 |
| 784 | 9.1048.0080.4 | 8 | A13 DIN 125-A2 [—] |
| 785 | 2.3225.2167.0 | 2 | |

| REF. | ONDERDEELNR. PART NUMBER REFERENCE TEILNUMMER | AANTAL QUANTITY QUANTITE ANZAHL | |
|------|--|--|--|
|------|--|--|--|

| | | | |
|-------|---------------|-------|-----------------------------|
| 795 A | 9.1175.0012.5 | (2) | Ø890 x 350 mm / 1 bar [x] |
| 795 B | 9.1175.0020.6 | (2) | Ø792 x 368 mm / 1.4 bar [x] |
| 795 C | 9.1175.0021.0 | 2 | Ø760 x 270 mm / 2.25 bar |
| 795 D | 9.1175.0018.4 | (2) | Ø875 x 400 mm / 2 bar [x] |
| 796 | 2.3201.2312.8 | 2(+2) | = REF. 772-776 |
| 798 | 2.3226.1252.0 | 1 | = REF. (751-758)+(781-784) |

LELY

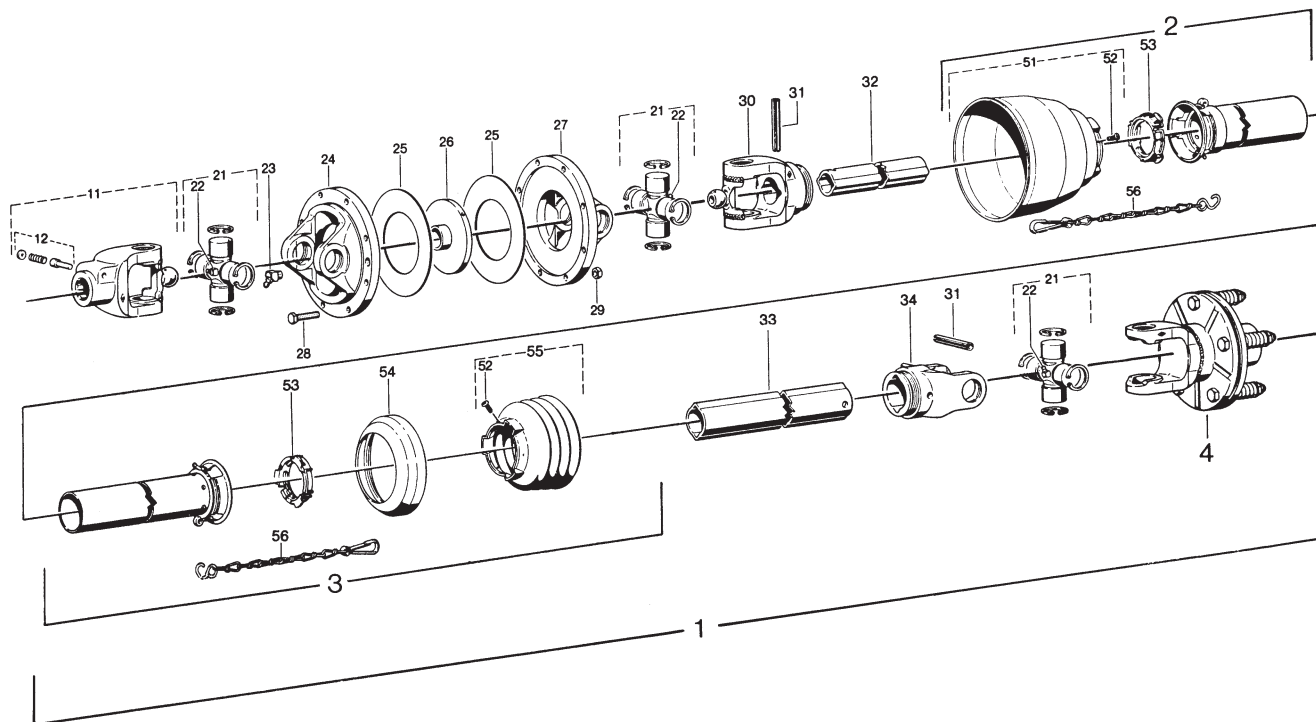
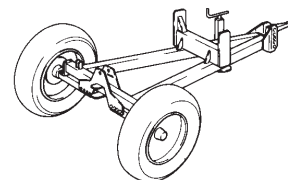
CENTERLINER

type number
type number
numéro de type
Typnummer

2.3218.2111.1

vanaf serienummer
as from serial number
après numéro de série
ab Seriennummer

952 - 0525



Aw005-02-00

| REF. | ONDERDEELNR. PART NUMBER REFERENCE TEILNUMMER | AANTAL QUANTITY QUANTITE ANZAHL | |
|------|--|--|--|
|------|--|--|--|

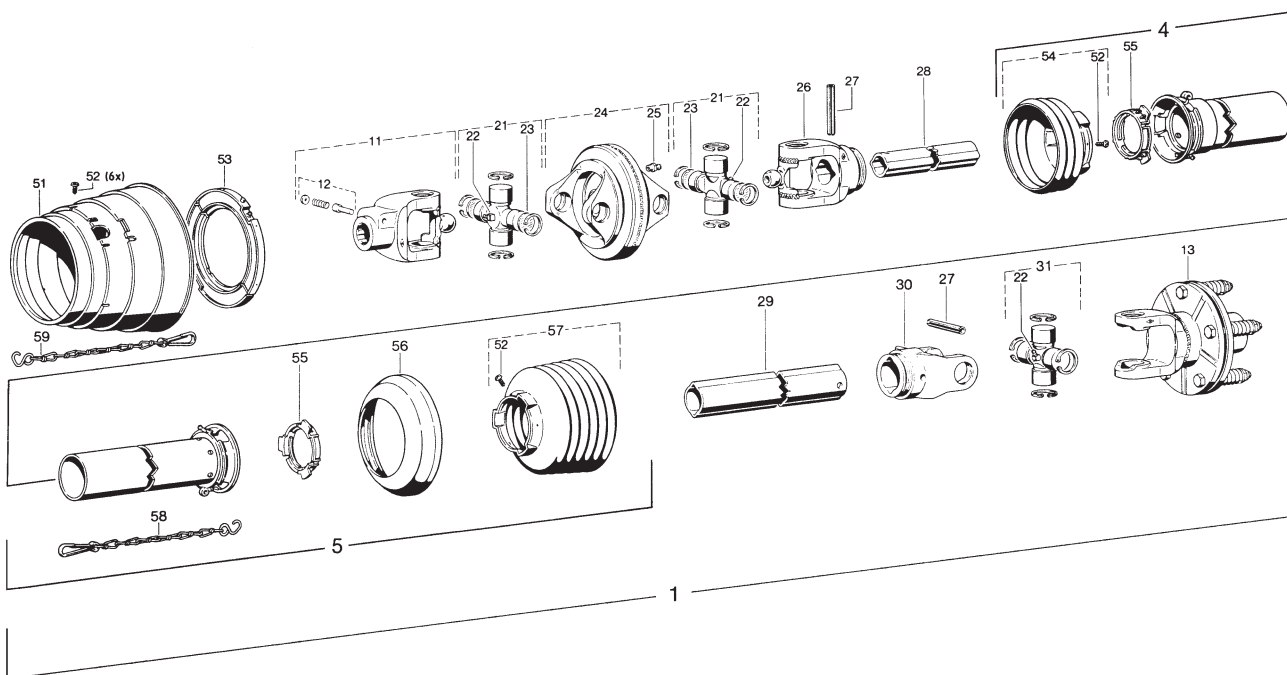
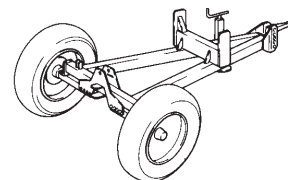
| | | | |
|----|---------------|---|------------------------------------|
| 1 | 9.1154.0118.6 | 1 | WWE2200-SD15-1410mm = REF. 2-56 |
| 2 | 85.002 | 1 | SCH 15 |
| 3 | 85.004 | 1 | SCH 15 |
| 4 | 56.102.19 | 1 | K94/1- 1.1/8" (6)- 400Nm. |
| 11 | 20.10.10 | 1 | 1.3/8" (6) |
| 12 | 339107 | 1 | Agraset 101 |
| 21 | 20.00.00 | 3 | |
| 22 | 63.27.00 | 3 | M8x1 |
| 23 | 63.22.01 | 1 | BM8x1-45° |
| 24 | 20.41.00 | 1 | |
| 25 | 60.68.02 | 2 | |
| 26 | 90.02.01 | 1 | |
| 27 | 20.41.01 | 1 | |
| 28 | 9.1113.0152.4 | 1 | M6x30 DIN 933-8.8 |
| 29 | 9.1029.0002.1 | 1 | M6 DIN 934 |
| 30 | 20.11.10 | 1 | |
| 31 | 61.05.04 | 2 | 10x65 DIN 1481 |
| 32 | 75.11.96 | 1 | Ov GA |
| 33 | 75.16.16 | 1 | 1G |
| 34 | 20.12.00 | 1 | 1G |
| 51 | 85.15.50 | 1 | |
| 52 | 60.15.00 | 2 | 4x10 |
| 53 | 82.83.06 | 2 | |
| 54 | 82.50.00 | 1 | |
| 55 | 85.15.04 | 2 | |

| REF. | ONDERDEELNR. PART NUMBER REFERENCE TEILNUMMER | AANTAL QUANTITY QUANTITE ANZAHL | |
|------|--|--|--|
|------|--|--|--|

| | | | |
|----|----------|---|--|
| 56 | 82.36.03 | 2 | |
|----|----------|---|--|

LELY

| CENTERLINER | type number type number numéro de type Typnummer | vanaf serienummer as from serial number après numéro de serie ab Seriennummer |
|-------------|---|--|
| S/SL-SE | 2.3218.2111.1 | 1000 - 0501 |
| S/SL-SE | 2.3218.2115.1 | 10511 - 0501 |



Aw005-03-01

| REF. | ONDERDEELNR. PART NUMBER REFERENCE TEILNUMMER | AANTAL QUANTITY QUANTITE ANZAHL | |
|------|--|--|---|
| 1 | 9.1154.0118.6 | 1 | WWE2280-SD15-1410-K94/1 = REF. 11-59 |
| 4 | 85.102 | 1 | SCH15-A1300-RP2 |
| 5 | 85.104 | 1 | SCH15-J1300-RP6-K |
| 11 | 20.10.810 | 1 | 1.3/8" (6) |
| 12 | 33.91.07 | 1 | AGRASET 101 |
| 13 | 56.115.19 | 1 | K94/1- 1.1/8" (6); M= 400Nm. |
| 21 | 20.06.00 | 2 | Cpl. |
| 22 | 63.27.00 | 3 | BM8x1 |
| 23 | 20.06.70 | 4 | 21,95x2 |
| 24 | +20.91.05 | 1 | |
| 25 | 63.12.01 | 1 | AM8x1 |
| 26 | 20.11.810 | 1 | RG2280-Ov |
| 27 | 61.05.04 | 2 | 10x65 DIN 1481 |
| 28 | 75.11.96 | 1 | OvGA-1220 |
| 29 | 75.16.16 | 1 | 1G-1210 |
| 30 | 20.12.00 | 1 | RG2200-1 |
| 31 | 20.00.00 | 1 | Cpl. |

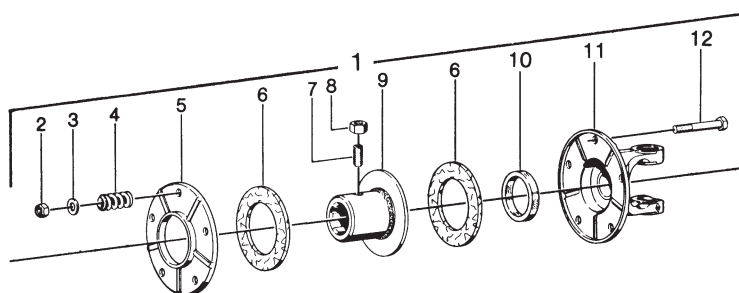
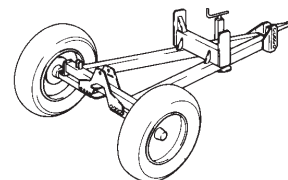
| REF. | ONDERDEELNR. PART NUMBER REFERENCE TEILNUMMER | AANTAL QUANTITY QUANTITE ANZAHL | |
|------|--|--|------|
| 51 | 85.00.00 | 1 | |
| 52 | 60.15.00 | 8 | 4x10 |
| 53 | 82.83.12 | 1 | |
| 54 | 85.14.106 | 1 | n= 2 |
| 55 | 82.83.06 | 2 | |
| 56 | 82.85.00 | 1 | |
| 57 | 85.15.05 | 1 | n= 5 |
| 58 | 82.36.03 | 1 | 400 |
| 59 | 82.36.08 | 1 | 600 |

LELY

| CENTERLINER | type number type number numéro de type Typnummer | vanaf serienummer as from serial number après numéro de serie ab Seriennummer |
|-------------|---|--|
| | 2.3218.2111.1 | 952 - 0525 |

2.3218.2111.1

952 - 0525



Aw002-02-00

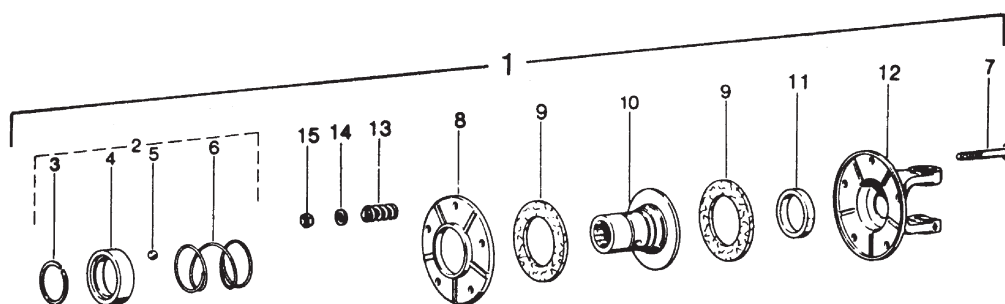
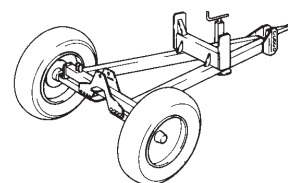
| REF. | ONDERDEELNR. PART NUMBER REFERENCE TEILNUMMER | AANTAL QUANTITY QUANTITE ANZAHL | |
|------|--|--|--|
|------|--|--|--|

| | | | |
|----|---------------|---|--|
| 1 | 56.102.19 | 1 | K94/1- 2200 1.1/8" (6); M=400Nm. = REF. 2-12 |
| 2 | 9.1030.0012*3 | 5 | M8 DIN 985-8 |
| 3 | 9.1048.0004*5 | 5 | B8.4 DIN 125 [—] |
| 4 | 66.01.47 | 5 | |
| 5 | 16.20.69 | 1 | |
| 6 | 56.73.07 | 2 | |
| 7 | 60.05.51 | 1 | M10x20 DIN 913-8.8 |
| 8 | 60.52.00 | 1 | M10 DIN934 |
| 9 | 16.50.413 | 1 | 1.1/8" (6) |
| 10 | 16.52.05 | 1 | |
| 11 | 20.15.179 | 1 | |
| 12 | 9.1113.0175*6 | 5 | M8x60 DIN 931-8.8 |

| REF. | ONDERDEELNR. PART NUMBER REFERENCE TEILNUMMER | AANTAL QUANTITY QUANTITE ANZAHL | |
|------|--|--|--|
|------|--|--|--|

LELY

| CENTERLINER | type number type number numéro de type Typnummer | vanaf serienummer as from serial number après numéro de serie ab Seriennummer |
|-------------|---|--|
| S/SL-SE | 2.3218.2111.1 | 952 - 0525 |
| S/SL-SE | 2.3218.2115.1 | 10511 - 0501 |



Aw002-03-00

| REF. | ONDERDEELNR. PART NUMBER REFERENCE TEILNUMMER | AANTAL QUANTITY QUANTITE ANZAHL | |
|------|--|--|--|
|------|--|--|--|

| | | | |
|----|---------------|-----|--|
| 1 | 56.115.19 | (1) | K94/1-2200 1.1/8" (6); 400 Nm = REF. 3-15 |
| 2 | 19.36.58 | 1 | AGRASET 140 = REF. 3-6 |
| 3 | 62.07.04 | 1 | SW43 |
| 4 | 16.50.493 | 1 | 43x58 |
| 5 | 64.01.00 | 3 | 3/8"-5 DIN 5401 |
| 6 | 66.01.55 | 1 | |
| 7 | 9.1113.0175*6 | 5 | M8x60 DIN 931 |
| 8 | 16.20.69 | 1 | |
| 9 | 56.73.13 | 2 | 56x90 |
| 10 | 16.50.494 | 1 | 1.1/8" (6) |
| 11 | 16.52.05 | 1 | 43x53 |
| 12 | 20.15.179 | 1 | K94/1-2200 |
| 13 | 66.01.47 | 5 | |
| 14 | 9.1048.0004*5 | 5 | B8,4 DIN 125 [—] |
| 15 | 9.1030.0012*3 | 5 | M8 DIN 985 |

| REF. | ONDERDEELNR. PART NUMBER REFERENCE TEILNUMMER | AANTAL QUANTITY QUANTITE ANZAHL | |
|------|--|--|--|
|------|--|--|--|