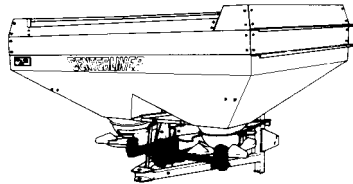


LELY**CENTERLINER**type nummer
type number
numéro de type
Typnummervanaf serienummer
as from serial number
après numéro de série
ab Seriennummer

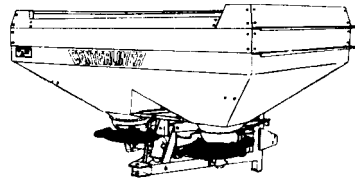
CB - S

2.3219.0001.1

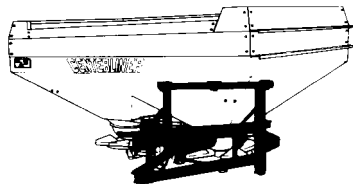
960 - 0501

CB**Inhoud
Contents
Index
Inhalt****CENTERLINER CB - S****pagina
page
page
Seite**Aandrijving
Transmission
Entraînement
Antrieb

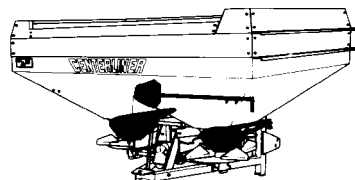
01

Werpschijven
Ejector discs
Disques éjecteurs
Wurfscheiben

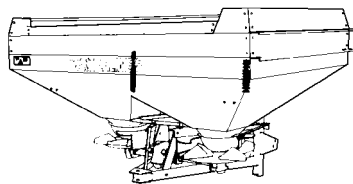
02

Freem
Frame
Châssis
Rahmen

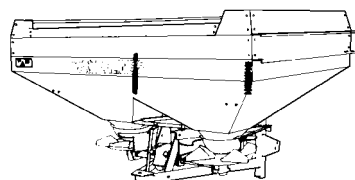
03

Dosering
Feed system
Ensemble de dosage
Dosiervorrichtung

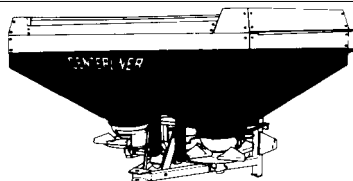
04

Bedieningskabel
Command cable
Câble de commande
Bedienungskabel

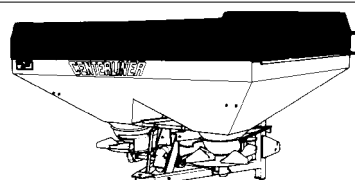
05

Hydraulische bediening
Hydraulic command
Commande hydraulique
Hydraulische Bedienung

05

Vorraadbak
Hopper
Trémie
Behälter

06

Opzetrand
Hopper extension
Rehausse de trémie
Behälteraufsatz

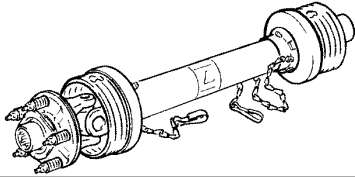
07

LELY**CENTERLINER**type number
type number
numéro de type
Typnummervanaf serienummer
as from serial number
après numéro de serie
ab Seriennummer

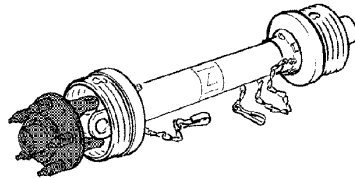
CB - S

2.3219.0001.1

960 - 0501

CB**Inhoud
Contents
Index
Inhalt****CENTERLINER CB - S****pagina
page
page
Seite**Koppelingsas
PTO shaft
Arbre de transmission
Gelenkwelle

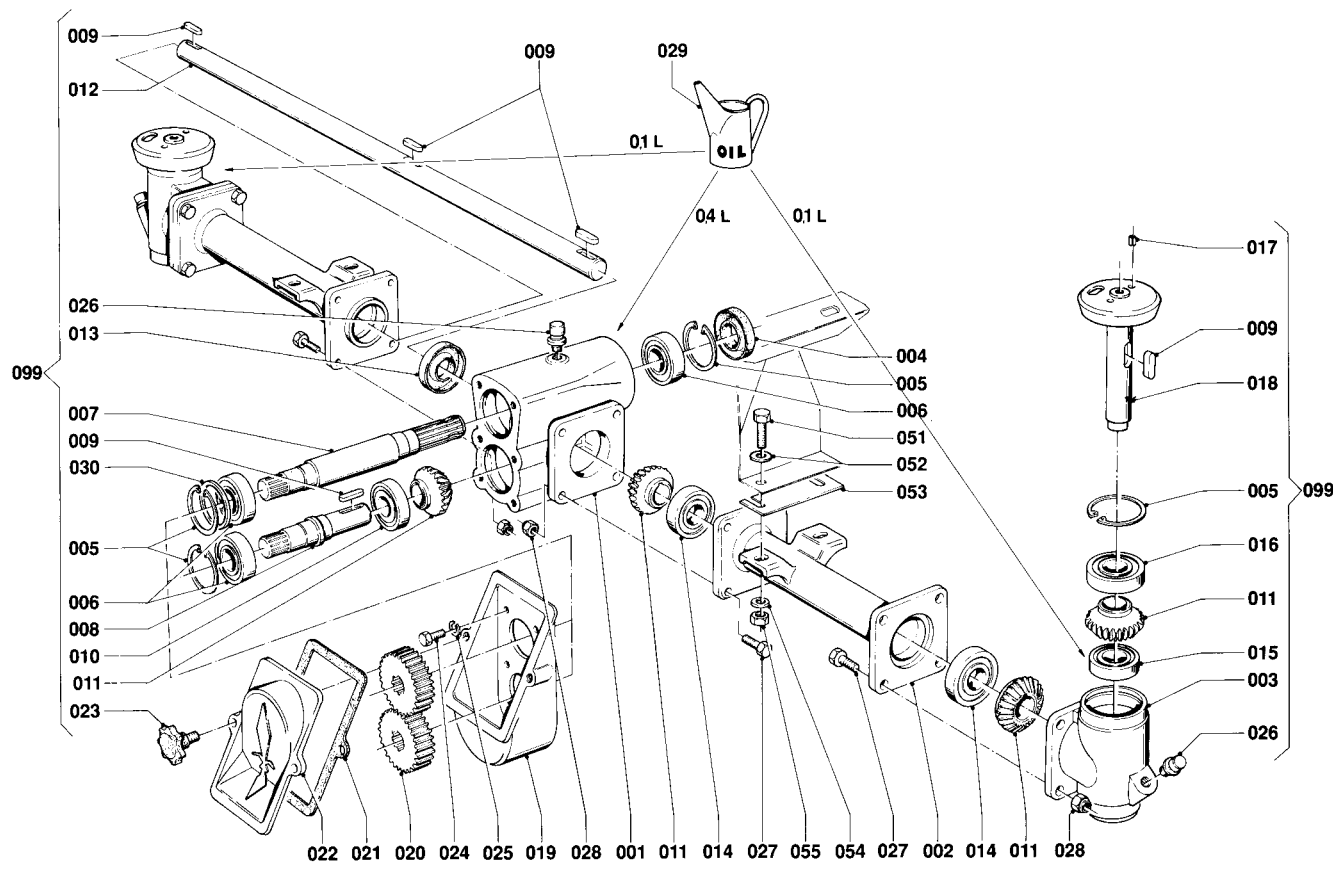
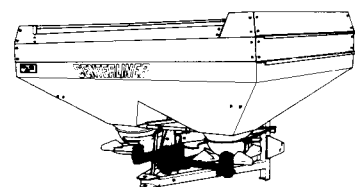
08

Slipkoppeling
Friction clutch
Limiteur à friction
Reibkupplung

09



CENTERLINER	type nummer type number numéro de type Typnummer	vanaf serienummer as from serial number après numéro de serie ab Seriennummer
CB - S	2.3219.0001.1	948 - 0501



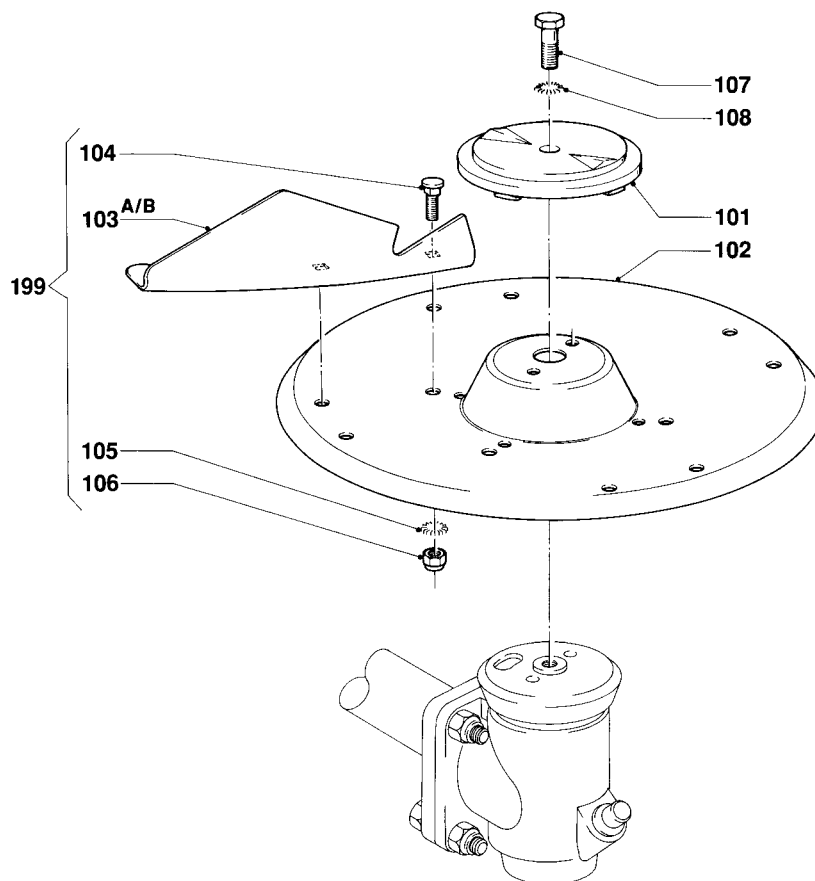
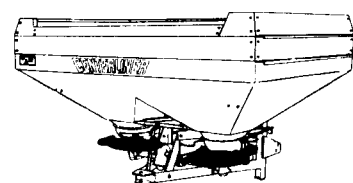
A001-05-00

REF.	ONDERDEELNR. PART NUMBER REFERENCE TEILNUMMER	AANTAL QUANTITY QUANTITE ANZAHL		
001	2.3217.0017.0	1		
002	2.3217.0018.0	2		
003	2.3217.0025.0	2		
004	9.1042.0007.0	1	30x62x10 B2	[> <]
005	9.1120.0005.4	5	62x2 DIN 472	
006	9.1001.0062.5	3	6206-C4	
007	2.3217.0021.0	1	1.1/8" (6)	
008	2.3217.0022.0	1		
009	9.1071.0009.1	6	A8x7x32 DIN 6885	
010	9.1001.0063.6	1	6305-C4	
011	2.3217.0024.0	6		
012	2.3217.0023.0	1		
013	9.1042.0054.5	1	25x62x10 CB	[> <]
014	9.1001.0061.4	3	6305-2 RS	
015	9.1001.0071.0	2	6304-C4	
016	9.1001.0075.4	2	6305-2RS-1-C3	
017	9.1070.0050.1	4	Ø8x20 DIN 1481	
018	2.3218.0019.0	2		
019	2.3217.0019.0	1		
020	2.3217.0027.1	1	Z= 12/23	[T+T]
	2.3217.0029.1	-	Z= 13/22	[T+T]
	2.3217.0031.1	-	Z= 14/21	[T+T]
	2.3217.0033.1	-	Z= 15/20	[T+T]
	2.3217.0035.1	-	Z= 16/19	[T+T]
	2.3217.0037.1	-	Z= 17/18	[T+T]

REF.	ONDERDEELNR. PART NUMBER REFERENCE TEILNUMMER	AANTAL QUANTITY QUANTITE ANZAHL		
021	2.3217.0026.0	1		
022	2.3217.0020.0	1		
023	9.1141.0009.1	2	M10x35 DIN 6336	
024	9.1113.0013.5	6	M8x16 DIN 933-8.8	
025	9.1121.0010.1	6	A8 DIN 127	[/_/]
026	1.1606.0022.0	3		
027	9.1113.0130.3	16	M8x30 DIN 933-8.8	
028	9.1030.0012*3	16	M8 DIN 985-8	
029	9.1171.0044.6	(0,6 L)	0,7L ESSO GP 80W90	
030	9.1093.0035.5	-	50x62x0,3 DIN 988 (max. 1x)	
051	9.1113.0189*6	4	M10x35 DIN 933-8.8	
052	9.1048.0059*4	8	A10,5 DIN 125	[_/_/]
053	2.3217.1481.0	-	d= 0,5 mm	
	2.3217.1482.0	-	d= 1 mm	
	2.3217.1488.0	-	d= 2 mm	
	2.3217.1483.0	-	d= 4 mm	
054	9.1048.0062*0	4	A10 DIN 7349	[_/_/]
055	9.1030.0022.6	4	M10 DIN 985-A2-2	
099	2.3218.0010.0	1	= REF. 001-030	



CENTERLINER	type number type number numéro de type Typnummer	vanaf serienummer as from serial number après numéro de série ab Seriennummer
CB - S	2.3219.0001.1	916 - 0501



A035-02-01

REF.	ONDERDEELNR. PART NUMBER REFERENCE TEILNUMMER	AANTAL QUANTITY QUANTITE ANZAHL
------	--	--

101	2.3218.1493.0	2
102	2.3218.1495.0	2
103A	2.3218.1497.0	4 [R]
	2.3218.1496.0	4 [L][x]
104	9.1058.0036*6	16 M8x16 DIN 603-8.8
105	9.1051.0007.5	16 A8,2 DIN 6798 [//////]
106	9.1030.0020.4	16 M8 DIN 985-A2-2
107	9.1113.0202*5	2 M12x40 DIN 931-8.8
108	9.1051.0009.0	2 A12,5 DIN 6798 [//////]

199	2.3219.0001.3	(1)	= REF. 103A-106 Roestvrijstalen gebogen schoep (103A) Stainless steel bent spoon (103A)
A)			Aube courbée en acier inoxydable (103A) Gebogene Leitschaufel aus rostfreiem Stahl (103A)

Pag. CB/b 02 Ombouwset (rechte schoep)
Page CB/b 02 Modification kit (straight spoon)
Page CB/b 02 Kit de modification (aube droite)
Seite CB/b 02 Umbausatz (rechte Leitschaufel)

REF.	ONDERDEELNR. PART NUMBER REFERENCE TEILNUMMER	AANTAL QUANTITY QUANTITE ANZAHL
------	--	--

101	2.3218.1493.0	2
102	2.3218.1495.0	2
103B	2.3218.1491.0	4 [R]
	2.3218.1490.0	4 [L][x]
104	9.1058.0036*6	16 M8x16 DIN 603-8.8
105	9.1051.0007.5	16 A8,2 DIN 6798 [//////]
106	9.1030.0020.4	16 M8 DIN 985-A2-2
107	9.1113.0202*5	2 M12x40 DIN 931-8.8
108	9.1051.0009.0	2 A12,5 DIN 6798 [//////]

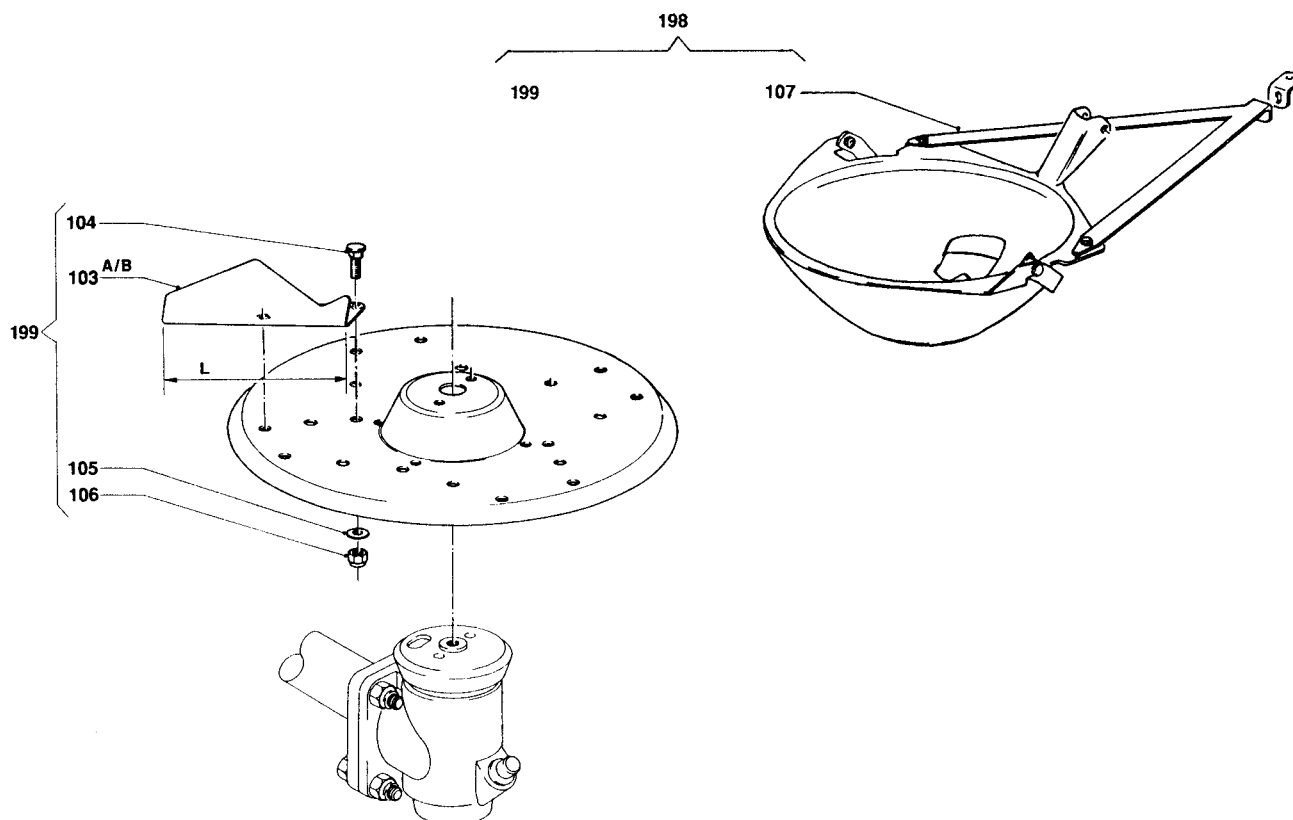
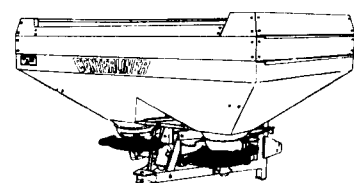
199	2.3219.0001.4	(1)	= REF. 103B-106 Gebogen schoep van gehard staal (103B) Hardened steel bent spoon
(103B)			Aube courbée en acier durci (103B) Gebogene Leitschaufel aus gehärtetem Stahl (103B)

Pag. CB/b 02 Ombouwset (rechte schoep)
Page CB/b 02 Modification kit (straight spoon)
Page CB/b 02 Kit de modification (aube droite)
Seite CB/b 02 Umbausatz (rechte Leitschaufel)

(A/B)



CENTERLINER	type number type number numéro de type Typnummer	vanaf serienummer as from serial number après numéro de serie ab Seriennummer
CB - S	2.3219.0001.1	916 - 0501



A035-03-10

REF.	ONDERDEELNR. PART NUMBER REFERENCE TEILNUMMER	AANTAL QUANTITY QUANTITE ANZAHL	
------	--	--	--

103A	2.3224.0148.0	4	[R]
	2.3224.0149.0	4	[L][x]
104	9.1058.0036*6	16	M8x16 DIN 603-8.8
105	9.1049.0014.0	16	Nylon M8 [/]
106	9.1030.0020.4	16	M8 DIN 985-A2-2

107	2.3224.0111.0	1	[R] Vork, fork, fourchette
	2.3224.0131.0	1	[L][x] Gabel

198	2.3280.1444.0	1	= REF. 103A-107 Ombouwset (rechte schoep) Modification kit (straight spoon) Kit de modification (aube droite) Umbausatz (rechte Leitschaufel)
-----	---------------	---	---

199	2.3224.0001.2	1	= REF. 103A-106 (L= 217 mm) Roestvrijstalen rechte schoep (103A) Stainless steel straight spoon (103A) Aube droite en acier inoxydable (103A) Rechte Leitschaufel aus rostfreiem Stahl (103A)
-----	---------------	---	---

REF.	ONDERDEELNR. PART NUMBER REFERENCE TEILNUMMER	AANTAL QUANTITY QUANTITE ANZAHL	
------	--	--	--

103B	2.3224.0158.0	4	[R]
	2.3224.0159.0	4	[L][x]
104	9.1058.0036*6	16	M8x16 DIN 603-8.8
105	9.1049.0014.0	16	Nylon M8 [/]
106	9.1030.0020.4	16	M8 DIN 985-A2-2

107	2.3224.0111.0	1	[R] Vork, fork, fourchette
	2.3224.0131.0	1	[L][x] Gabel

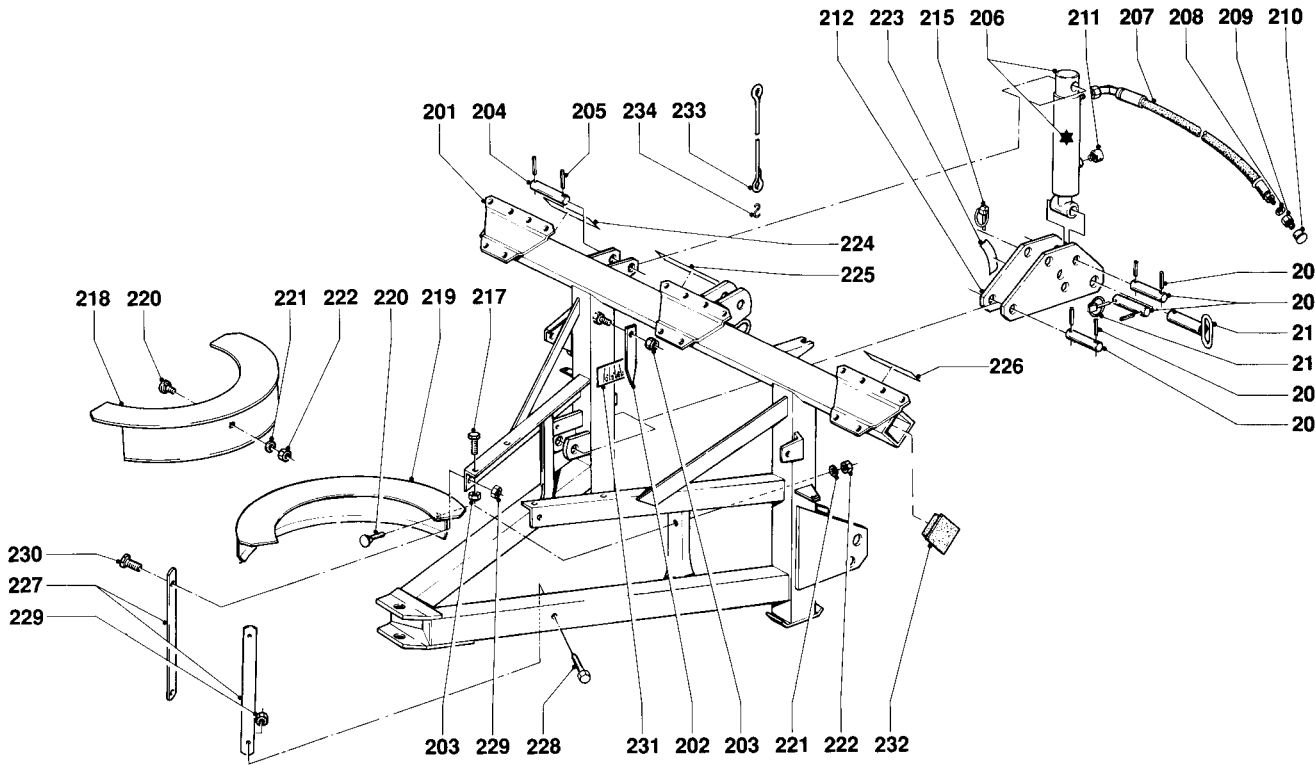
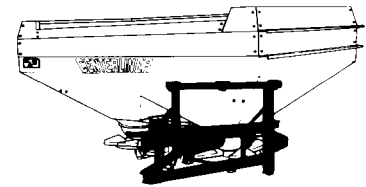
198	2.3280.1443.0	(1)	= REF. 103B-107 Ombouwset (rechte schoep) Modification kit (straight spoon) Kit de modification (aube droite) Umbausatz (rechte Leitschaufel)
-----	---------------	-----	---

199	2.3224.0001.3	(1)	= REF. 103B-106 (L= 217 mm) Rechte schoep van gehard staal (103B) Hardened steel straight spoon (103B) Aube droite en acier durci (103B) Rechte Leitschaufel aus gehärtetem Stahl (103B)
-----	---------------	-----	--

(A/B)



CENTERLINER	type number type number numéro de type Typnummer	vanaf serienummer as from serial number après numéro de serie ab Seriennummer
CB - S	2.3219.0001.1	948 - 0501



A002-08-00

REF.	ONDERDEELNR. PART NUMBER REFERENCE TEILNUMMER	AANTAL QUANTITY QUANTITE ANZAHL
------	--	--

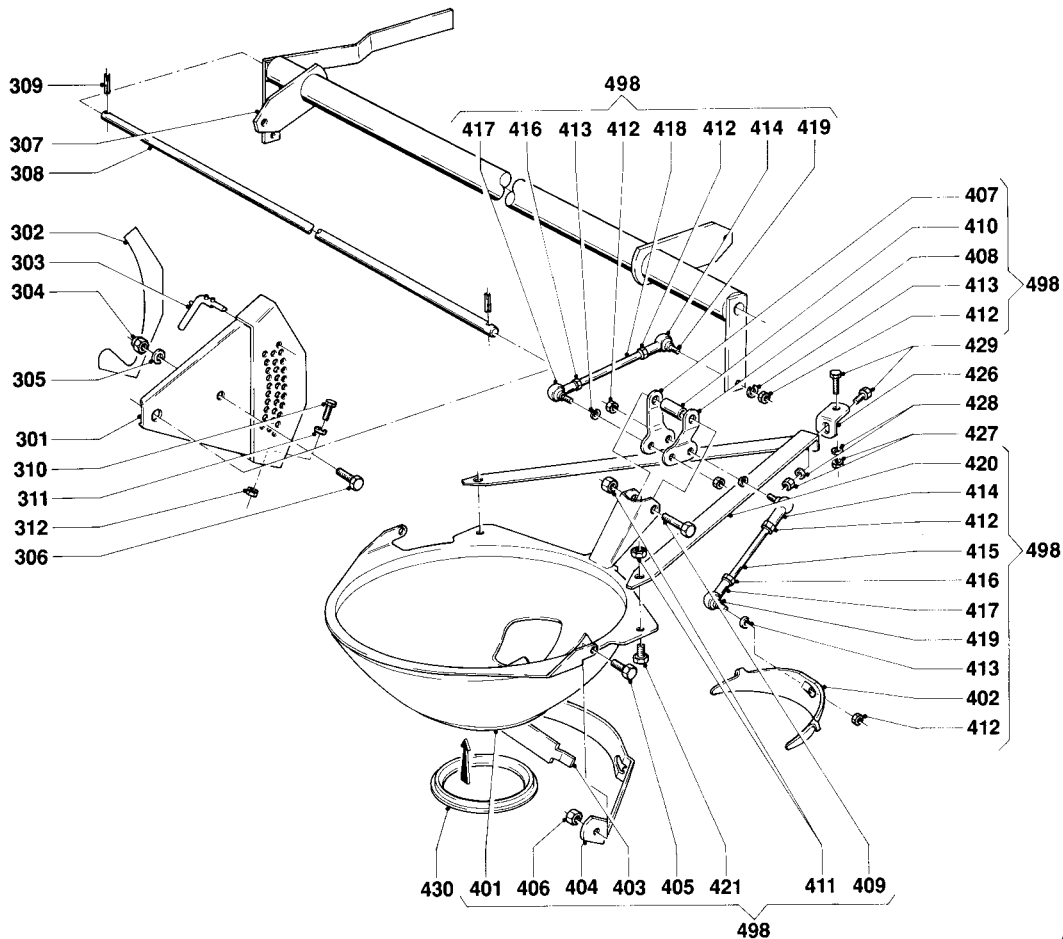
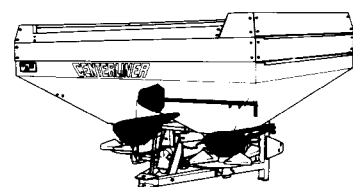
201	2.3219.0013.0	1
202	2.3217.1487.0	1
203	9.1030.0022.6	5 M10 DIN 985-A2-2
204	2.3219.1498.0	4
205	9.1070.0021.0	7 Ø8x40 DIN 1481
206	2.3219.0070.0	1 (206= 206*+211)
*	2.3219.0079.0	- [A+A][x]
207	2.3201.2311.0	1 L= 1810 mm
208	9.1137.0401.5	- Ø14x20x1,5 Cu
209	9.1137.0603.4	- 1/2"-1/4"
	9.1137.0606.0	- 3/8"-1/4"
210	9.1108.0030.6	-
211	9.1150.0005.2	- 3/8" BSP SLW17
212	2.3219.0060.0	1
213	9.1123.0004*0	1 Ø8x6,3
214	1.1804.0310.0	2
215	9.1123.0002*5	2 Ø8x11
217	9.1113.0183*0	4 M10x25 DIN 933-8.8
218	2.3218.0190.0	1 [L]
219	2.3218.0180.0	1 [R]
220	9.1058.0037*0	4 M8x20 DIN 603-8.8
221	9.1048.0058*3	4 A8,4 DIN 9021 []
222	9.1030.0020.4	4 M8 DIN 985-A2-2
223	9.1170.0110.3	1 "L-M-R"
224	9.1170.0052.1	1 "LET OP DRAAIENDE DELEN"

REF.	ONDERDEELNR. PART NUMBER REFERENCE TEILNUMMER	AANTAL QUANTITY QUANTITE ANZAHL
------	--	--

225	9.1170.0091.5	1 "ATTENTIE PTO INSCH. STAT."
226	9.1170.0069.4	1 "WERK VEILIG...ZIE INSTR."
227	2.3218.1494.0	2
228	9.1113.0190*0	2 M12x70 DIN 931-8.8
229	9.1030.0023.0	4 M12 DIN 985-A2-2
230	9.1113.0191*1	2 M12x30 DIN 933-8.8
231	9.1170.0162.6	1 0°-15°
232	2.3219.1499.0	2
233	2.3222.1486.0	1 Ø4x300
234	9.1147.0006.6	1 Nr. 50



CENTERLINER	type nummer type number numéro de type Typnummer	vanaf serienummer as from serial number après numéro de serie ab Seriennummer
CB - S	2.3219.0001.1	948 - 0501



A003-07-00

REF.	ONDERDEELNR. PART NUMBER REFERENCE TEILNUMMER	AANTAL QUANTITY QUANTITE ANZAHL	
------	--	--	--

301	2.3217.0120.0	1	
302	9.1170.0132.4	1	"A-B-C"
303	2.3217.0250.0	1	
304	9.1030.0022.6	1	M10 DIN 985-A2-2
305	9.1048.0059*4	1	A10.5 DIN 125 []
306	9.1113.0183*0	1	M10x25 DIN 933-8.8
307	2.3218.0172.0	1	
308	2.3218.1499.0	1	
309	9.1070.0007.0	2	Ø4x20 DIN 1481
310	9.1113.0195*5	1	M6x16 DIN 933-8.8
311	9.1049.0019.5	1	Nr. 201-M6 []
312	9.1029.0026.4	1	M6 A2-2 DIN 934

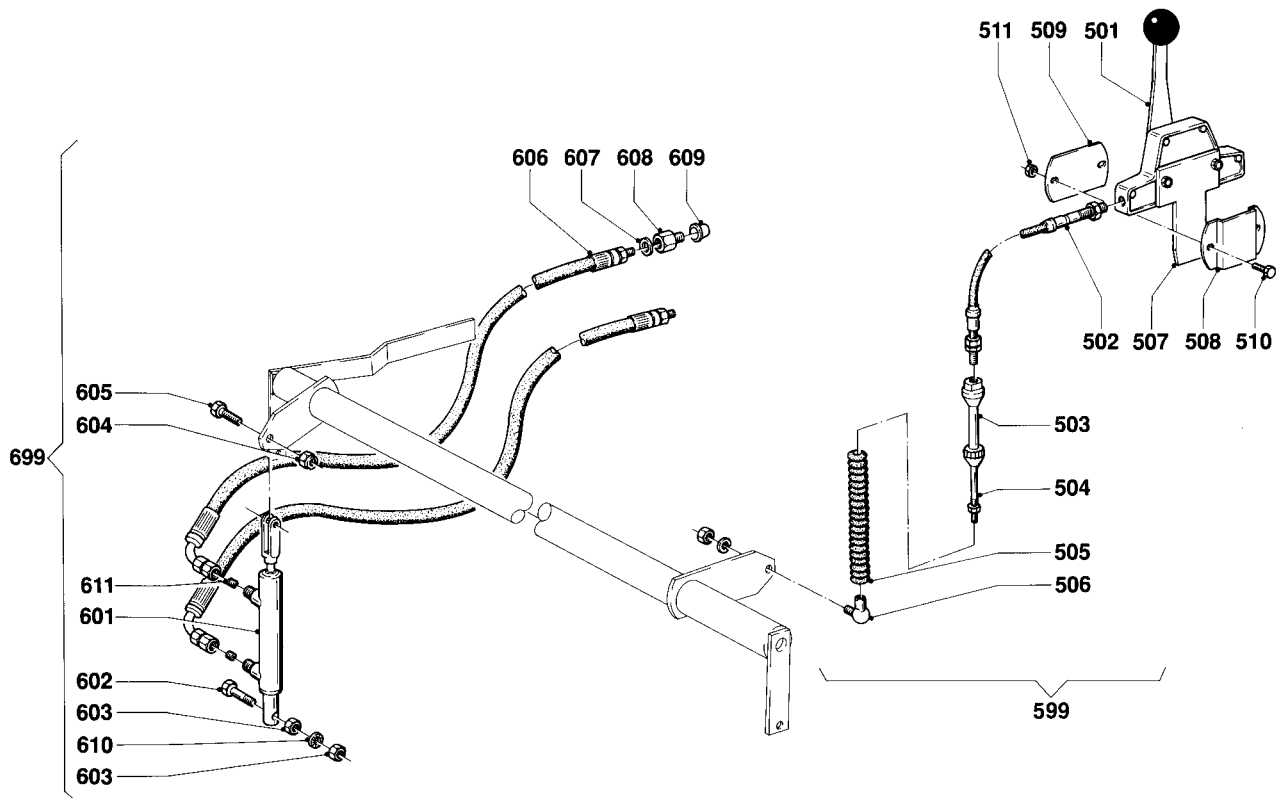
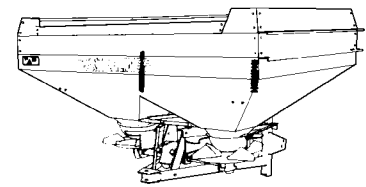
401	2.3218.0110.0	1+1	
402	2.3218.0144.0	1+1	
403	2.3218.0147.0	1+1	
404	2.3218.0145.0	1+1	
405	9.1113.0182*6	2+2	M8x25 DIN 933-8.8
406	9.1029.0029.0	2+2	M8 DIN 934-A2-2
407	2.3218.0149.0	1+1	
408	2.3218.0148.0	1+1	
409	9.1113.0266.6	1+1	M8x65 DIN 931-A2-2
410	2.3218.0146.0	1+1	

REF.	ONDERDEELNR. PART NUMBER REFERENCE TEILNUMMER	AANTAL QUANTITY QUANTITE ANZAHL	
------	--	--	--

411	9.1030.0020.4	3+3	M8 DIN 985-A2-2
412	9.1029.0026.4	6+6	M6 DIN 934-A2-2
413	9.1121.0019.3	6+6	A6 DIN 127 []
414	9.1038.0009.6	2+2	M6-R
415	2.3218.0142.0	1+1	
416	9.1036.0014.6	2+2	M6 DIN 934-L
417	9.1038.0010.0	2+2	M6-L
418	2.3218.0143.0	1+1	
419	9.1038.0003.0	4+4	M6 Type A DIN 71802
420	2.3218.0120.0	1	[R]
421	2.3218.0160.0	1	[L][x]
421	9.1113.0186*3	2+2	M8x20 DIN 933-8.8
426	2.3218.1492.0	2	
427	9.1030.0020.4	4	M8 DIN 985-A2-2
428	9.1048.0058*3	4	A8,4 DIN 9021 []
429	9.1113.0182*6	4	M8x25 DIN 933-8.8
430	2.3218.0118.0	-	
498	2.3218.0100.0	1	= REF. 401-421 [R]
499	2.3218.0150.0	1	= REF. 401-421 [L][x]



CENTERLINER	type number type number numéro de type Typnummer	vanaf serienummer as from serial number après numéro de serie ab Seriennummer
CB - S	2.3219.0001.1	948 - 0501



A037-01-00

REF.	ONDERDEELNR. PART NUMBER REFERENCE TEILNUMMER	AANTAL QUANTITY QUANTITE ANZAHL
------	--	--

601	2.3218.2170.0	1
602	9.1113.0216.5	1
603	9.1029.0029.0	2
604	9.1030.0020.4	1
605	9.1113.0198.1	1
606	2.3201.2311.0	2
607	9.1137.0401.5	-
608	9.1137.0606.0	-
608	9.1137.0603.4	-
609	9.1108.0030.6	-
610	9.1051.0007.5	1
611	2.3201.2400.0	2
699	2.3218.2102.0	1

REF.	ONDERDEELNR. PART NUMBER REFERENCE TEILNUMMER	AANTAL QUANTITY QUANTITE ANZAHL
------	--	--

501	9.1180.0806.3	1
502	9.1180.0804.1	1
	9.1180.0811.1**	-
503	9.1180.0803.0	1
504	9.1180.0805.2	1
	9.1180.0812.2**	-
505	9.1180.0802.6	1
506	9.1180.0801.5	1
507	9.1180.0807.4	1
508	2.3217.1497.0	1
509	2.3217.1498.0	1
510	9.1113.0127*0	2
511	9.1030.0011*2	2
599	9.1180.0800.4	1
599	9.1180.0810.0**	-
-	2.3217.0270.0	-

= REF. 601-611

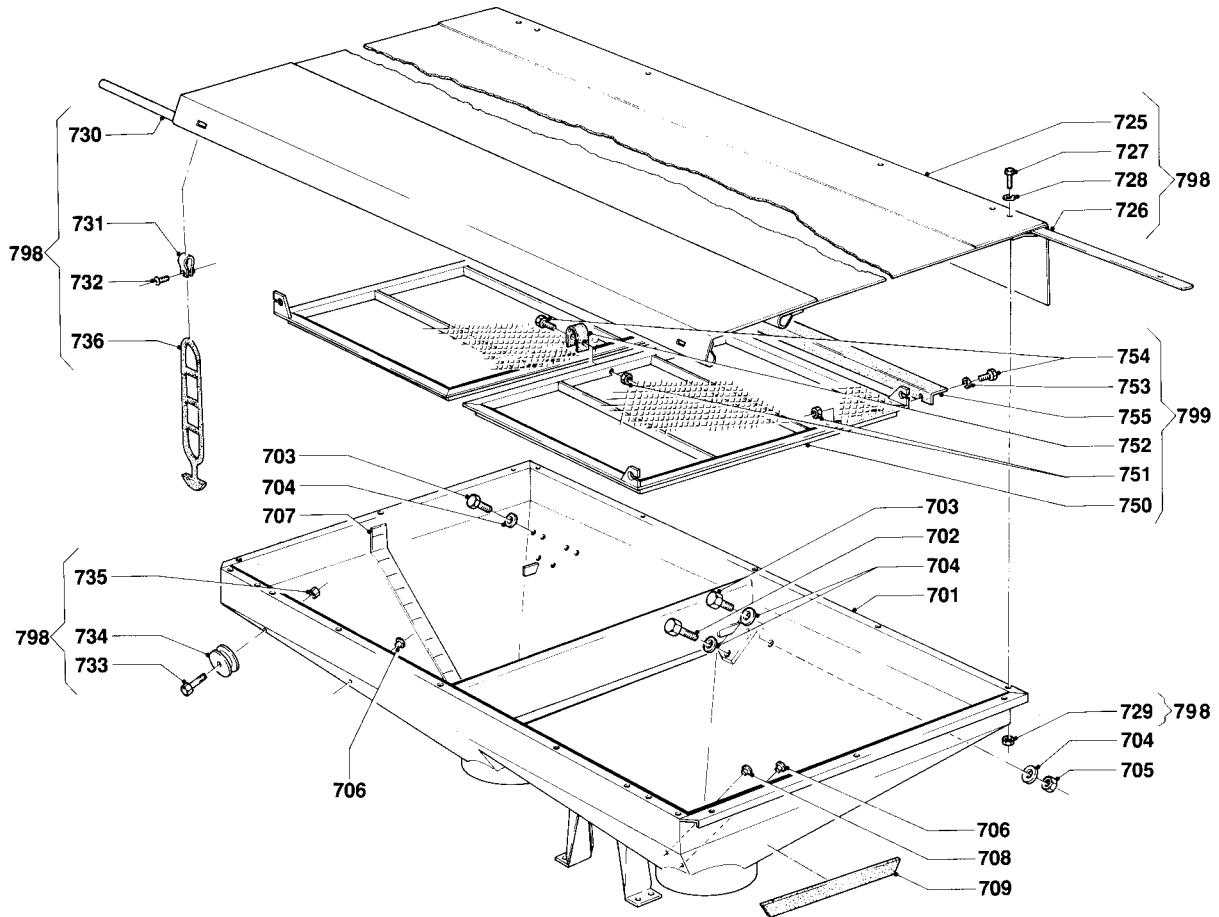
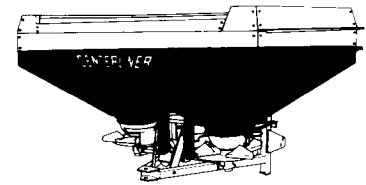
= REF. 501-507 L= 2800 mm

= REF. 501-507 L= 3800 mm

= REF. 501-511



CENTERLINER	type nummer type number numéro de type Typnummer	vanaf serienummer as from serial number après numéro de serie ab Seriennummer
CB - S	2.3219.0001.1	960 - 0501



A004-07-00

REF.	ONDERDEELNR. PART NUMBER REFERENCE TEILNUMMER	AANTAL QUANTITY QUANTITE ANZAHL
------	--	--

701	2.3219.0041.0	1
702	9.1113.0189*6	4
703	9.1113.0183*0	14
704	9.1048.0059*4	36
705	9.1030.0022.6	18
706	9.1105.0006.6	2
707	9.1170.0193.2	1
708	9.1105.0007.0	2
709	2.3224.1497.0	8

725	2.3219.2019.0	1
726	2.3219.2018.0	2
727	9.1113.0182*6	4
728	9.1048.0058.3	4
729	9.1030.0020.4	4

730	2.3219.2017.0	1
731	4.1022.1485.0	2
732	9.1059.0008.5	2
733	9.1113.0184*1	2
734	9.1141.0015.0	2

735	9.1030.0021.5	2
736	9.1054.0006.1	2
	9.1054.0007.2	2

REF.	ONDERDEELNR. PART NUMBER REFERENCE TEILNUMMER	AANTAL QUANTITY QUANTITE ANZAHL
------	--	--

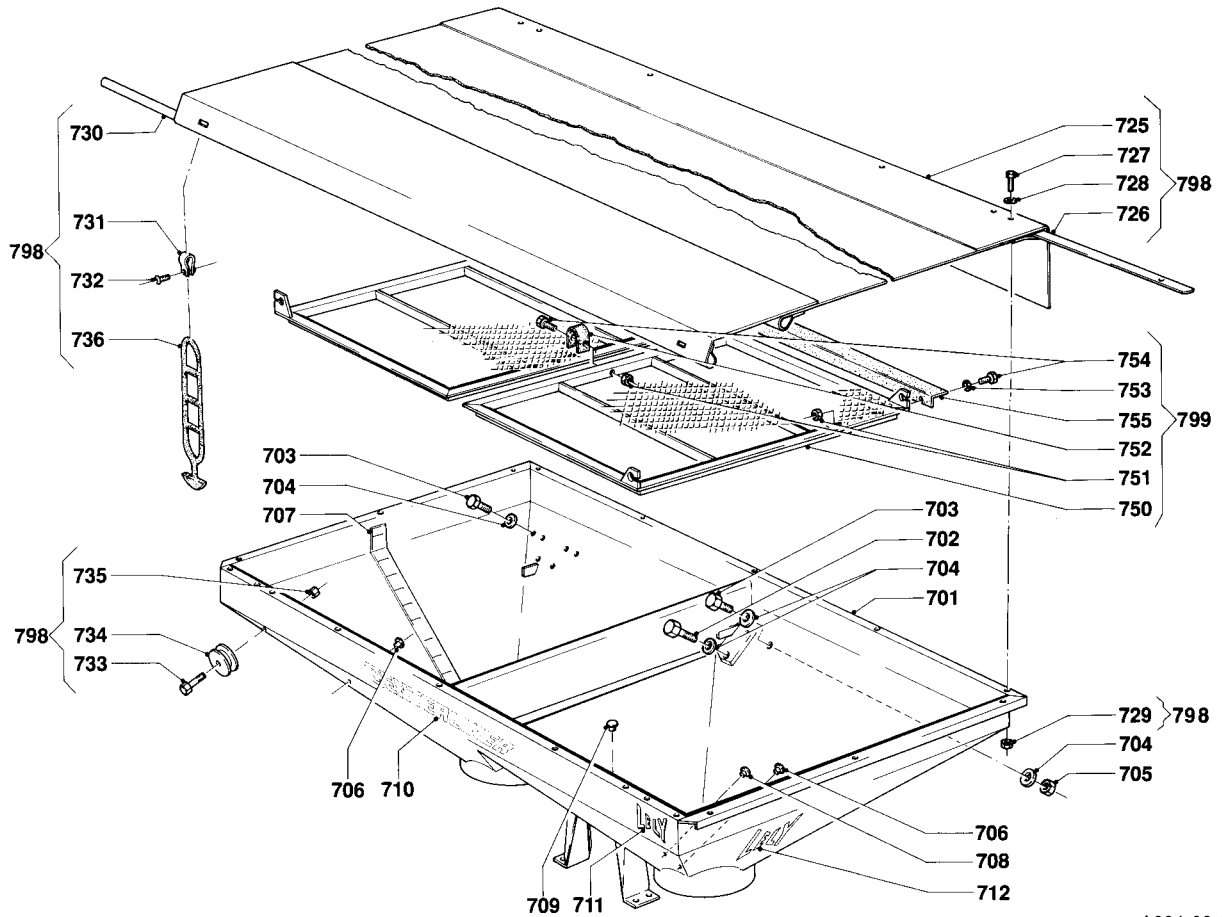
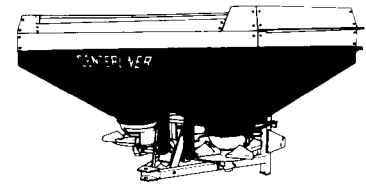
750	2.3218.0241.0	1+1
751	9.1029.0027.5	15+15
752	2.3218.0269.0	1+1
753	9.1048.0049.1	15+15
754	9.1113.0166.4	15+15
755	2.3220.0119.0	2+2

798 2.3219.2011.0 1 = REF. 725-736

799 2.3218.0231.0 2 = REF. 750-755



CENTERLINER	type nummer type number numéro de type Typnummer	vanaf serienummer as from serial number après numéro de série ab Seriennummer
CB - S	2.3219.0001.1	961 - 0701



A004-08-00

REF.	ONDERDEELNR. PART NUMBER REFERENCE TEILNUMMER	AANTAL QUANTITY QUANTITE ANZAHL	
------	--	--	--

701	2.3219.0041.0	1	
702	9.1113.0189*6	4	M10x35 DIN 933-8.8
703	9.1113.0183*0	14	M10x25 DIN 933-8.8
704	9.1048.0059*4	36	A10,5 DIN 125 []
705	9.1030.0022.6	18	M10 DIN 985-A2-2

706	9.1105.0006.6	2	Ø12
707	9.1170.0193.2	1	"CB 1600 / 800 L"
708	9.1105.0007.0	2	Ø7
709	9.1108.0063.5	20	Ø8
710	9.1170.0199.1	1	"CENTERLINER"

711	9.1170.0200.2	1	"LELY"
712	9.1170.0001.6	2	"LELY"

725	2.3219.2019.0	1	
726	2.3219.2018.0	2	
727	9.1113.0182*6	4	M8x25 DIN 933-8.8
728	9.1048.0058.3	4	A8,4 DIN 9021 []
729	9.1030.0020.4	4	M8 DIN 985-A2-2

730	2.3219.2017.0	1	
731	4.1022.1485.0	2	
732	9.1059.0008.5	2	KB 4,0x18 (+) A2
733	9.1113.0184*1	2	M6x20 DIN 933
734	9.1141.0015.0	2	

735	9.1030.0021.5	2	M6 DIN 985-A2-2
736	9.1054.0006.1	2	Nr. 11, 28 cm
	9.1054.0007.2	2	Nr. 12, 38 cm

REF.	ONDERDEELNR. PART NUMBER REFERENCE TEILNUMMER	AANTAL QUANTITY QUANTITE ANZAHL	
------	--	--	--

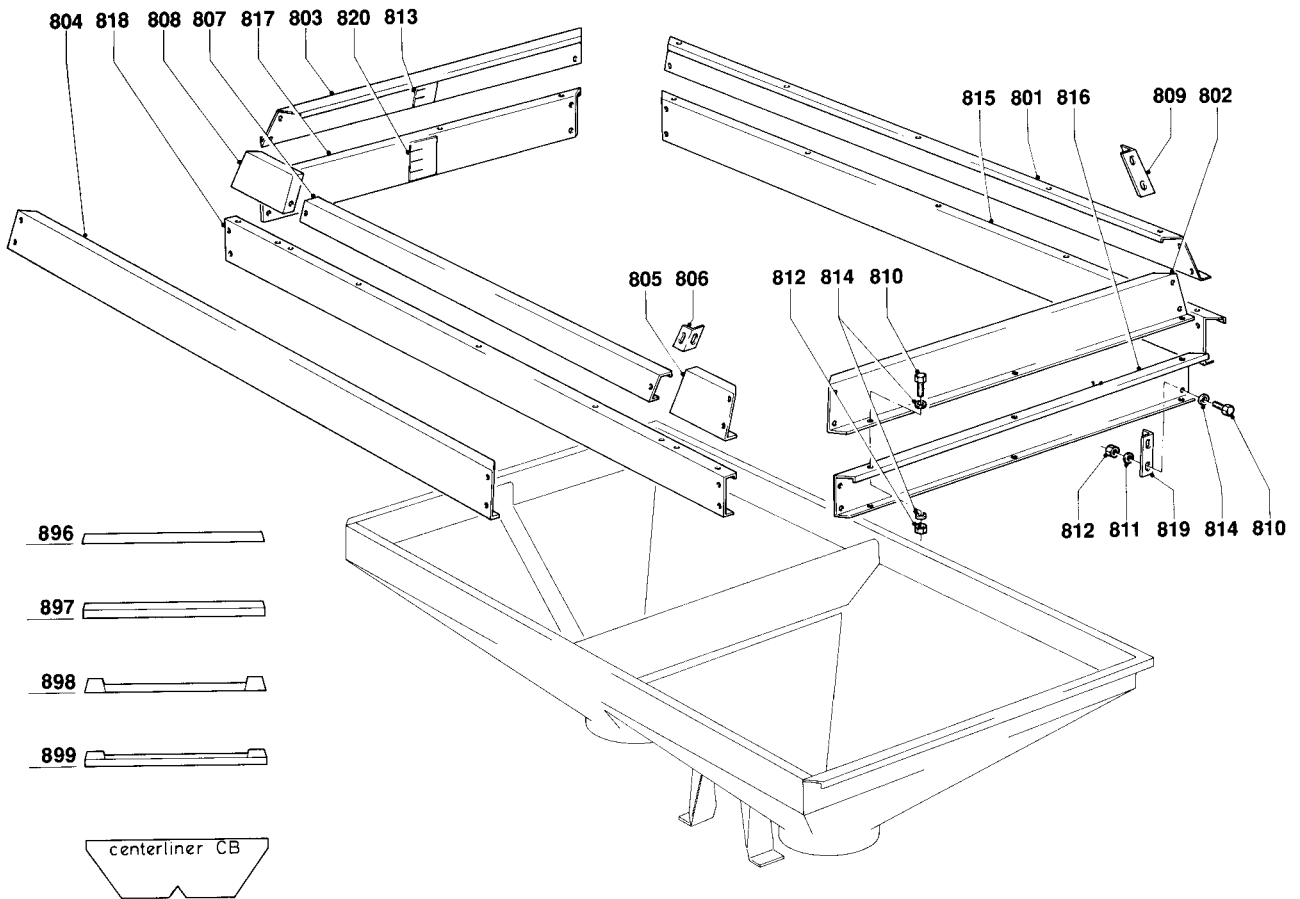
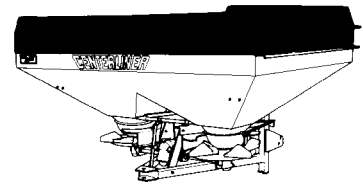
750	2.3218.0241.0	1+1	
751	9.1029.0027.5	15+15	M6 DIN 934-6.6 Nylon
752	2.3218.0269.0	1+1	
753	9.1048.0049.1	15+15	A6,4 DIN 9021-6.6 Nyl. []
754	9.1113.0166.4	15+15	M6x16 DIN 933-6.6 Nylon
755	2.3220.0119.0	2+2	

798	2.3219.2011.0	1	= REF. 725-736
-----	---------------	---	----------------

799	2.3218.0231.0	2	= REF. 750-755
-----	---------------	---	----------------



CENTERLINER	type number type number numéro de type Typnummer	vanaf serienummer as from serial number après numéro de serie ab Seriennummer
CB - S	2.3219.0001.1	948 - 0501



A034-05-00

REF.	ONDERDEELNR. PART NUMBER REFERENCE TEILNUMMER	AANTAL QUANTITY QUANTITE ANZAHL
------	--	--

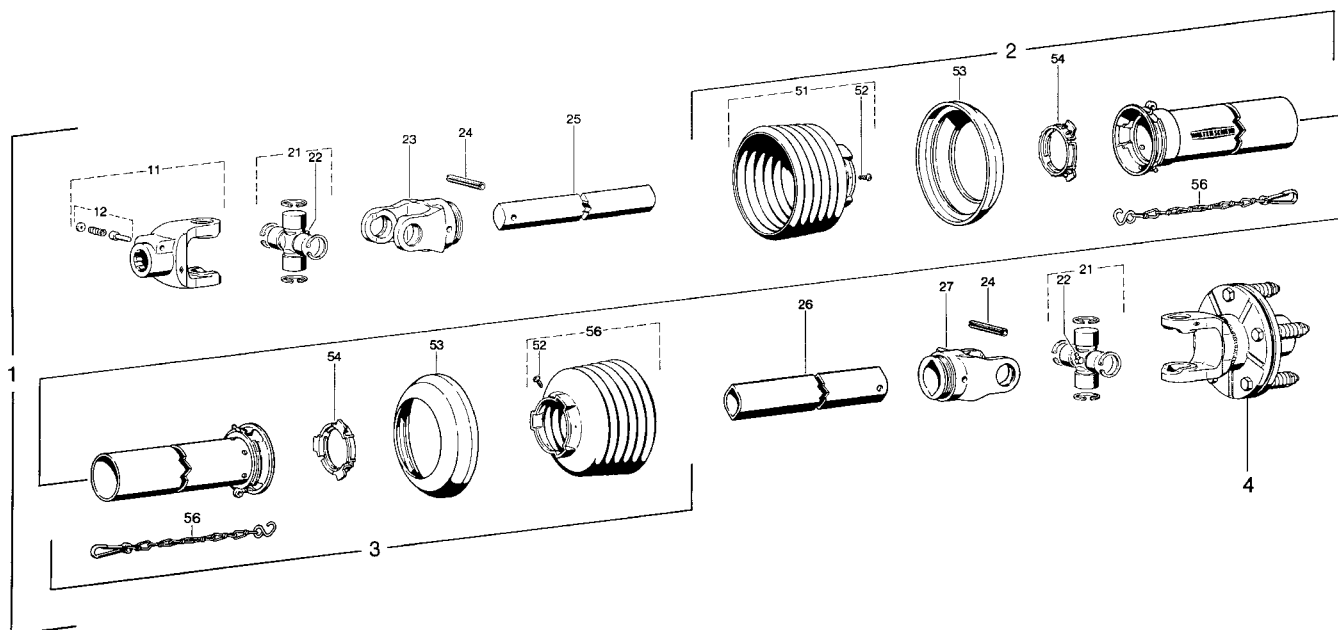
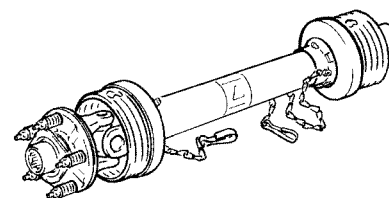
REF.	ONDERDEELNR. PART NUMBER REFERENCE TEILNUMMER	AANTAL QUANTITY QUANTITE ANZAHL
------	--	--

REF.	ONDERDEELNR. PART NUMBER REFERENCE TEILNUMMER	AANTAL QUANTITY QUANTITE ANZAHL
	896 897 898 899	
801	2.3219.2036.0	1 1 1 1
802	2.3219.2039.0	1 1 1 1 [R]
803	2.3219.2038.0	1 1 1 1 [L]
804	2.3219.2037.0	1 1 - -
805	2.3219.2079.0	- - 1 1
806	2.3219.2075.0	- - 1 1 [R]
	2.3219.2076.0	- - 1 1 [L][x]
807	2.3219.2077.0	- - 1 1
808	2.3219.2078.0	- - 1 1
809	2.3219.2035.0	4 4 4 4
810	9.1113.0186*3	32 64 40 72 M8x20 DIN 933-8.8
811	9.1048.0058*3	16 32 20 36 A8,4 DIN 9021
[]	9.1030.0020.4	32 64 40 72 M8 DIN 985-A2-2
813	9.1170.0196.5	2 2 2 2 "CB 2400"
814	9.1048.0072.3	48 96 60 108 A8,4 DIN 125 6.6 Nylon
815	2.3219.2056.0	- 1 - 1
816	2.3219.2059.0	- 1 - 1 [R]
817	2.3219.2058.0	- 1 - 1 [L]
818	2.3219.2057.0	- 1 - 1
819	2.3219.2055.0	- 4 - 4
820	9.1170.0197.6	- 2 - 2 "CB 3000"

896	2.3219.2020.0	1 - - - = REF. 801-814 CB 2400
897	2.3219.2040.0	- 1 - - = REF. 801-820 CB 3000
898	2.3219.2060.0	- - 1 - = REF. 801-814 CB 2400
899	2.3219.2080.0	- - - 1 = REF. 801-820 CB 3000



CENTERLINER	type number type number numéro de type Typnummer	vanaf serienummer as from serial number après numéro de serie ab Seriennummer
CB - S	2.3219.0001.1	948 - 0501



Aw001.04.01

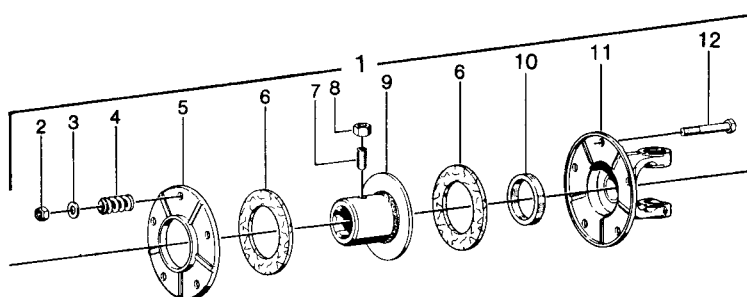
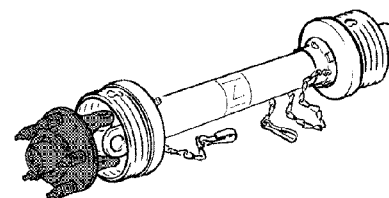
REF.	ONDERDEELNR. PART NUMBER REFERENCE TEILNUMMER	AANTAL QUANTITY QUANTITE ANZAHL	
------	--	--	--

1	9.1154.0075.5	1	W2100-SD05-860mm-K94 = REF. 2-56
2	85.005	1	SDH 05
3	85.004	1	SDH 05
4	56.101.19	1	K94 / 1-B-400Nm
11	10.10.00	1	1.3/8" (6)
12	339107	1	AGRASET 101
21	10.01.00	2	
22	63.27.00	2	M8x1
23	10.48.00	1	RG2100-00a
24	61.04.01	2	8x50 DIN1481
25	75.06.15	1	00a
26	75.12.15	1	0a
27	10.49.00	1	RG 2100-0a
51	85.05.05	1	
52	60.15.00	2	4x10
53	83.10.03	2	
54	83.09.01	2	
55	82.36.03	2	
56	85.05.04	1	

REF.	ONDERDEELNR. PART NUMBER REFERENCE TEILNUMMER	AANTAL QUANTITY QUANTITE ANZAHL	
------	--	--	--



CENTERLINER	type number type number numéro de type Typnummer	vanaf serienummer as from serial number après numéro de serie ab Seriennummer
CB - S	2.3219.0001.1	948 - 0501



Aw002.02.00

REF.	ONDERDEELNR. PART NUMBER REFERENCE TEILNUMMER	AANTAL QUANTITY QUANTITE ANZAHL	
------	--	--	--

1	56.101.19	1	K94/1-B-2100 1.1/8" (6); M= 400Nm. = REF. 2-12
2	9.1030.0012*3	5	M8 DIN 985
3	9.1048.0004*5	5	B8,4 DIN 125 [—]
4	66.01.47	5	
5	16.20.69	1	
6	56.73.07	2	
7	60.05.48	1	M10x25 DIN 913
8	60.52.00	1	M10 DIN 934
9	16.50.413	1	1.1/8" (6)
10	16.52.05	1	
11	10.34.121	1	
12	9.1113.0175*6	5	M8x60 DIN 931

REF.	ONDERDEELNR. PART NUMBER REFERENCE TEILNUMMER	AANTAL QUANTITY QUANTITE ANZAHL	
------	--	--	--