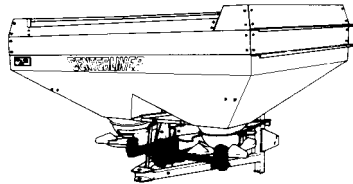


**LELY****CENTERLINER**type nummer  
type number  
numéro de type  
Typnummervanaf serienummer  
as from serial number  
après numéro de série  
ab Seriennummer

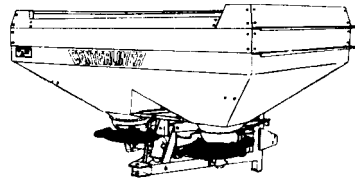
CB - S

2.3224.0001.1

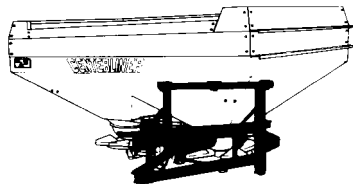
980 - 0501

**CBr****Inhoud  
Contents  
Index  
Inhalt****CENTERLINER CB - S****pagina  
page  
page  
Seite**Aandrijving  
Transmission  
Entraînement  
Antrieb

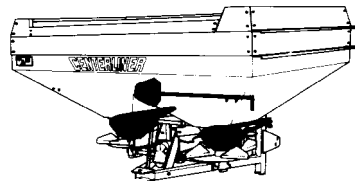
01

Werpschijven  
Ejector discs  
Disques éjecteurs  
Wurfscheiben

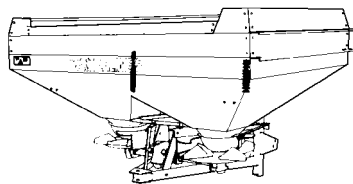
02

Freem  
Frame  
Châssis  
Rahmen

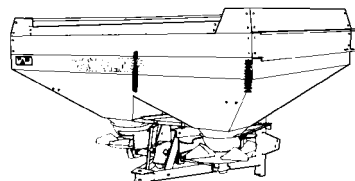
03

Dosering  
Feed system  
Ensemble de dosage  
Dosiervorrichtung

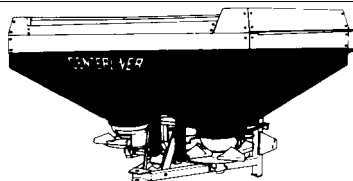
04

Bedieningskabel  
Command cable  
Câble de commande  
Bedienungskabel

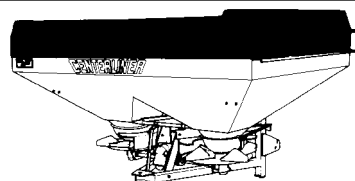
05

Hydraulische bediening  
Hydraulic command  
Commande hydraulique  
Hydraulische Bedienung

05

Vorraadbak  
Hopper  
Trémie  
Behälter

06

Opzetrand  
Hopper extension  
Rehausse de trémie  
Behälteraufsatz

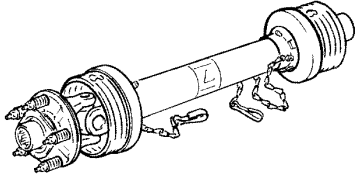
07

**LELY****CENTERLINER**type number  
type number  
numéro de type  
Typnummervanaf serienummer  
as from serial number  
après numéro de serie  
ab Seriennummer

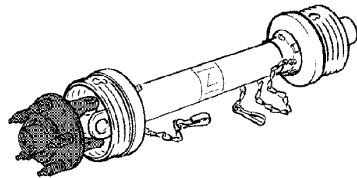
CB - S

2.3224.0001.1

980 - 0501

**CBr****Inhoud  
Contents  
Index  
Inhalt****CENTERLINER CB - S****pagina  
page  
page  
Seite**Koppelingsas  
PTO shaft  
Arbre de transmission  
Gelenkwelle

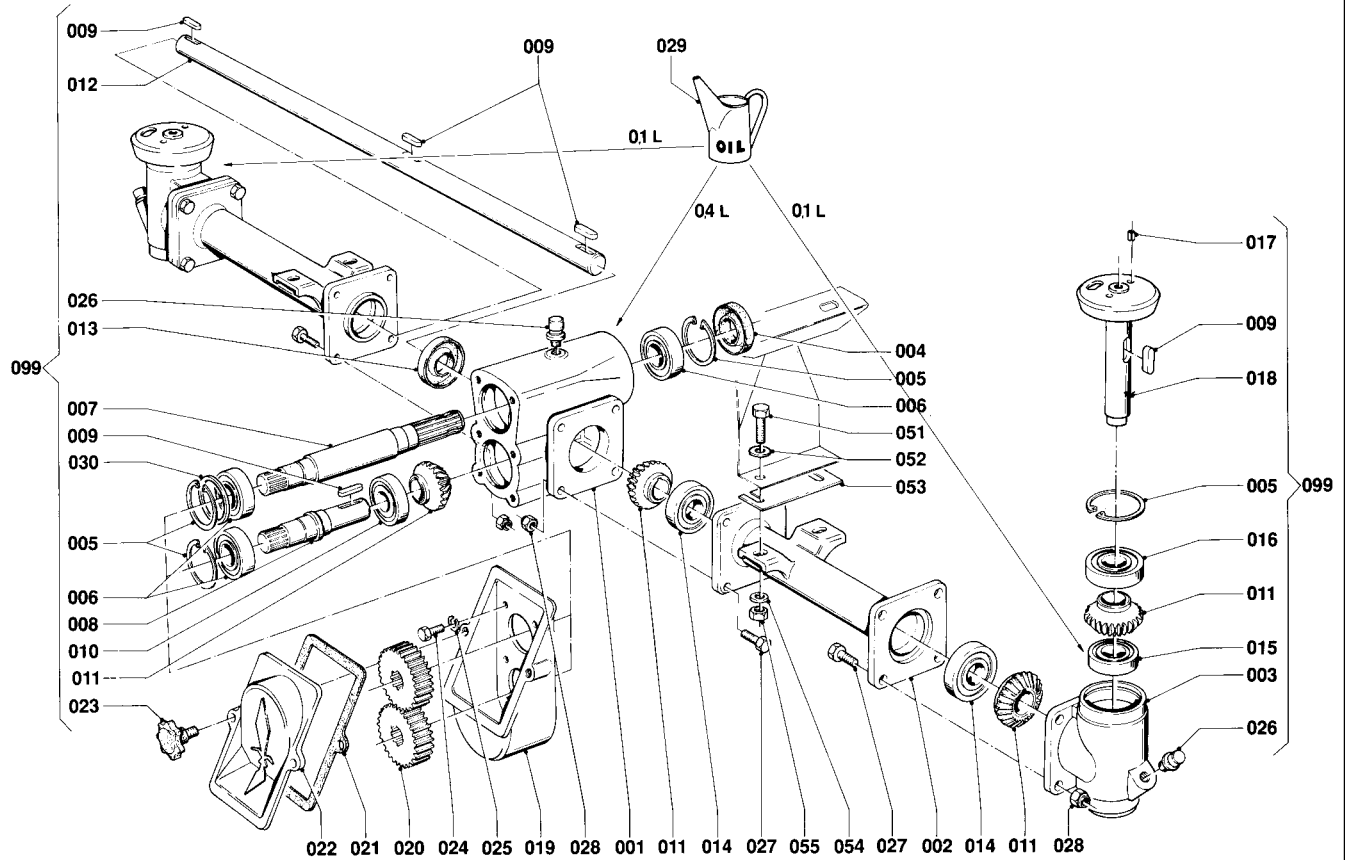
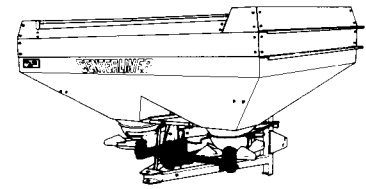
08

Slipkoppeling  
Friction clutch  
Limiteur à friction  
Reibkupplung

09



CENTERLINER	type nummer type number numéro de type Typnummer	vanaf serienummer as from serial number après numéro de serie ab Seriennummer
CB - S	2.3224.0001.1	980 - 0501



A001-05-00

REF.	ONDERDEELNR. PART NUMBER REFERENCE TEILNUMMER	AANTAL QUANTITY QUANTITE ANZAHL		
------	--	--	--	--

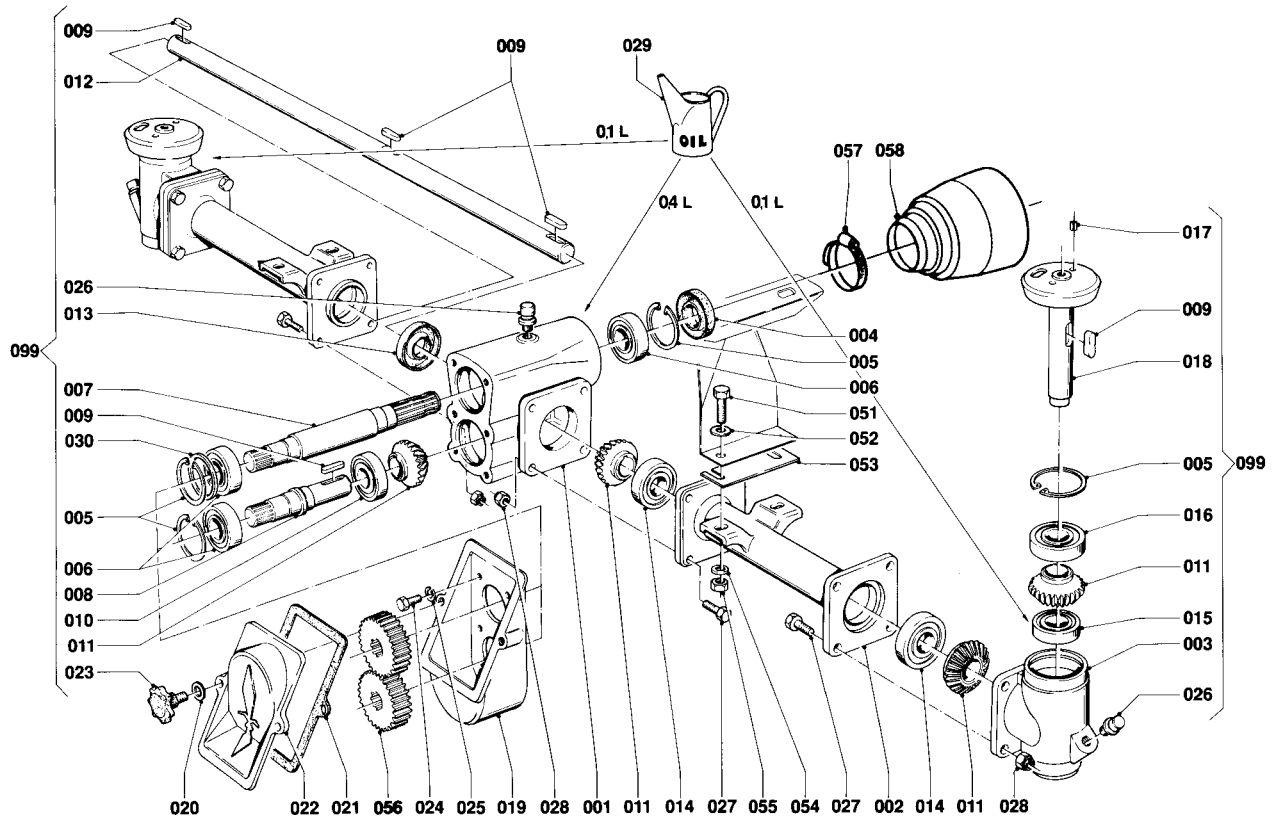
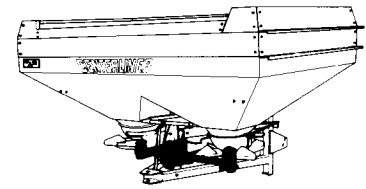
001	2.3217.0017.0	1		
002	2.3217.0018.0	2		
003	2.3217.0025.0	2		
004	9.1042.0065.2	1	30x62x10 CB	[> <]
005	9.1120.0005.4	5	62x2,00 DIN 472	
006	9.1001.0062.5	3	6206-C4	
007	2.3217.0021.0	1	1.1/8" (6)	
008	2.3217.0022.0	1		
009	9.1071.0009.1	6	A8x7x32 DIN 6885	
010	9.1001.0063.6	1	6305-C4	
011	2.3217.0024.0	6		
012	2.3217.0023.0	1		
013	9.1042.0054.5	1	25x62x10 CB	[> <]
014	9.1001.0061.4	3	6305-2 RS	
015	9.1001.0071.0	2	6304-C4	
016	9.1001.0075.4	2	6305-2RS1-C3-MT47B	
017	9.1070.0050.1	4	Ø8x20 DIN 1481	
018	2.3218.0019.0	2		
019	2.3217.0019.0	1		
020	2.3217.0027.1	1	Z= 12/23	[T+T]
	2.3217.0029.1	-	Z= 13/22	[T+T]
	2.3217.0031.1	-	Z= 14/21	[T+T]
	2.3217.0033.1	-	Z= 15/20	[T+T]
	2.3217.0035.1	-	Z= 16/19	[T+T]
	2.3217.0037.1	-	Z= 17/18	[T+T]

REF.	ONDERDEELNR. PART NUMBER REFERENCE TEILNUMMER	AANTAL QUANTITY QUANTITE ANZAHL		
------	--	--	--	--

021	2.3217.0026.0	1		
022	2.3217.0020.0	1		
023	9.1141.0009.1	2	M10x35 DIN 6336	
024	9.1113.0013.5	6	M8x16 DIN 933-8.8	
025	9.1121.0010.1	6	A8 DIN 127	[_/_]
026	1.1606.0022.1	3		
027	9.1113.0130.3	16	M8x30 DIN 933-8.8	
028	9.1030.0012*3	16	M8 DIN 985-8	
029	9.1171.0044.6	(0,6 L)	0,7L GP 80W90 ESSO	
030	9.1093.0035.5	-	50x62x0,3 DIN 988 (max. 1x)	
051	9.1113.0189*6	4	M10x35 DIN 933-8.8	
052	9.1048.0059*4	4	A10,5 DIN 125	[_/_]
053	2.3217.1481.0	-	d= 0,5 mm	
	2.3217.1482.0	-	d= 1 mm	
	2.3217.1488.0	-	d= 2 mm	
	2.3217.1483.0	-	d= 4 mm	
054	9.1048.0062*0	4	A10 DIN 7349	[_/_]
055	9.1030.0022.6	4	M10 DIN 985-A2-2	
099	2.3218.0010.0	1	= REF. 001-030	



CENTERLINER	type nummer type number numéro de type Typnummer	vanaf serienummer as from serial number après numéro de serie ab Seriennummer
CB - S	2.3224.0001.1	1007 - 0905



A001-06-01

REF.	ONDERDEELNR. PART NUMBER REFERENCE TEILNUMMER	AANTAL QUANTITY QUANTITE ANZAHL		
------	--	--	--	--

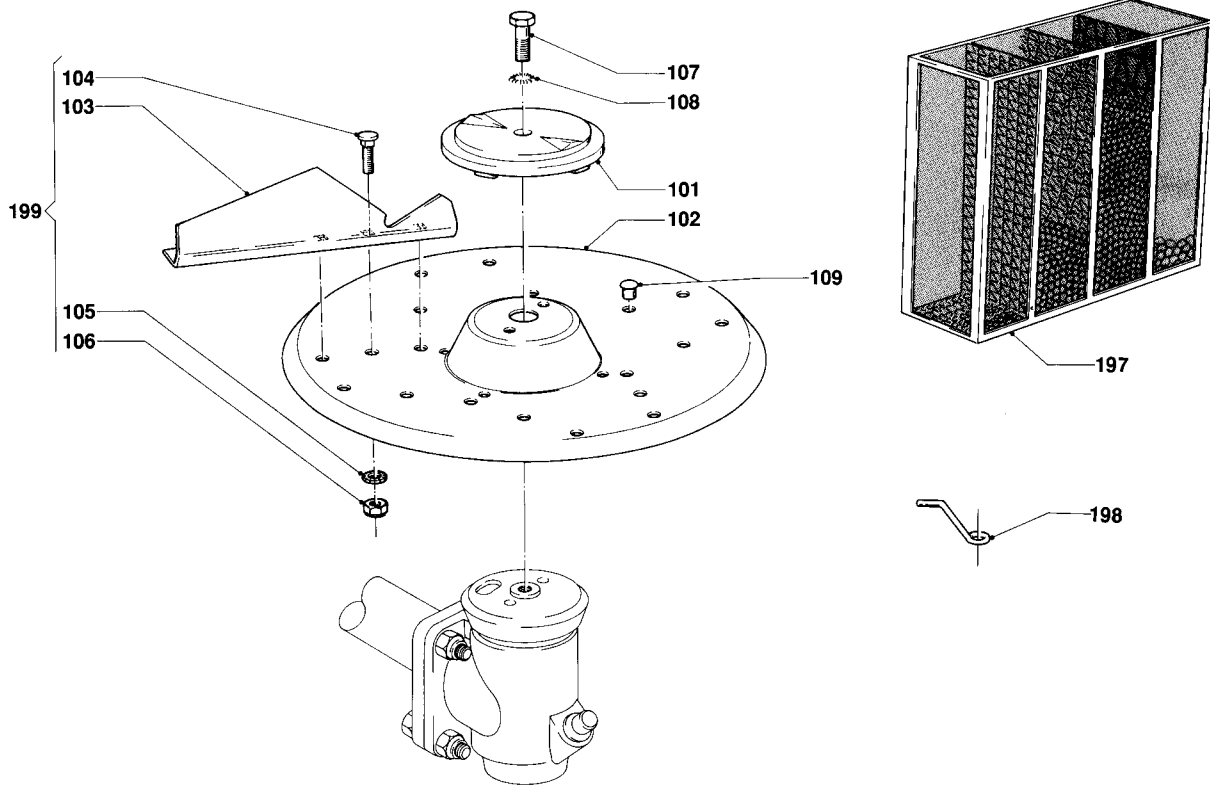
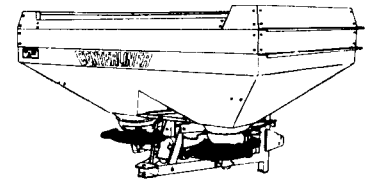
001	2.3217.0017.0	1		
002	2.3217.0018.0	2		
003	2.3217.0025.0	2		
004	9.1042.0065.2	1	30x62x10 CB	[> <]
005	9.1120.0005.4	5	62x2,00 DIN 472	
006	9.1001.0062.5	3	6206 C4	
007	2.3217.0021.0	1	1.1/8" (6)	
008	2.3217.0022.0	1		
009	9.1071.0009.1	6	A8x7x32 DIN 6885	
010	9.1001.0063.6	1	6305 C4	
011	2.3217.0024.0	6		
012	2.3217.0023.0	1		
013	9.1042.0054.5	1	25x62x10 CB	[> <]
014	9.1001.0061.4	3	6305 2RS1	
015	9.1001.0071.0	2	6304 C4	
016	9.1001.0075.4	2	6305 2RS1-C3-MT47B	
017	9.1070.0050.1	4	Ø8x20 DIN 1481	
018	2.3218.0019.0	2		
019	2.3217.0019.0	1		
020	9.1048.0051*3	2	A10,5 DIN 125	[—]
021	2.3217.0026.0	1		
022	2.3217.0020.0	1		
023	9.1141.0009.1	2	M10x35 DIN 6336	
024	9.1113.0013.5	6	M8x16 DIN 933-8.8	
025	9.1121.0010.1	6	A8 DIN 127	[—]

REF.	ONDERDEELNR. PART NUMBER REFERENCE TEILNUMMER	AANTAL QUANTITY QUANTITE ANZAHL		
------	--	--	--	--

026	1.1606.0022.1	(3)		
027	9.1113.0130.3	16	M8x30 DIN 933-8.8	
028	9.1030.0012*3	16	M8 DIN 985-8	
029	9.1171.0044.6	(0,6 L)	0,7L GP 80W90 ESSO	
030	9.1093.0035.5	-	50x62x0,3 DIN988 (max. 1x)	
051	9.1113.0189*6	4	M10x35 DIN 933-8.8	
052	9.1048.0059*4	4	A10,5 DIN 125	[—]
053	2.3217.1481.0	-	d= 0,5 mm	
	2.3217.1482.0	-	d= 1 mm	
	2.3217.1488.0	-	d= 2 mm	
	2.3217.1483.0	-	d= 4 mm	
054	9.1048.0062*0	4	A10 DIN 7349	[—]
055	9.1030.0022.6	4	M10 DIN 985-A2-2	
056	2.3217.0027.1	1	Z= 12/23	[T+T]
	2.3217.0029.1	-	Z= 13/22	[T+T]
	2.3217.0031.1	-	Z= 14/21	[T+T]
	2.3217.0033.1	-	Z= 15/20	[T+T]
	2.3217.0035.1	-	Z= 16/19	[T+T]
	2.3217.0037.1	-	Z= 17/18	[T+T]
057	9.1066.0016.6	1	Ø77-Ø95	
058	9.1161.0021.0	1		
099	2.3218.0010.0	1	= REF. 001-030	



CENTERLINER	type nummer type number numéro de type Typnummer	vanaf serienummer as from serial number après numéro de série ab Seriennummer
CB - S	2.3224.0001.1	980 - 0501



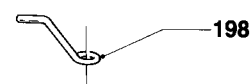
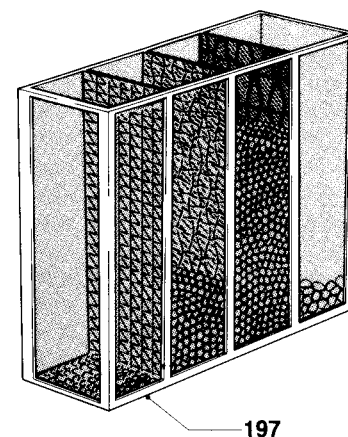
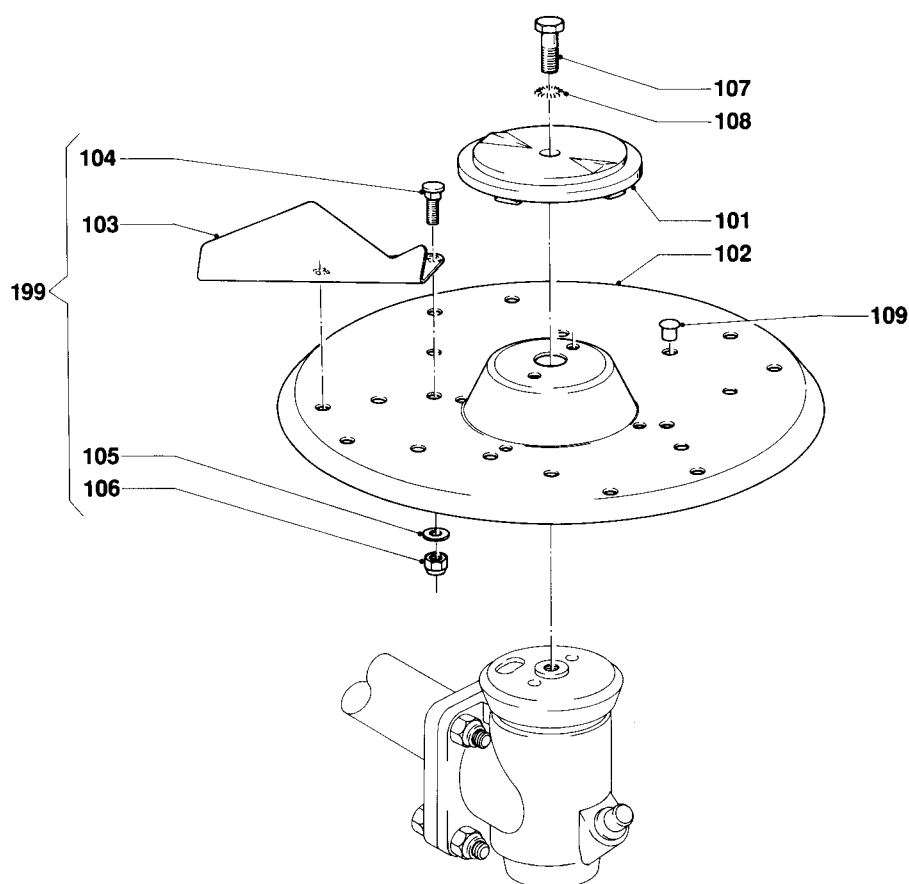
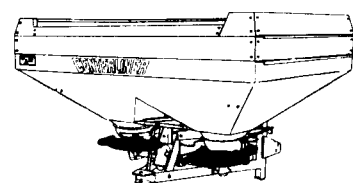
A036-02-01

REF.	ONDERDEELNR. PART NUMBER REFERENCE TEILNUMMER	AANTAL QUANTITY QUANTITE ANZAHL	
101	2.3218.1493.0	2	
102	2.3225.1495.0	2	
103A	2.3224.0148.0	4	[R]
	2.3224.0149.0	4	[L][x]
104	9.1058.0036*6	8	M8x16 DIN 603-8.8
105	9.1049.001.04	8	Nylon M8 [—/—]
106	9.1030.0020.4	8	M8 DIN 985-A2-2
107	9.1113.0202*5	2	M12x40 DIN 931-8.8
108	9.1051.0009.0	2	A12,5 DIN 6798 [//////]
109	9.1108.0047.3	16	Ø11,7
197	9.1074.0501.5	1	DSM-Fraktiemeter DSM Grading kit Boîte de granulométrie DSM DSM-Bruchteilmessgerät
199	2.3224.0001.2	1	= REF. 103A-106 Roestvrijstalen rechte schoep (103A) Stainless steel straight spoon (103A) Aube droite en acier inoxydable (103A) Rechte Leitschaufel aus rostfreiem Stahl (103A)

REF.	ONDERDEELNR. PART NUMBER REFERENCE TEILNUMMER	AANTAL QUANTITY QUANTITE ANZAHL	
101	2.3218.1493.0	2	
102	2.3225.1495.0	2	
103B	2.3224.0158.0	4	[R]
	2.3224.0159.0	4	[L][x]
104	9.1058.0036*6	8	M8x16 DIN 603-8.8
105	9.1049.0014.0	8	Nylon M8 [—/—]
106	9.1030.0020.4	8	M8 DIN 985-A2-2
107	9.1113.0202*5	2	M12x40 DIN 931-8.8
108	9.1051.0009.0	2	A12,5 DIN 6798 [//////]
109	9.1108.0047.3	16	Ø11,7
198	2.3218.2189.0	2	Draadagitator (graszaad) Wire agitator (grass seeds) Agitateur à fil (semences de graminées) Drahtrührwerk (Grassamen)
199	2.3224.0001.3	1	= REF. 103B-106 Rechte schoep van gehard staal (103B) Hardened steel straight spoon (103B) Aube droite en acier durci (103B) Rechte Leitschaufel aus gehärtetem Stahl (103B)



CENTERLINER	type nummer type number numéro de type Typnummer	vanaf serienummer as from serial number après numéro de série ab Seriennummer
CB - S	2.3224.0001.1	1007 - 0759



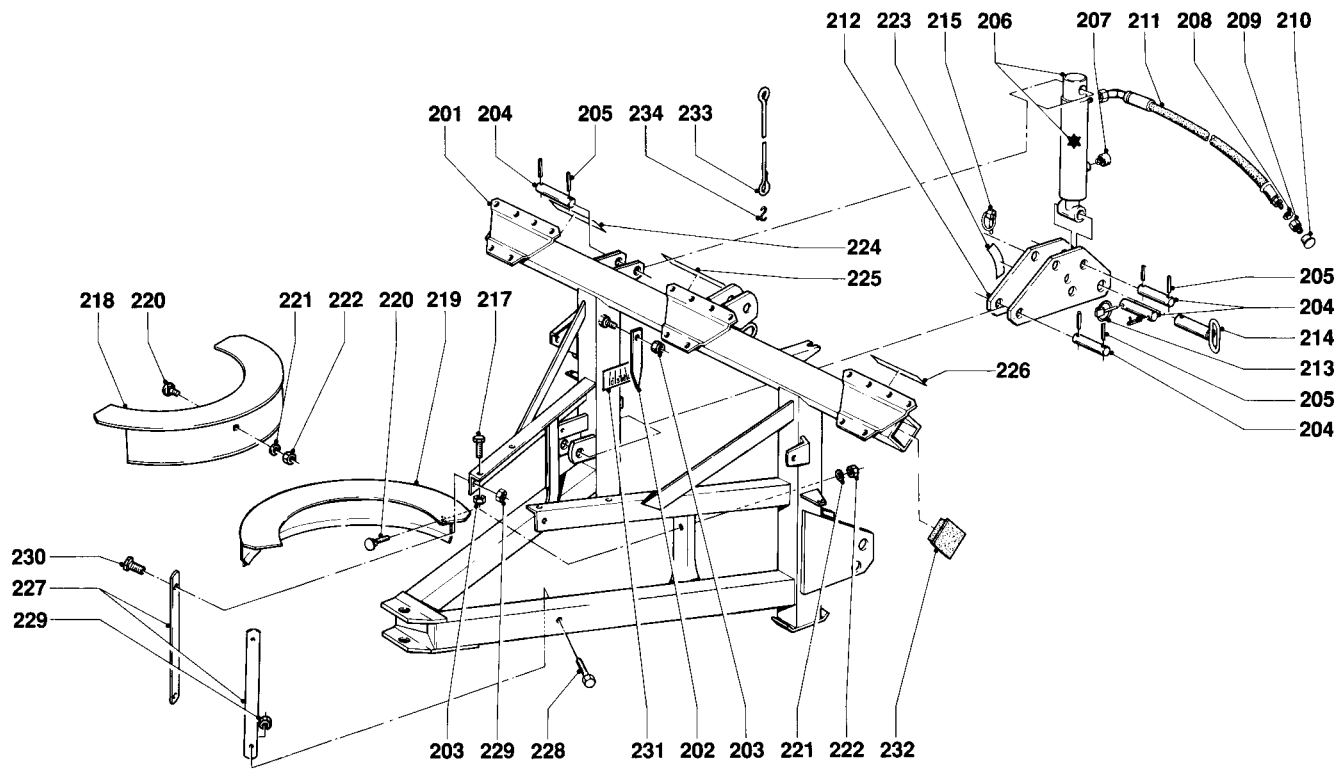
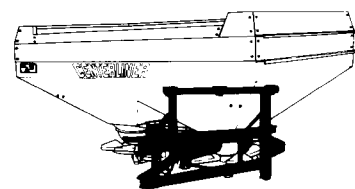
A035-03-00

REF.	ONDERDEELNR. PART NUMBER REFERENCE TEILNUMMER	AANTAL QUANTITY QUANTITE ANZAHL	
101	2.3218.1493.0	2	
102	2.3225.1495.0	2	
103A	2.3224.0148.0	4	[R]
	2.3224.0149.0	4	[L][x]
104	9.1058.0036*6	16	M8x16 DIN 603-8.8
105	9.1049.0020.4	16	Nylon M8 [—/—]
106	9.1030.0020.4	16	M8 DIN 985-A2-2
107	9.1113.0202*5	2	M12x40 DIN 931-8.8
108	9.1051.0009.0	2	A12,5 DIN 6798 [////]
109	9.1108.0047.3	16	Ø11,7
197	9.1074.0501.5	1	DSM-Fraktiemeter DSM Grading kit Boîte de granulométrie DSM DSM-Bruchteilmessgerät
199	2.3224.0001.2	1	= REF. 103A-106 Roestvrijstalen rechte schoep (103A) Stainless steel straight spoon (103A) Aube droite en acier inoxydable (103A) Rechte Leitschaufel aus rostfreiem Stahl (103A)

REF.	ONDERDEELNR. PART NUMBER REFERENCE TEILNUMMER	AANTAL QUANTITY QUANTITE ANZAHL	
101	2.3218.1493.0	2	
102	2.3225.1495.0	2	
103B	2.3224.0158.0	4	[R]
	2.3224.0159.0	4	[L][x]
104	9.1058.0036*6	16	M8x16 DIN 603-8.8
105	9.1049.0020.4	16	Nylon M8 [—/—]
106	9.1030.0020.4	16	M8 DIN 985-A2-2
107	9.1113.0202*5	2	M12x40 DIN 931-8.8
108	9.1051.0009.0	2	A12,5 DIN 6798 [////]
109	9.1108.0047.3	16	Ø11,7
198	2.3218.2189.0	2	Draadagitator (graszaad) Wire agitator (grass seeds) Agitateur à fil (semences de graminées) Drahtrührwerk (Grassamen)
199	2.3224.0001.3	1	= REF. 103B-106 Rechte schoep van gehard staal (103B) Hardened steel straight spoon (103B) Aube droite en acier durci (103B) Rechte Leitschaufel aus gehärtetem Stahl (103B)



CENTERLINER	type nummer type number numéro de type Typnummer	vanaf serienummer as from serial number après numéro de serie ab Seriennummer
CB - S	2.3224.0001.1	980 - 0501



A002-09-00

REF.	ONDERDEELNR. PART NUMBER REFERENCE TEILNUMMER	AANTAL QUANTITY QUANTITE ANZAHL
------	--	--

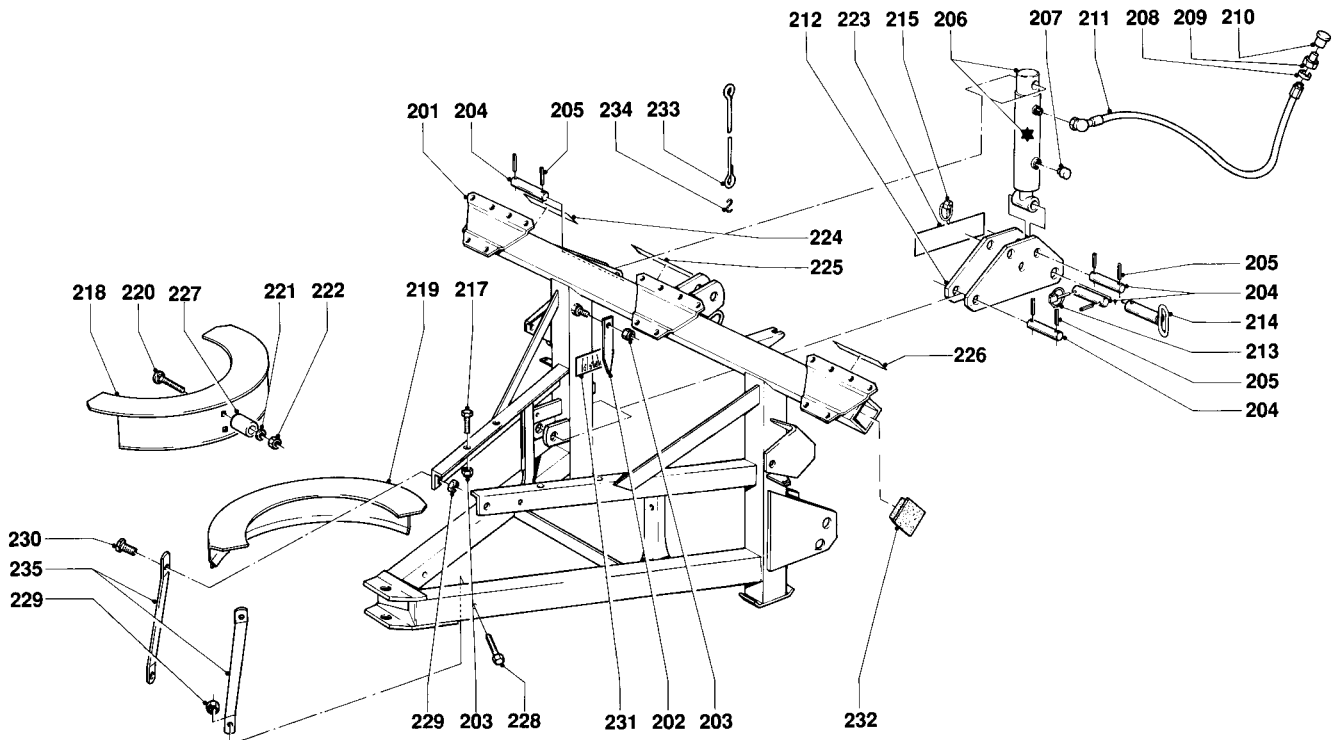
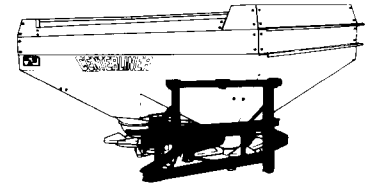
201	2.3219.0013.0	1
202	2.3217.1487.0	1
203	9.1030.0022.6	5 M10 DIN 985-A2-2
204	2.3219.1498.0	4
205	9.1070.0021.0	7 Ø8x40 DIN 1481
206	2.3219.0070.0	1 (206= 206*+207) KV slag / extension: 145 mm course / Hub: 145 mm
*	2.3219.0079.0	- (d=Ø30, D=Ø60/70) [A+A][x]
207	9.1150.0005.2	- 3/8" BSP SLW17
208	9.1137.0401.5	- Ø14x20x1,5 Cu
209	9.1137.0603.4	- 1/2"-1/4"
	9.1137.0606.0	- 3/8"-1/4"
210	9.1108.0030.6	-
211	2.3201.2311.0	1 L= 1810 mm
212	2.3219.0060.0	1
213	9.1123.0004*0	1 8x6,3
214	1.1804.0310.0	2
215	9.1123.0002*5	2 8x11
217	9.1113.0183*0	4 M10x25 DIN 933-8.8
218	2.3218.0190.0	1 [L]
219	2.3218.0180.0	1 [R]
220	9.1058.0037*0	4 M8x20 DIN 603-8.8
221	9.1048.0057*2	4 A8,4 DIN 125 [ ]
222	9.1030.0020.4	4 M8 DIN 985-A2-2

REF.	ONDERDEELNR. PART NUMBER REFERENCE TEILNUMMER	AANTAL QUANTITY QUANTITE ANZAHL
------	--	--

223	9.1170.0110.3	1 "L-M-R"
224	9.1170.0052.1	1 "LET OP DRAAIENDE DELEN"
225	9.1170.0091.5	1 "ATTENTIE PTO INSCH. STAT."
226	9.1170.0069.4	1 "WERK VEILIG....ZIE INSTR."
227	2.3218.1494.0	2
228	9.1113.0190*0	2 M12x70 DIN 931-8.8
229	9.1030.0023.0	4 M12 DIN 985-A2-2
230	9.1113.0191*1	2 M12x30 DIN 933-8.8
231	9.1170.0162.6	1 0°-15°
232	2.3219.1499.0	2
233	2.3222.1486.0	1 Ø4x300
234	9.1147.0006.6	1 Nr. 50



CENTERLINER	type number type number numéro de type Typnummer	vanaf serienummer as from serial number après numéro de serie ab Seriennummer
CB - S	2.3224.0001.1	988 - 0920



A002-10-00

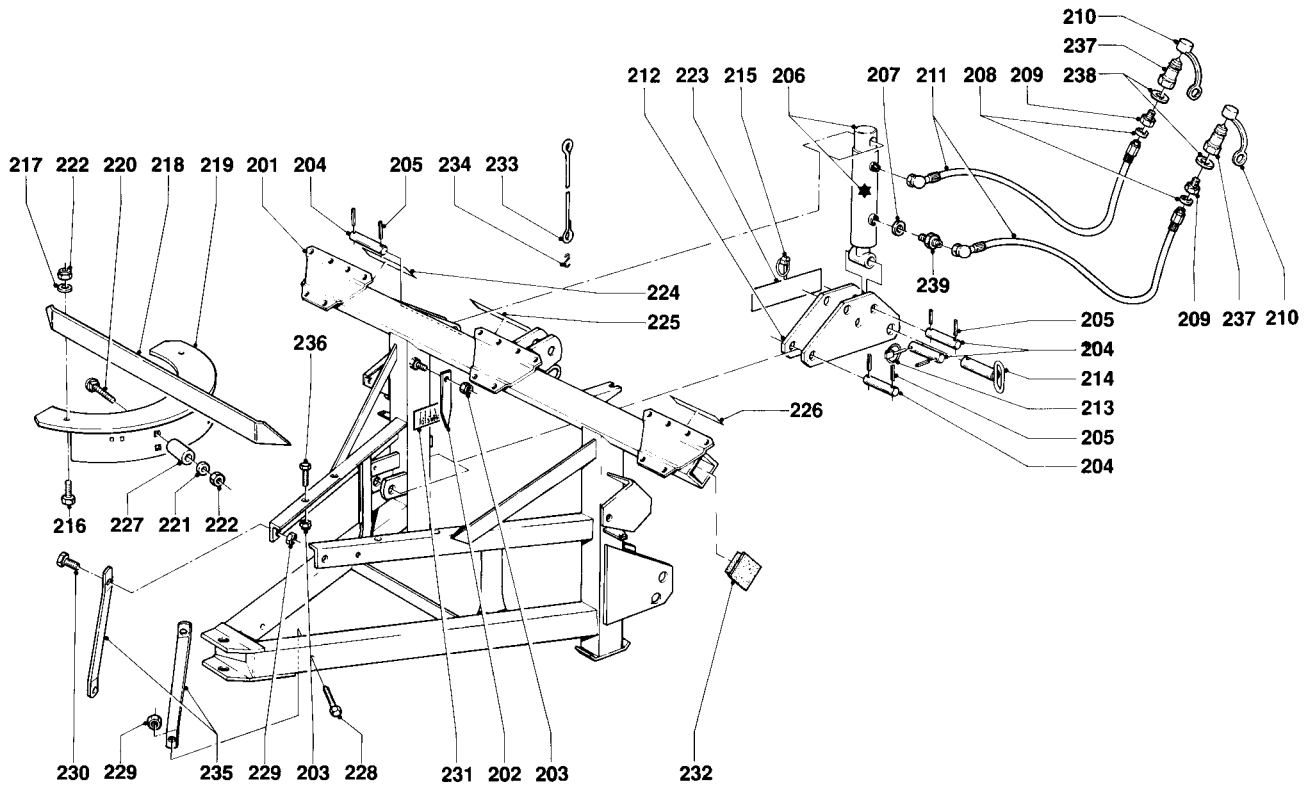
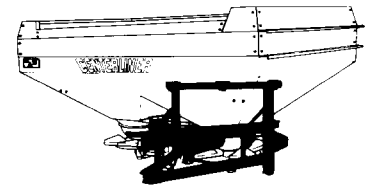
REF.	ONDERDEELNR. PART NUMBER REFERENCE TEILNUMMER	AANTAL QUANTITY QUANTITE ANZAHL	
201	2.3225.0111.0	1	
202	2.3217.1487.0	1	
203	9.1030.0022.6	5	M10 DIN 985-A2-2
204	2.3219.1498.0	3	L= 142 mm
	2.3225.1492.0	1	L= 122 mm
205	9.1070.0021.0	7	Ø8x40 DIN 1481
206	2.3225.0420.0	1	(206= 206*+207) slag / extension: 80 mm course / Hub: 80 mm
*	2.3225.0429.0	-	(d=Ø30, D=Ø60/70) [A+A][x]
207	9.1150.0005.2	-	3/8" BSP SLW17
208	9.1137.0401.5	-	Ø14x20x1,5 Cu
209	9.1137.0603.4	-	1/2"-1/4"
	9.1137.0606.0	-	3/8"-1/4"
210	9.1108.0030.6	-	
211	2.3201.2311.0	1	L= 1810 mm
212	2.3225.0430.0	1	
213	9.1123.0004*0	1	8x6,3
214	1.1804.0310.0	2	
215	9.1123.0002*5	2	8x11
217	9.1113.0183*0	4	M10x25 DIN 933-8.8
218	2.3218.0190.0	1	[L]
219	2.3218.0180.0	1	[R]
220	9.1058.0033*3	6	M8x60 DIN 603-8.8
221	9.1048.0058*3	6	A8,4 DIN 9021 [—]

REF.	ONDERDEELNR. PART NUMBER REFERENCE TEILNUMMER	AANTAL QUANTITY QUANTITE ANZAHL	
222	9.1030.0020.4	8	M8 DIN 985-A2-2
223	9.1170.0277.2	1	"STANDEN HEFBOOM A-B-C-D"
224	9.1170.0052.1	1	"LET OP DRAAIENDE DELEN"
225	9.1170.0091.5	1	"ATTENTIE PTO INSCH. STAT."
226	9.1170.0069.4	1	"WERK VEILIG...ZIE INSTR."
227	2.3224.1494.0	6	
228	9.1113.0190*0	2	M12x70 DIN 931-8.8
229	9.1030.0023.0	4	M12 DIN 985-A2-2
230	9.1113.0191*1	2	M12x30 DIN 933-8.8
231	9.1170.0162.6	1	0°-15°
232	2.3219.1499.0	2	
233	2.3222.1486.0	1	Ø4x300
234	9.1147.0006.6	1	Nr. 50
235	2.3225.1496.0	1	[R]
	2.3225.1497.0	1	[L]





CENTERLINER	type number type number numéro de type Typnummer	vanaf serienummer as from serial number après numéro de serie ab Seriennummer
CB - S	2.3224.0001.1	1000 - 0501



A002-11-00

REF.	ONDERDEELNR. PART NUMBER REFERENCE TEILNUMMER	AANTAL QUANTITY QUANTITE ANZAHL
------	--	--

201	2.3225.0111.0	1
202	2.3217.1487.0	1
203	9.1030.0022.6	5
204	2.3219.1498.0	3
	2.3225.1492.0	1
		M10 DIN 985-A2-2
205	9.1070.0021.0	7
206	2.3225.0420.0	1
*	2.3225.0429.0	-
207	9.1137.0400.4	1
208	9.1137.0401.5	2
209	9.1137.0603.4	2
210	9.1137.0303.5	2
211	2.3201.2311.0	2
212	2.3225.0430.0	1
213	9.1123.0004*0	1
214	1.1804.0310.0	2
215	9.1123.0002*5	2
216	9.1113.0182*6	2
217	9.1048.0057*2	2
218	2.3225.0160.0	1
219	2.3224.0170.0	2
220	9.1058.0033*3	6
221	9.1048.0058*3	6
222	9.1030.0020.4	8

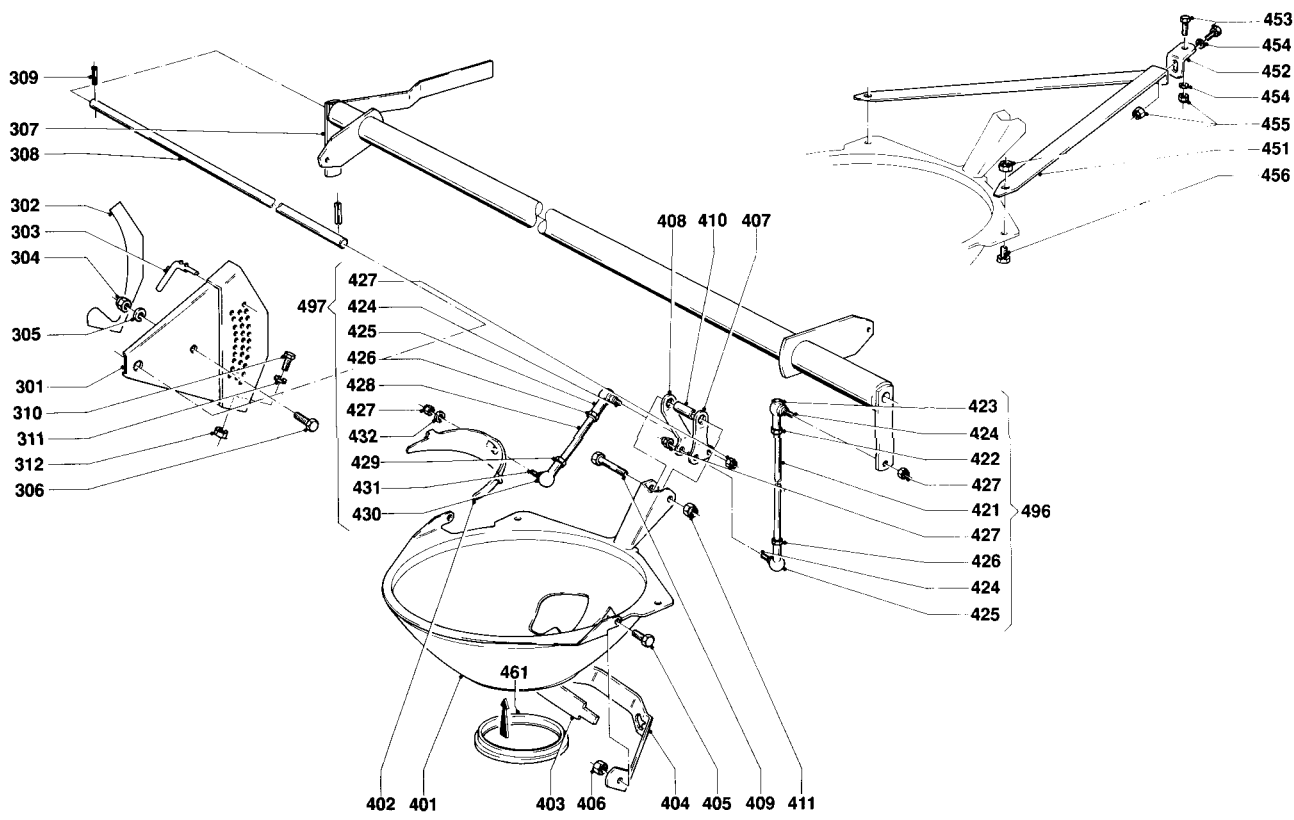
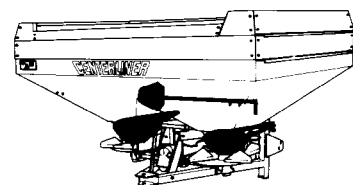
REF.	ONDERDEELNR. PART NUMBER REFERENCE TEILNUMMER	AANTAL QUANTITY QUANTITE ANZAHL
------	--	--

223	9.1170.0277.2	1
224	9.1170.0052.1	1
225	9.1170.0091.5	1
226	9.1170.0069.4	1
227	2.3224.1494.0	6
228	9.1113.0190*0	2
229	9.1030.0023.0	4
230	9.1113.0191*1	2
231	9.1170.0162.6	1
232	2.3219.1499.0	2
233	2.3222.1486.0	1
234	9.1147.0006.6	1
235	2.3225.1496.0	1
	2.3225.1497.0	1
236	9.1113.0183*0	4
237	9.1137.0302.4	2
238	9.1137.0402.6	2
239	9.1137.0605.6	1

"STANDEN HEFBOOM A-B-C-D"  
 "LET OP DRAAIENDE DELEN"  
 "ATTENTIE PTO INSCH. STAT."  
 "WERK VEILIG....ZIE INSTR."  
 M12x70 DIN 931-8.8  
 M12 DIN 985-A2-2  
 M12x30 DIN 933-8.8  
 0°-15°  
 Ø4x300  
 Nr. 50  
 [R]  
 [L]  
 M10x25 DIN 933-8.8  
 1/2" G  
 Ø22x29x1,5 Cu [ ]



CENTERLINER	type nummer type number numéro de type Typnummer	vanaf serienummer as from serial number après numéro de serie ab Seriennummer
CB - S	2.3224.0001.1	980 - 0501



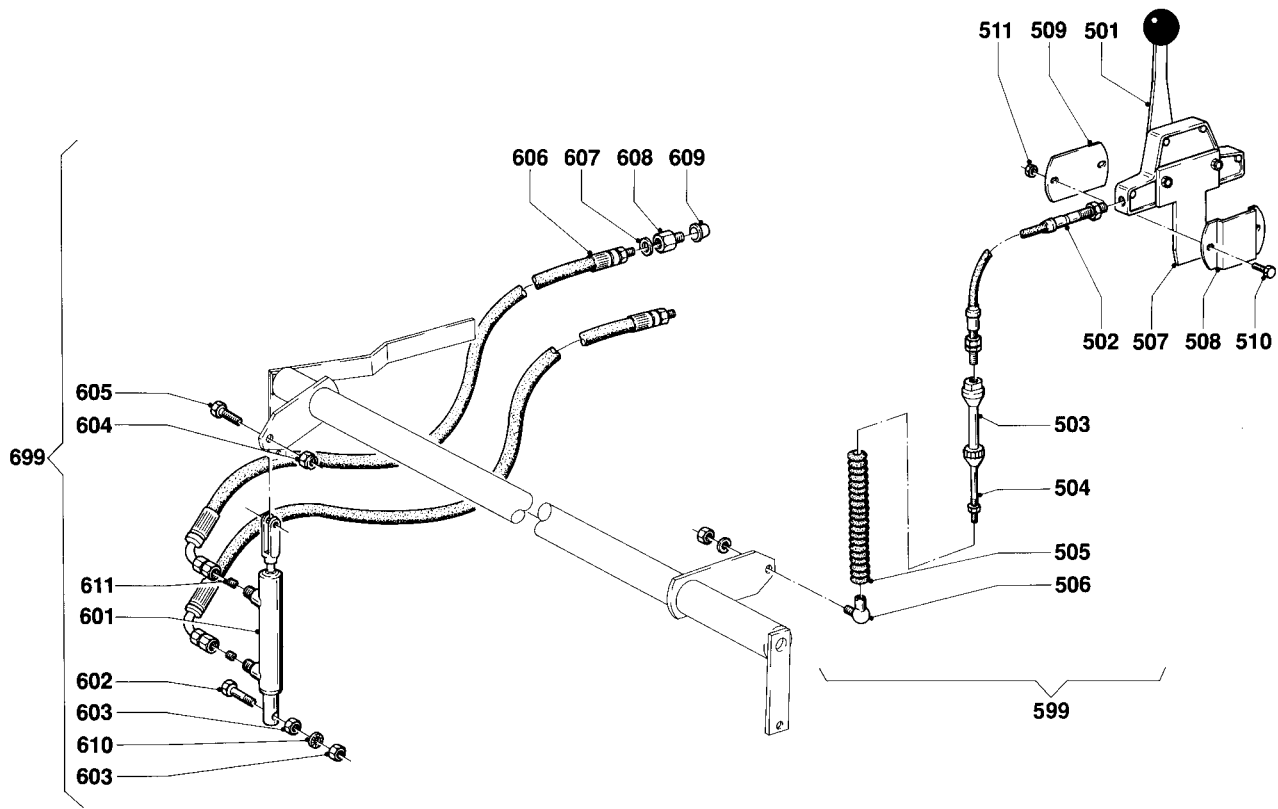
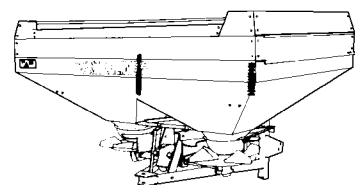
A042-02-01

REF.	ONDERDEELNR. PART NUMBER REFERENCE TEILNUMMER	AANTAL QUANTITY QUANTITE ANZAHL	
301	2.3217.0120.0	1	
302	9.1170.0132.4	1	"A-B-C"
303	2.3217.0250.0	1	Cpl.
304	9.1030.0022.6	1	M10 DIN 985-A2-2
305	9.1048.0059*4	1	A10,5 DIN 125 [ ]
306	9.1113.0183*0	1	M10x25 DIN 933-8.8
307	2.3218.0172.0	1	
308	2.3218.1499.0	1	
309	9.1070.0007.0	2	∅4x20 DIN 1481
310	9.1113.0195*5	1	M6x16 DIN 933-8.8
311	9.1049.0019.5	1	M6 Nylon [ / ]
312	9.1029.0026.4	1	M6 DIN 934-A2-2
401	2.3218.0110.0	1+1	[R]+[L]
402	2.3218.0144.0	1+1	
403	2.3218.0147.0	1+1	
404	2.3218.0145.0	1+1	
405	9.1113.0182*6	2+2	M8x25 DIN 933-8.8
406	9.1029.0029.0	2+2	M8 DIN 934-A2-2
407	2.3218.0148.0	1+1	[R]+[L]
408	2.3218.0149.0	1+1	
409	9.1113.0266.6	1+1	M8x65 DIN 931-A2-2
410	2.3218.0146.0	1+1	
411	9.1030.0020.4	1+1	M8 DIN 985-A2-2
421	2.3225.0443.0	1+1	M8/M8
422	9.1029.0029.0	1+1	M8 DIN 934-A2-2
423	9.1038.0013.3	1+1	M8-R
424	2.3225.0453.0	(2+1) 2x	M6-∅13

REF.	ONDERDEELNR. PART NUMBER REFERENCE TEILNUMMER	AANTAL QUANTITY QUANTITE ANZAHL	
425	9.1038.0014.4	(1+1) 2x	M8-L
426	9.1036.0027.5	(1+1) 2x	M8-L DIN 934
427	9.1030.0021.5	(2+2) 2x	M6 DIN 985-A2-2
428	2.3225.0444.0	1+1	M8/M6
429	9.1029.0026.4	1+1	M6 DIN 934-A2-2
430	9.1038.0009.6	1+1	M6-R
431	2.3225.0454.0	1+1	M6-∅10
432	9.1121.0019.3	1+1	A6 DIN 127 [ / ]
451	2.3224.0111.0	1	[R]
	2.3224.0131.0	1	[L][x]
452	2.3218.1492.0	2	
453	9.1113.0182*6	4	M8x25 DIN 933-8.8
454	9.1048.0057*2	4	A8,4 DIN 125 [ ]
455	9.1030.0020.4	8	M8 DIN 985-A2-2
456	9.1113.0186*3	4	M8x20 DIN 933-8.8
461	2.3218.0118.0	-	
496	2.3225.0443.1	2	= REF. 421-427 (2x M8)
497	2.3225.0444.1	2	= REF. 424-432 (L= 130 mm)
498	2.3225.0440.0	1	= REF. 401-432 [R]
499	2.3225.0470.0	1	= REF. 401-432 [L][x]



CENTERLINER	type number type number numéro de type Typnummer	vanaf serienummer as from serial number après numéro de serie ab Seriennummer
CB - S	2.3224.0001.1	980 - 0501



A037-01-00

REF.	ONDERDEELNR. PART NUMBER REFERENCE TEILNUMMER	AANTAL QUANTITY QUANTITE ANZAHL
------	--	--

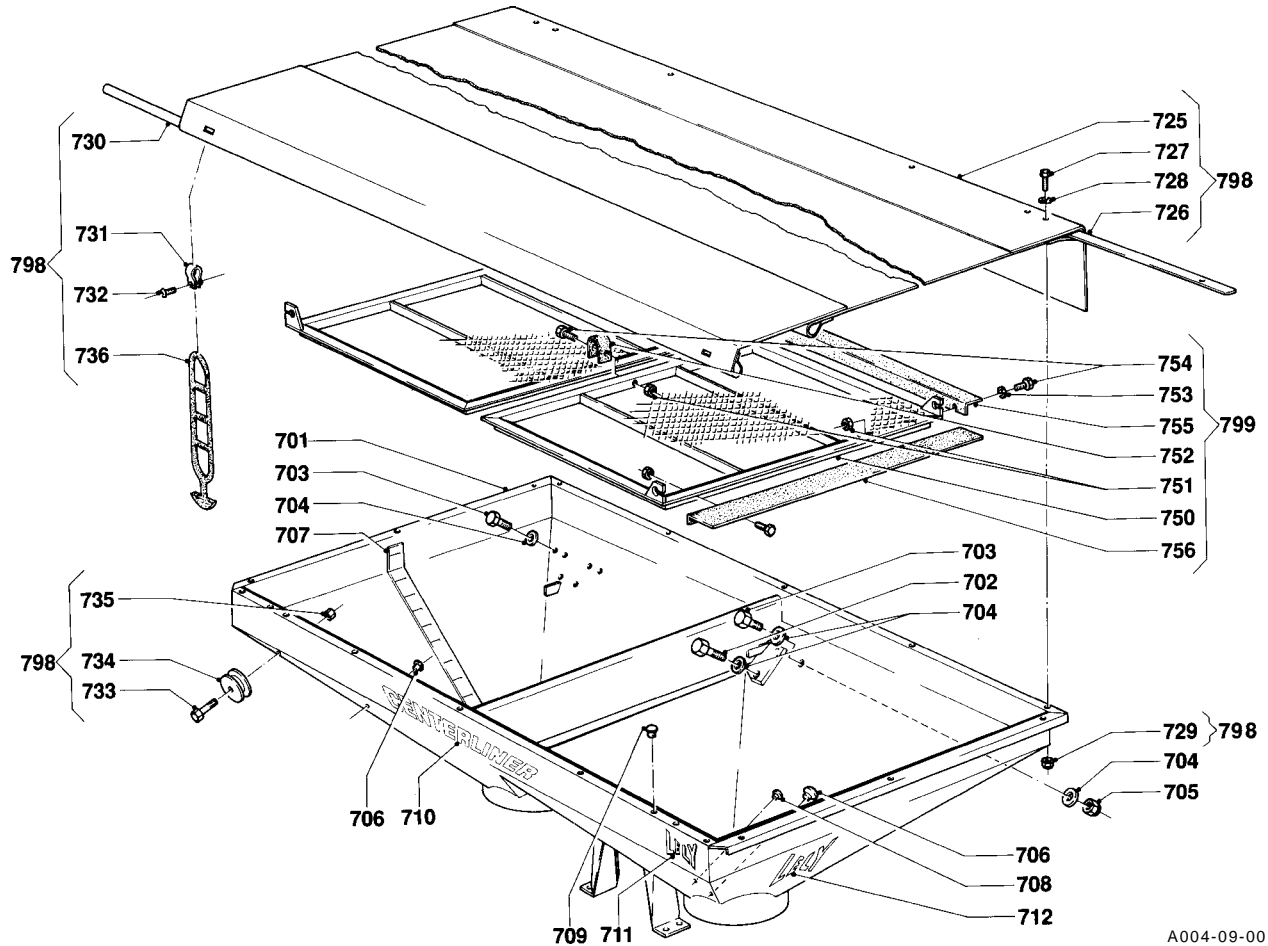
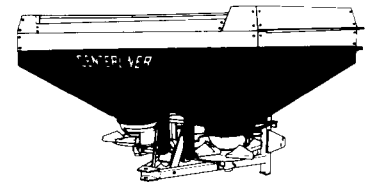
601	2.3218.2170.0	1	
602	9.1113.0216*5	1	M8x45 DIN 933-8.8
603	9.1029.0029.0	2	M8 DIN 934-A2-2
604	9.1030.0020.4	1	M8 DIN 985-A2-2
605	9.1113.0198*1	1	M8x30 DIN 933-8.8
606	2.3201.2311.0	2	L= 1810 mm
607	9.1137.0401.5	-	Ø14x20x1,5 Cu [ ]
608	9.1137.0606.0	-	3/8" - 1/4"
608	9.1137.0603.4	-	1/2" - 1/4"
609	9.1108.0030.6	-	
610	9.1051.0007.5	1	A8,4 DIN 6798 [ ]
611	2.3201.2400.0	2	M8x8 DIN 916-45H (Ø1,6)
699	2.3218.2102.0	1	= REF. 601-611

REF.	ONDERDEELNR. PART NUMBER REFERENCE TEILNUMMER	AANTAL QUANTITY QUANTITE ANZAHL
------	--	--

501	9.1180.0806.3	1	
502	9.1180.0804.1	1	
	9.1180.0811.1**	-	
503	9.1180.0803.0	1	
504	9.1180.0805.2	1	M6
	9.1180.0812.2**	-	M6
505	9.1180.0802.6	1	
506	9.1180.0801.5	1	M6
507	9.1180.0807.4	1	
508	2.3217.1497.0	1	
509	2.3217.1498.0	1	
510	9.1113.0127*0	2	M6x20 DIN 933-8.8
511	9.1030.0011*2	2	M6 DIN 985-8
599	9.1180.0800.4	1	= REF. 501-507 L= 2800 mm
599	9.1180.0810.0**	-	= REF. 501-507 L= 3800 mm
-	2.3217.0270.0	-	= REF. 501-511



CENTERLINER	type nummer type number numéro de type Typnummer	vanaf serienummer as from serial number après numéro de série ab Seriennummer
CB - S	2.3224.0001.1	980 - 0501



A004-09-00

REF.	ONDERDEELNR. PART NUMBER REFERENCE TEILNUMMER	AANTAL QUANTITY QUANTITE ANZAHL	
------	--	--	--

701	2.3219.0041.0	1	
702	9.1113.0189*6	4	M10x35 DIN 933-8.8
703	9.1113.0183*0	14	M10x25 DIN 933-8.8
704	9.1048.0059*4	36	A10,5 DIN 125 [ ]
705	9.1030.0022.6	18	M10 DIN 985-A2-2
706	9.1105.0006.6	2	Ø12
707	9.1170.0193.2	1	"CB 1600 / 800 L"
708	9.1105.0007.0	2	Ø7
709	9.1108.0063.5	20	Ø8
710	9.1170.0199.1	1	"CENTERLINER"

711	9.1170.0200.2	1	"LELY"
712	9.1170.0001.6	2	"LELY"

725	2.3219.2019.0	1	
726	2.3219.2018.0	2	
727	9.1113.0182*6	4	M8x25 DIN 933-8.8
728	9.1048.0058.3	4	A8,4 DIN 9021 [ ]
729	9.1030.0020.4	4	M8 DIN 985-A2-2

730	2.3219.2017.0	1	
731	4.1022.1485.0	2	
732	9.1059.0008.5	2	KB 4,0x18 (+) A2
733	9.1113.0184*1	2	M6x20 DIN 933
734	9.1141.0015.0	2	

735	9.1030.0021.5	2	M6 DIN 985-A2-2
736	9.1054.0006.1	2	Nr. 11, 28 cm
	9.1054.0007.2	2	Nr. 12, 38 cm

REF.	ONDERDEELNR. PART NUMBER REFERENCE TEILNUMMER	AANTAL QUANTITY QUANTITE ANZAHL	
------	--	--	--

750	2.3218.0241.0	1+1	
751	9.1029.0027.5	21+21	M6 DIN 934-6.6 Nylon
752	2.3218.0269.0	1+1	
753	9.1048.0049.1	21+21	A6,4 DIN 9021-6.6 Nyl. [ ]
754	9.1113.0166.4	21+21	M6x16 DIN 933-6.6 Nylon

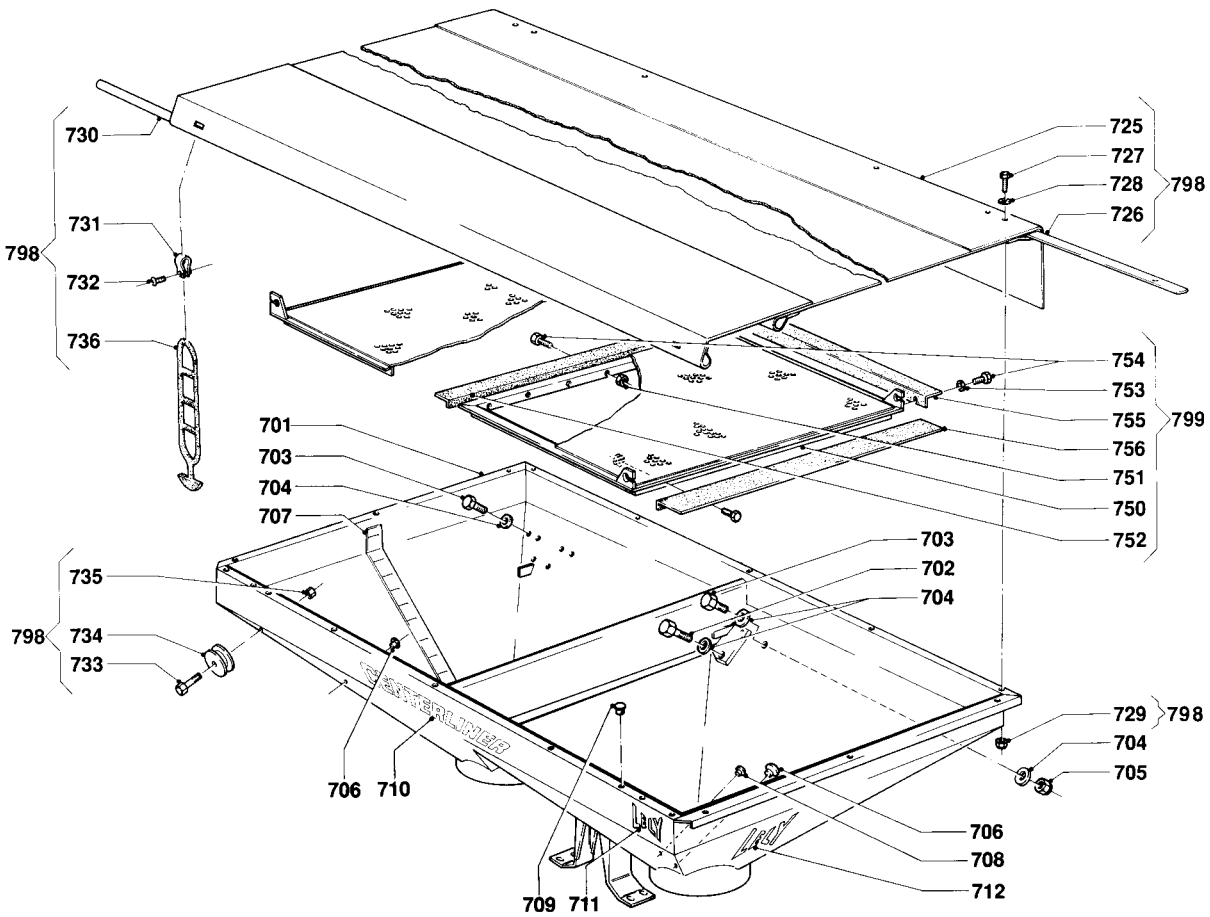
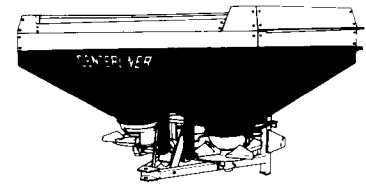
755	2.3220.0119.0	2+2	
756	2.3220.0118.0	1+1	

798	2.3219.2011.0	1	= REF. 725-736
-----	---------------	---	----------------

799	2.3218.0231.0	2	= REF. 750-756
-----	---------------	---	----------------



CENTERLINER	type nummer type number numéro de type Typnummer	vanaf serienummer as from serial number après numéro de série ab Seriennummer
CB - S	2.3224.0001.1	988 - 0920



A045-01-00

REF.	ONDERDEELNR. PART NUMBER REFERENCE TEILNUMMER	AANTAL QUANTITY QUANTITE ANZAHL	
------	--	--	--

701	2.3225.0140.0	1	
702	9.1113.0189*6	4	M10x35 DIN 933-8.8
703	9.1113.0183*0	14	M10x25 DIN 933-8.8
704	9.1048.0059*4	36	A10,5 DIN 125 [ ]
705	9.1030.0022.6	18	M10 DIN 985-A2-2

706	9.1105.0006.6	2	Ø12
707	9.1170.0193.2	2	"CB 1600 / 800 L"
708	9.1105.0007.0	2	Ø7
709	9.1108.0063.5	20	Ø8
710	9.1170.0199.1	1	"CENTERLINER"

711	9.1170.0200.2	1	"LELY"
712	9.1170.0001.6	2	"LELY"

725	2.3219.2019.0	1	
726	2.3219.2018.0	2	
727	9.1113.0182*6	4	M8x25 DIN 933-8.8
728	9.1048.0005*6	4	A8,4 DIN 9021 [ ]
729	9.1030.0020.4	4	M8 DIN 985-A2-2

730	2.3219.2017.0	1	
731	4.1022.1485.0	2	
732	9.1059.0008.5	2	KB 4,0x18 (+) A2
733	9.1113.0184*1	2	M6x20 DIN 933
734	9.1141.0015.0	2	

735	9.1030.0021.5	2	M6 DIN 985-A2-2
736	9.1054.0006.1	2	Nr. 11, 28 cm
	9.1054.0007.2	2	Nr. 12, 38 cm

REF.	ONDERDEELNR. PART NUMBER REFERENCE TEILNUMMER	AANTAL QUANTITY QUANTITE ANZAHL	
------	--	--	--

750	2.3220.0100.0	1+1	
751	9.1029.0027.5	28+28	M6 DIN 934-6.6 Nylon
752	2.3220.0117.0	1+1	
753	9.1048.0049.1	28+28	A6,4 DIN 9021-6.6 Nyl. [ ]
754	9.1113.0166.4	28+28	M6x16 DIN 933-6.6 Nylon

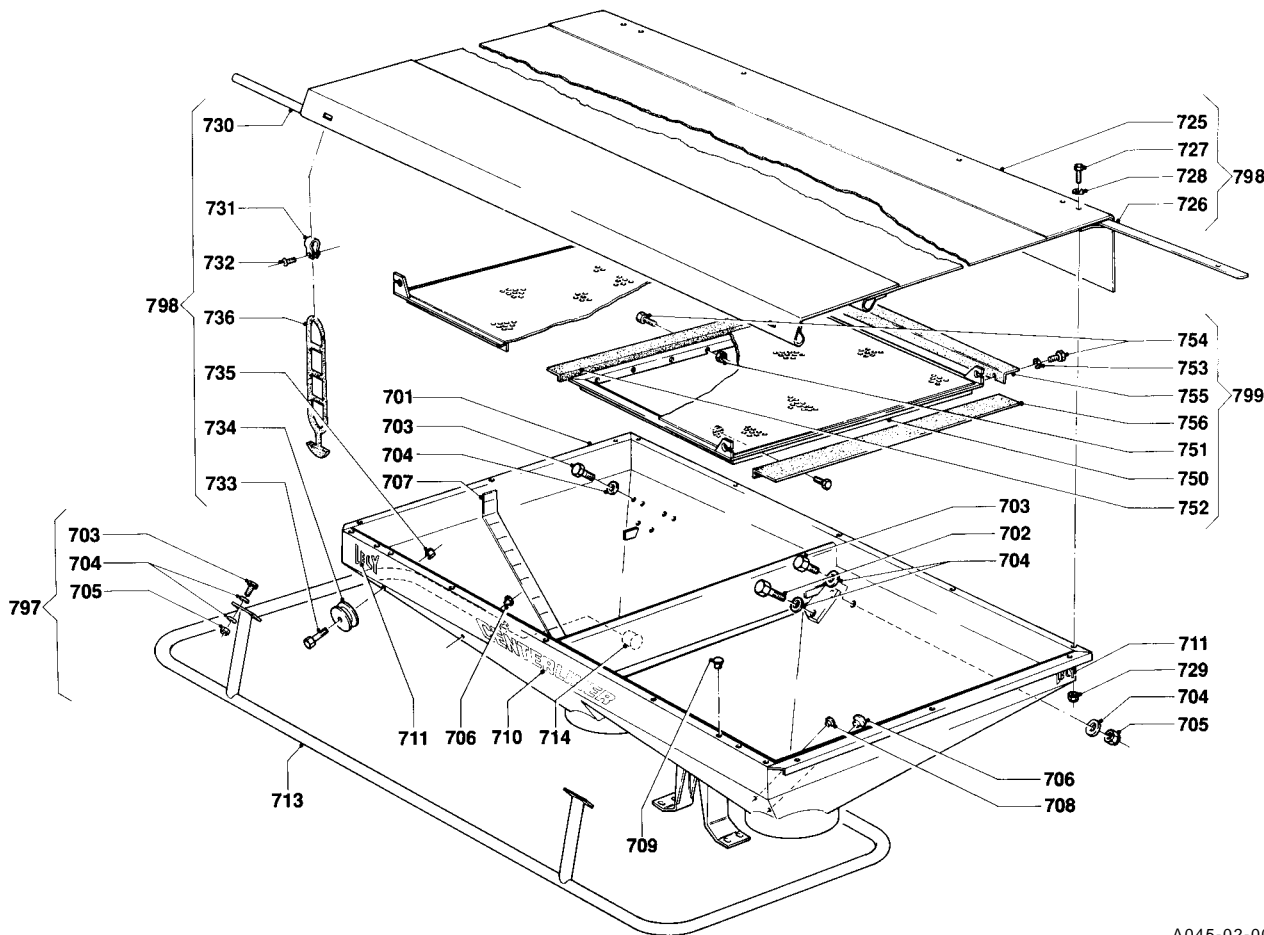
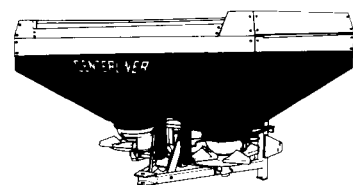
755	2.3220.0119.0	2+2	
756	2.3220.0118.0	1+1	

798	2.3219.2011.0	1	= REF. 725-736
-----	---------------	---	----------------

799	2.3220.0090.0	2	= REF. 750-756
-----	---------------	---	----------------



CENTERLINER	type nummer type number numéro de type Typnummer	vanaf serienummer as from serial number après numéro de série ab Seriennummer
CB - S	2.3224.0001.1	1007 - 0905



A045-02-00

REF.	ONDERDEELNR. PART NUMBER REFERENCE TEILNUMMER	AANTAL QUANTITY QUANTITE ANZAHL
------	--	--

701	2.3225.0140.0	1
702	9.1113.0189*6	8
703	9.1113.0183*0	14
704	9.1048.0059*4	44
705	9.1030.0022.6	22
706	9.1105.0006.6	4
707	9.1170.0193.2	2
708	9.1105.0007.0	2
709	9.1108.0063.5	20
710	9.1170.0199.1	1
711	9.1170.0200.2	3
713	2.3225.0750.0	1
714	9.1108.0059.1	2
725	2.3219.2019.0	1
726	2.3219.2018.0	2
727	9.1113.0182*6	4
728	9.1048.0005*6	4
729	9.1030.0020.4	4
730	2.3219.2017.0	1
731	4.1022.1485.0	2
732	9.1059.0008.5	2
733	9.1113.0184*1	2
734	9.1141.0015.0	2
735	9.1030.0021.5	2
736	9.1054.0006.1	2
	9.1054.0007.2	2

REF.	ONDERDEELNR. PART NUMBER REFERENCE TEILNUMMER	AANTAL QUANTITY QUANTITE ANZAHL
------	--	--

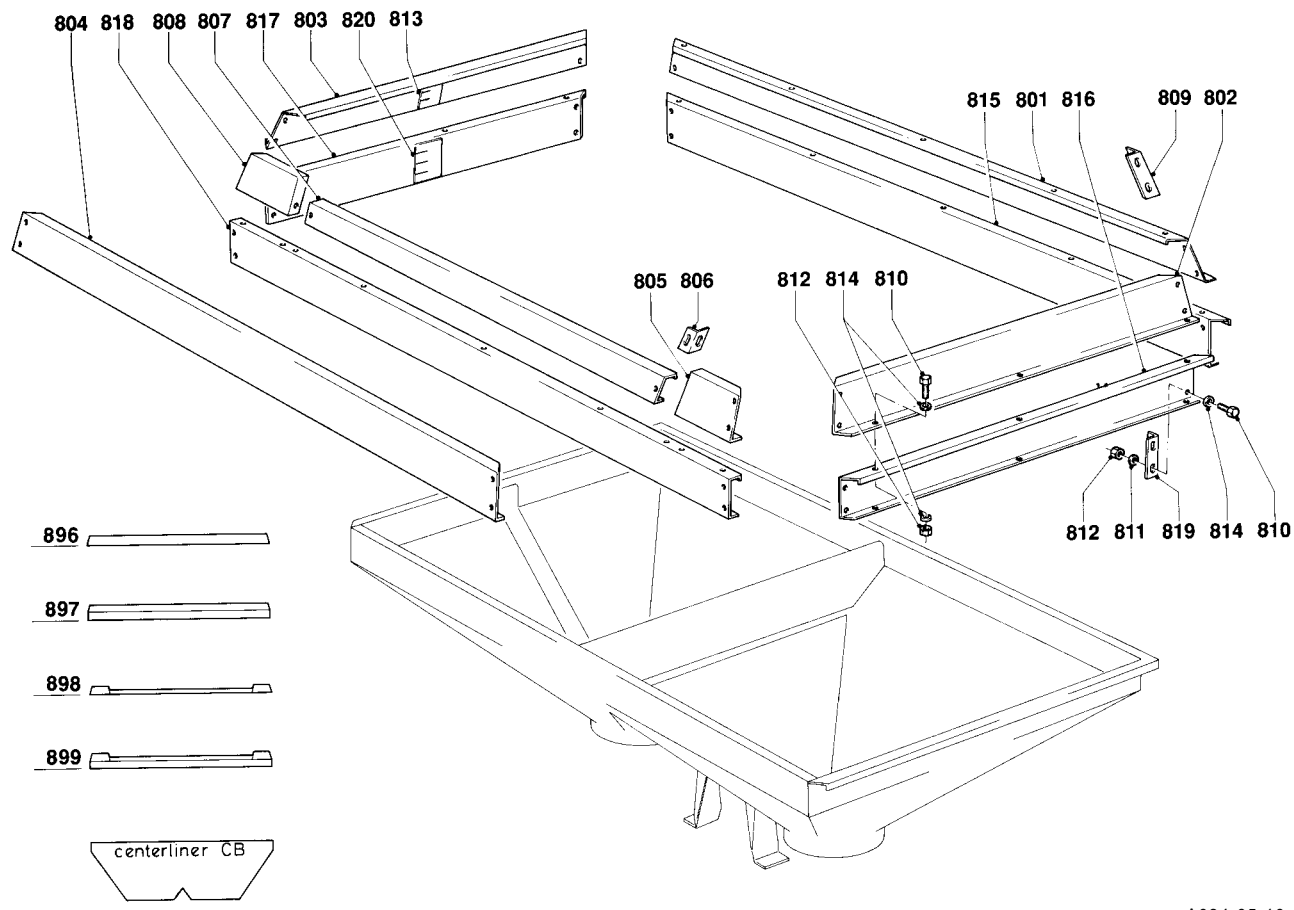
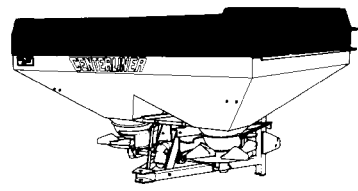
750	2.3220.0100.0	1+1
751	9.1029.0027.5	28+28
752	2.3220.0117.0	1+1
753	9.1048.0049.1	28+28
754	9.1113.0166.4	28+28
755	2.3220.0119.0	2+2
756	2.3220.0118.0	1+1
797	2.3225.0740.0	1
798	2.3219.2011.0	1
799	2.3220.0090.0	2

M6 DIN 934-6.6 Nylon  
A6,4 DIN 9021-6.6 Nyl. [ ]  
M6x16 DIN 933-6.6 Nylon

= REF. 713-714 +(703/4/5)  
= REF. 725-736  
= REF. 750-756



CENTERLINER	type number type number numéro de type Typnummer	vanaf serienummer as from serial number après numéro de serie ab Seriennummer
CB - S	2.3224.0001.1	980 - 0501



A034-05-10

REF.	ONDERDEELNR. PART NUMBER REFERENCE TEILNUMMER	AANTAL QUANTITY QUANTITE ANZAHL
------	--	--

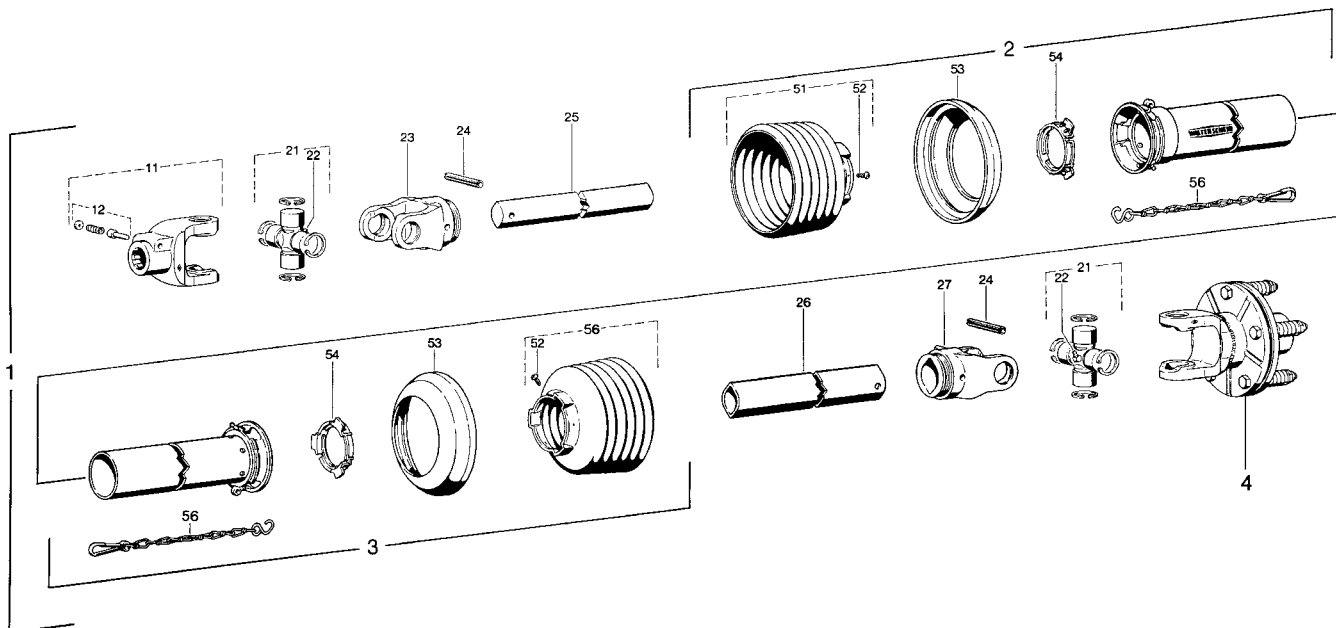
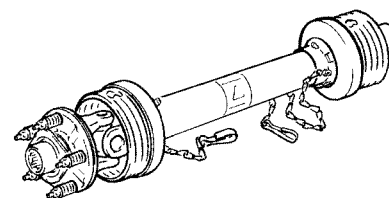
REF.	ONDERDEELNR. PART NUMBER REFERENCE TEILNUMMER	AANTAL QUANTITY QUANTITE ANZAHL	
	896 897 898 899		
801	2.3219.2036.0	1 1 1 1	
802	2.3219.2039.0	1 1 1 1	[R]
803	2.3219.2038.0	1 1 1 1	[L]
804	2.3219.2037.0	1 1 - -	
805	2.3219.2079.0	- - 1 1	
806	2.3219.2075.0	- - 1 1	[R]
	2.3219.2076.0	- - 1 1	[L][x]
807	2.3219.2077.0	- - 1 1	
808	2.3219.2078.0	- - 1 1	
809	2.3219.2035.0	4 4 4 4	
810	9.1113.0186*3	32 64 40 72	M8x20 DIN 933-8.8
811	9.1048.0058*3	16 32 20 36	A8,4 DIN 9021
812	9.1030.0020.4	32 64 40 72	M8 DIN 985-A2-2
813	9.1170.0196.5	2 2 2 2	"CB 2400"
814	9.1048.0072.3	48 96 60 108	A8,4 DIN 125 6.6 Nylon
815	2.3219.2056.0	- 1 - 1	
816	2.3219.2059.0	- 1 - 1	[R]
817	2.3219.2058.0	- 1 - 1	[L]
818	2.3219.2057.0	- 1 - 1	
819	2.3219.2055.0	- 4 - 4	
820	9.1170.0197.6	- 2 - 2	"CB 3000"

REF.	ONDERDEELNR. PART NUMBER REFERENCE TEILNUMMER	AANTAL QUANTITY QUANTITE ANZAHL
------	--	--

896	2.3219.2020.0	1 - - -	= REF. 801-804 CB 2400 + REF. 809-814
897	2.3219.2040.0	- 1 - -	= REF. 801-804 CB 3000 +REF. 809-820
898	2.3219.2060.0	- - 1 -	= REF. 801-803 CB 2400 +REF. 805-814
899	2.3219.2080.0	- - - 1	= REF. 801-803 CB 3000 +REF. 805-820



CENTERLINER	type number type number numéro de type Typnummer	vanaf serienummer as from serial number après numéro de serie ab Seriennummer
CB - S	2.3224.0001.1	980 - 0501



Aw001-04-01

REF.	ONDERDEELNR. PART NUMBER REFERENCE TEILNUMMER	AANTAL QUANTITY QUANTITE ANZAHL	
------	--	--	--

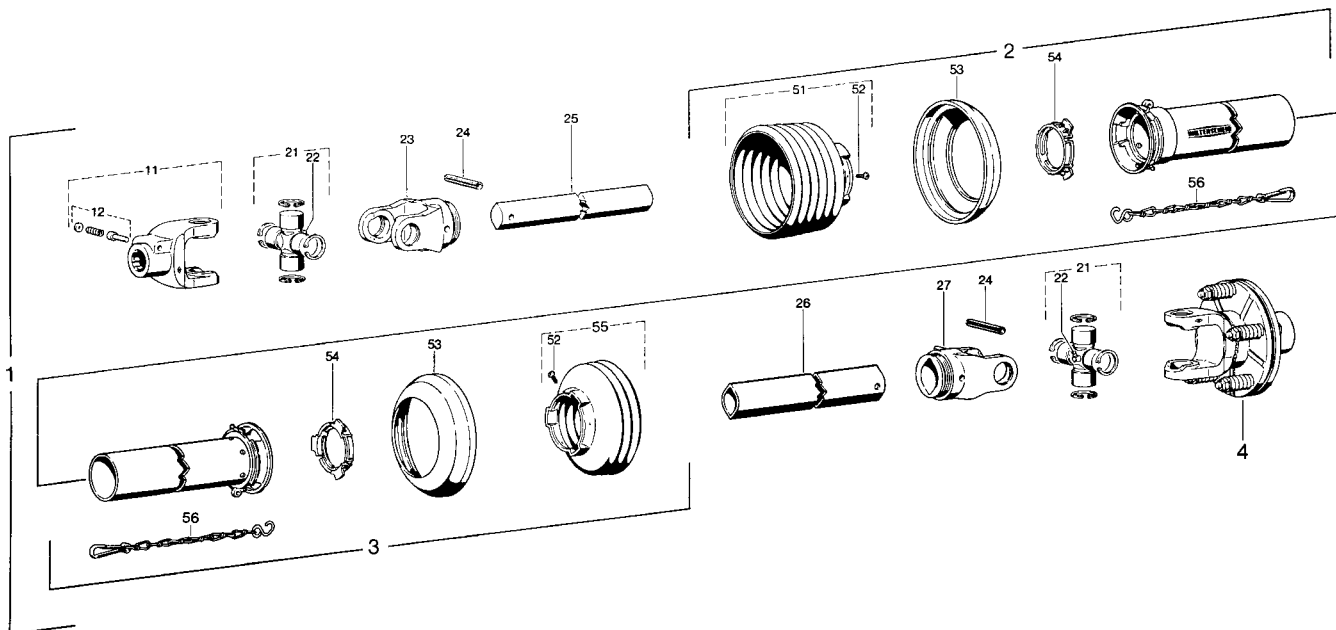
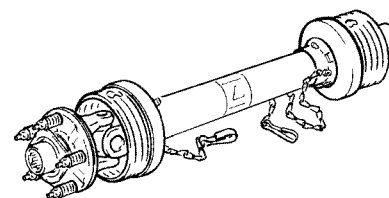
1	9.1154.0075.5	1	W2100-SD05-860mm-K94 = REF. 2-56
2	85.005	1	SDH 05 L= 705 mm
3	85.004	1	SDH 05 L= 700 mm
4	56.101.19	1	K94/1-400Nm
11	10.10.00	1	1.3/8" (6)
12	33.91.07	1	AGRASET 101
21	10.01.00	2	
22	63.27.00	2	M8x1
23	10.48.00	1	RG2100-00a
24	61.04.01	2	Ø8x50 DIN1481
25	75.06.15	1	00a L= 760 mm
26	75.12.15	1	0a L= 755 mm
27	10.49.00	1	RG 2100-0a
51	85.05.05	1	
52	60.15.00	2	4x10
53	83.10.03	2	
54	83.09.01	2	
55	82.36.03	2	
56	85.05.04	1	

REF.	ONDERDEELNR. PART NUMBER REFERENCE TEILNUMMER	AANTAL QUANTITY QUANTITE ANZAHL	
------	--	--	--





CENTERLINER	type number type number numéro de type Typnummer	vanaf serienummer as from serial number après numéro de serie ab Seriennummer
CB - S	2.3224.0001.1	988 - 0920



Aw001-05-01

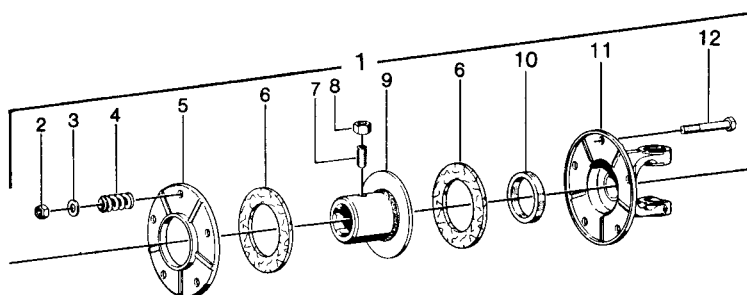
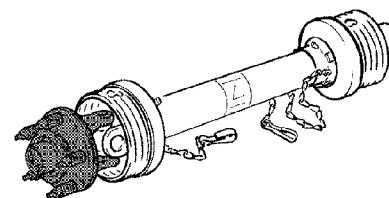
REF.	ONDERDEELNR. PART NUMBER REFERENCE TEILNUMMER	AANTAL QUANTITY QUANTITE ANZAHL	
------	--	--	--

1	9.1154.0152.5	1	W2100-SD05-860mm-K94/1 = REF. 2-56
2	85.005	1	SDH 05 L= 705 mm
3	85.004	1	SDH 05 L= 700 mm
4	56.110.19	1	K94/1-1.1/8" (6)-400Nm
11	10.10.00	1	1.3/8" (6)
12	33.91.07	1	AGRASET 101
21	10.01.00	2	
22	63.27.00	2	M8x1
23	10.48.00	1	RG2100-00a
24	61.04.01	2	Ø8x50 DIN1481
25	75.06.15	1	00a L= 760 mm
26	75.12.15	1	0a L= 755 mm
27	10.49.00	1	RG 2100-0a
51	85.05.05	1	
52	60.15.00	2	4x10
53	83.10.03	2	
54	83.09.01	2	
55	85.05.03	1	
56	82.36.03	2	

REF.	ONDERDEELNR. PART NUMBER REFERENCE TEILNUMMER	AANTAL QUANTITY QUANTITE ANZAHL	
------	--	--	--



CENTERLINER	type number type number numéro de type Typnummer	vanaf serienummer as from serial number après numéro de serie ab Seriennummer
CB - S	2.3224.0001.1	980 - 0501



Aw002-02-00

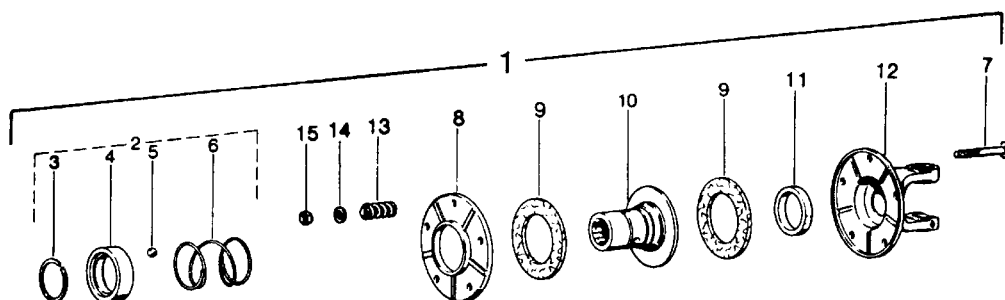
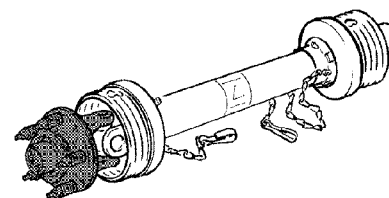
REF.	ONDERDEELNR. PART NUMBER REFERENCE TEILNUMMER	AANTAL QUANTITY QUANTITE ANZAHL	
------	--	--	--

1	56.101.19	1	K94/1-2100 1.1/8" (6); M= 400Nm. = REF. 2-12
2	9.1030.0012*3	5	M8 DIN 985
3	9.1048.0004*5	5	B8.4 DIN 125 [—]
4	66.01.47	5	
5	16.20.69	1	
6	56.73.07	2	
7	60.05.48	1	M10x25 DIN 913
8	60.52.00	1	M10 DIN 934
9	16.50.413	1	1.1/8" (6)
10	16.52.05	1	
11	10.34.121	1	
12	9.1113.0175*6	5	M8x60 DIN 931

REF.	ONDERDEELNR. PART NUMBER REFERENCE TEILNUMMER	AANTAL QUANTITY QUANTITE ANZAHL	
------	--	--	--



CENTERLINER	type number type number numéro de type Typnummer	vanaf serienummer as from serial number après numéro de serie ab Seriennummer
CB - S	2.3224.0001.1	988 - 0520



Aw002-03-00

REF.	ONDERDEELNR. PART NUMBER REFERENCE TEILNUMMER	AANTAL QUANTITY QUANTITE ANZAHL	
------	--	--	--

1	56.110.19	1	K94/1-2100 1.1/8" (6); 400Nm. = REF. 3-15
2	193658	1	AGRASET 140 = REF. 3-6
3	168639	1	SW43
4	16.50.493	1	1.1/8"
5	64.01.00	3	3/8" V DIN 5401
6	66.01.55	1	
7	9.1113.0175*6	5	M8x60 DIN 931
8	16.20.69	1	
9	56.73.13	2	56x90x4,5
10	16.50.494	1	K94/1-1.1/8" (6)
11	16.52.05	1	43x53x9
12	10.34.121	1	K94/1-2100
13	66.01.47	5	
14	9.1048.0004*5	5	B8.4 DIN 125 [—]
15	9.1030.0012*3	5	M8 DIN 985

REF.	ONDERDEELNR. PART NUMBER REFERENCE TEILNUMMER	AANTAL QUANTITY QUANTITE ANZAHL	
------	--	--	--